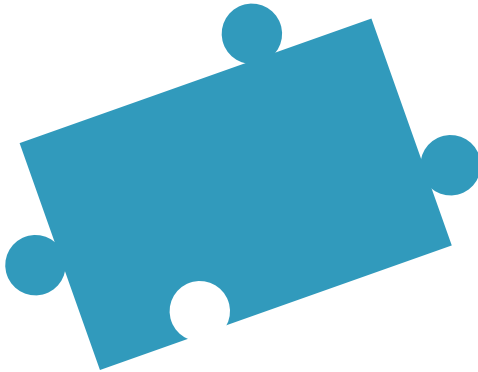




THE
CENTER
FOR
WOMEN
AND
FAMILIES

PO Box 2048
Louisville, KY 40201-2048



LETTER FROM THE CEO

The Center has seen a lot of changes over the last year. We said farewell to some cherished friends and colleagues and welcomed great new talent. Throughout these transitions we have continued, without hesitation, to respond to the needs of survivors of intimate partner or sexual violence and their families.

The community's needs are great. We have seen both increased demand in sexual assault services in the era of #MeToo and the number of clients incoming from lethality assessments. Tragically, this past year domestic violence homicide was also on the rise.

As a new era dawns at The Center, we will continue serving individuals in our community and take the opportunity to bring a fresh perspective, refine our work and focus on improved quality and sustainability. Continually we strive to discover new ways of addressing issues that arise in an ever-changing environment.

Elizabeth Wessels-Martin

MISSION

The Center for Women and Families helps victims of intimate partner abuse or sexual violence to become survivors through supportive services, community education and cooperative partnerships that foster hope, promote self-sufficiency and rebuild lives

BOARD OF DIRECTORS

Chair

Dana Lackey, *Old National Bank*

Vice Chair

Leslie Coyle, *Hilliard Lyons*

Treasurer

Kristin McDonner, *Crowe Horwath*

Secretary

Stephanie Smith, *Unistar LLC*

Directors

Carol Alvarez, *Brown-Forman Representative*

Mary Bacon, *Community Volunteer*

Richard Banta Jr., *ERDCO Properties*

Connie Barker, RN MSN, *Baptist Health*

Heather Bass Ph.D., *East End Psychological Associates*

Anne Bauer, *Republic Bank & Trust*

Annie Bender, *Homepage Realty*

Nancy Bottoms, *UPS*

Shannon Charnas, *LG&E KU*

Christopher Colson, *Texas Roadhouse*

Steve Conrad, *Louisville Metro Police Chief*

Dana Eberle-Peay, *McNeely Stephenson*

Eric Goodman, *Community Volunteer*

Maria Hughes, *Humana*

Pam Missi, *Norton Women and Children's*

David Nicholson, *Jefferson Co. Circuit Court Clerk*

Diane French Nguyen, *Brown-Forman*

Casey Ramage, *EdjAnalytics*

Shelley Santry, *University of Louisville*

Kristin Warfield, *Churchill Downs*

Robert Webb, *Frost, Brown, Todd Attorneys*

Jill Whitehouse, *Multipurpose Community Action Agency*

2018 Report To The Community

Intimate partner violence and sexual violence are complicated issues. Those who are affected by interpersonal violence need support and care that is tailored to their individual needs. At The Center we work with individuals to determine the path that best fits their situation and goals. Much like the complexity of a puzzle, we help individuals slowly put the pieces back together.

The Center could not provide 100% free services 24/7 365 days a year without volunteers, donors and community partners. Support like yours is a vital component of The Center. Survivors wouldn't be able to continue their journey without your piece providing critical support!

68 Volunteers

3,347
Volunteer Hours

1,619 Individual
Donors



9,703

Crisis + Information Line Calls

4,688

Individual Safety Plans

1,834

Individuals met with Court Advocates

927

Hospital Advocacy Runs



Sheltered

748

People

471 Adults

277 Children

Held a total of

89 Professional Trainings

with
2,028 Attendees



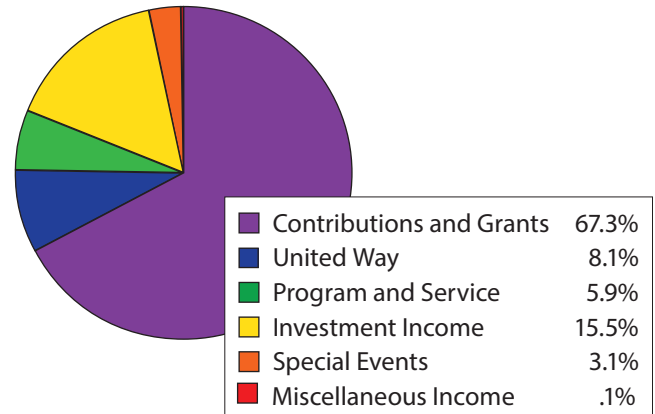
2018 REPORT TO THE COMMUNITY

Financial Report July 1, 2017 through June 30, 2018

FINANCIALS

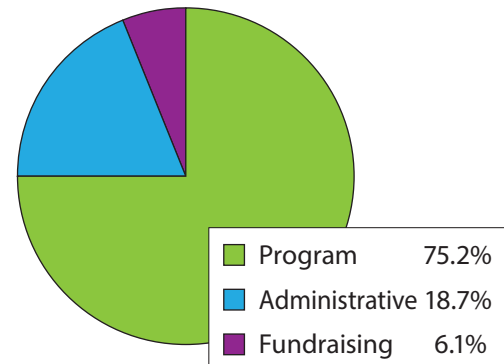
Revenues

Contributions and Grants	3,733,498
United Way	450,043
Program and Service Fees	326,778
Investment Income	857,497
Special Events (net)	170,192
Miscellaneous Income	8,597



Expenses

Program Expenses	4,315,445
Administrative Expenses	1,069,574
Fundraising Expenses	349,473



2018 Balance Sheet Summarized

Assets	20,408,665
Liabilities	2,589,030
Net Assets	17,819,635

Program and Services Cost Estimates

\$5 Cost of providing meals for one person in emergency shelter for a day.

\$35 Cost of providing meals for a person in emergency shelter for a week.

\$54 Cost of providing a room for a night for a person seeking emergency treatment.

\$94 Cost of providing an hour art therapy for a client.

\$137 Cost of one hour of crisis response.

Please note that costs are an approximate estimate and may fluctuate based on economic trends and realities (i.e. increased cost of food, benefits, etc).