

The Center for Women and Families

Annual Report 2002-2003

Our tasks are clearly defined.

This child

The Center for Women and Families boldly addresses the effects of domestic violence on children. In fact, children represent our largest constituency. The Center, in partnership with the Home of the Innocents and the University of Louisville, recently completed an eighteen-month study assessing the impact of domestic violence on children who witness it. At the same time, The Center launched a comprehensive and effective public awareness campaign targeting the effects of domestic violence on children. Its message was clear. "Domestic Violence: These two words don't belong together."

This year The Center has broadened the scope of our Children's Services to include crisis counseling, safety planning, group support, non-residential groups, and education. We partner with local agencies to bring children to the forefront of service.



has witnessed more violence
than most adults.



She wants to call

but doesn't know

we speak her language.


Women and children comprise almost two-thirds of all legal immigrants. Often disconnected from friends and family in their country of origin, battered immigrant women are even more isolated in violent relationships. More than eighty-percent of battered immigrants do not contact the police for help because abusive partners have used threats of deportation to gain power and control. These women have been told no one will speak their language.

The Center for Women and Families serves all languages through interpreters, language lines, and bilingual staff. Spanish-speaking counselors implement outreach educational programming every week and are available on our crisis line 24-hours a day. Our immigration attorney helps women apply for their permanent residency independent of their abuser. The Center's family advocates nurture relationships with community organizations facilitating effective referrals to resources tailored toward immigrant and refugee success. We are working to ensure every cry for help is heard.

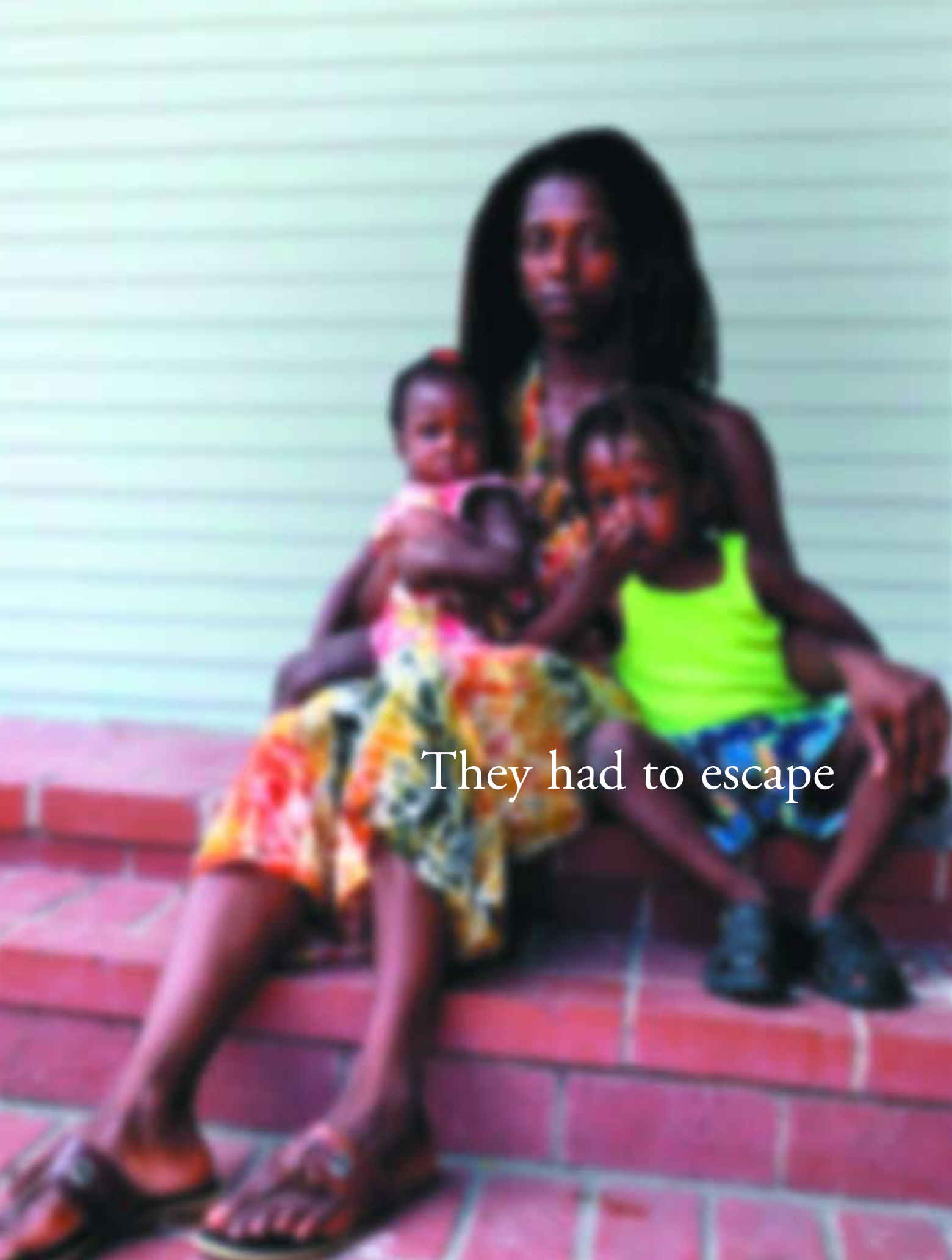
This woman is being controlled

Building a positive work history is particularly difficult for victims of domestic violence. Since 1975, The Center's Economic Success Program's Creative Employment staff has helped women restore their professional lives by addressing the many barriers they face when entering or re-entering the workforce. This year, with support from the US Department of Labor, The Center was able to expand our job training, readiness and post employment support program into a national model. Recognized as a best practice by the Kentucky Domestic Violence Association, our Economic Literacy Outreach and Commonwealth IDA Programs are helping clients realize economic stability and financial self-sufficiency in record numbers.

When victims of domestic violence leave an abusive relationship, they often leave behind their home, car, savings account, and personal possessions. Building on the first steps of economic independence, The Center for Women and Families has created unique programming to move families toward economic success. The Center's leadership role as the coordinating body of the Louisville Asset Building Coalition helps connect our clients to a collaborative community partnership with over 60 organizations to create greater economic impact in our community for the families we serve.



by her finances.



They had to escape

In the 1970's The Center for Women and Families was the first agency in the Commonwealth to provide shelter and safe refuge for women and families fleeing violence in their homes. Today, families from fourteen counties in Kentucky and Indiana seek comfort in our emergency shelters.

Over sixty-percent of homeless women and children are homeless as a result of domestic violence. Victims' vulnerability for homelessness increases if they lack social and financial support, employment, and education. The Center responds to the unique characteristics of homeless women and children victimized by violence and creates a safety net for them by providing counseling, support groups, employment and financial services, and legal advocacy. Center staff helps clients find affordable housing and transition their lives from crisis to stability.

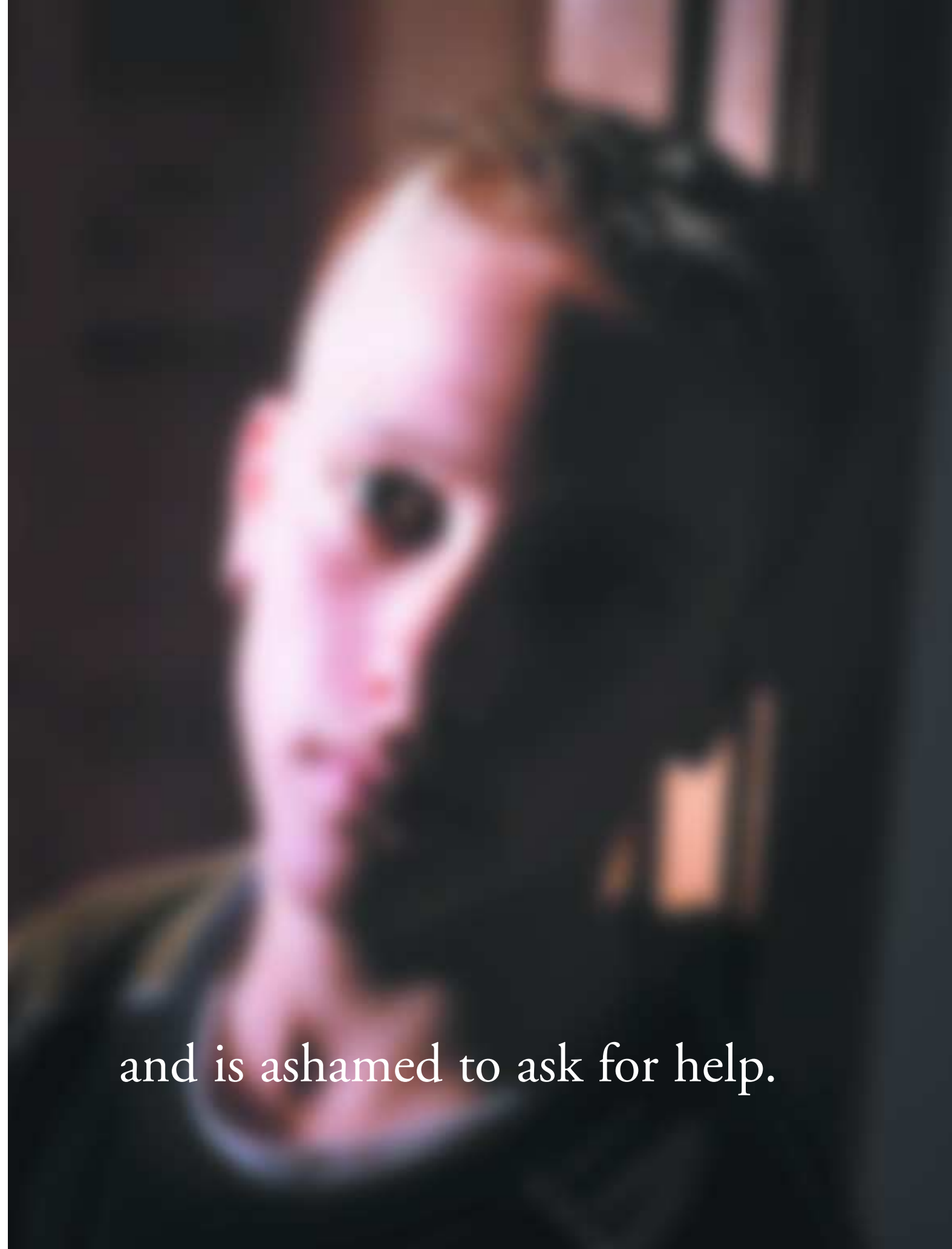
but have nowhere to live.

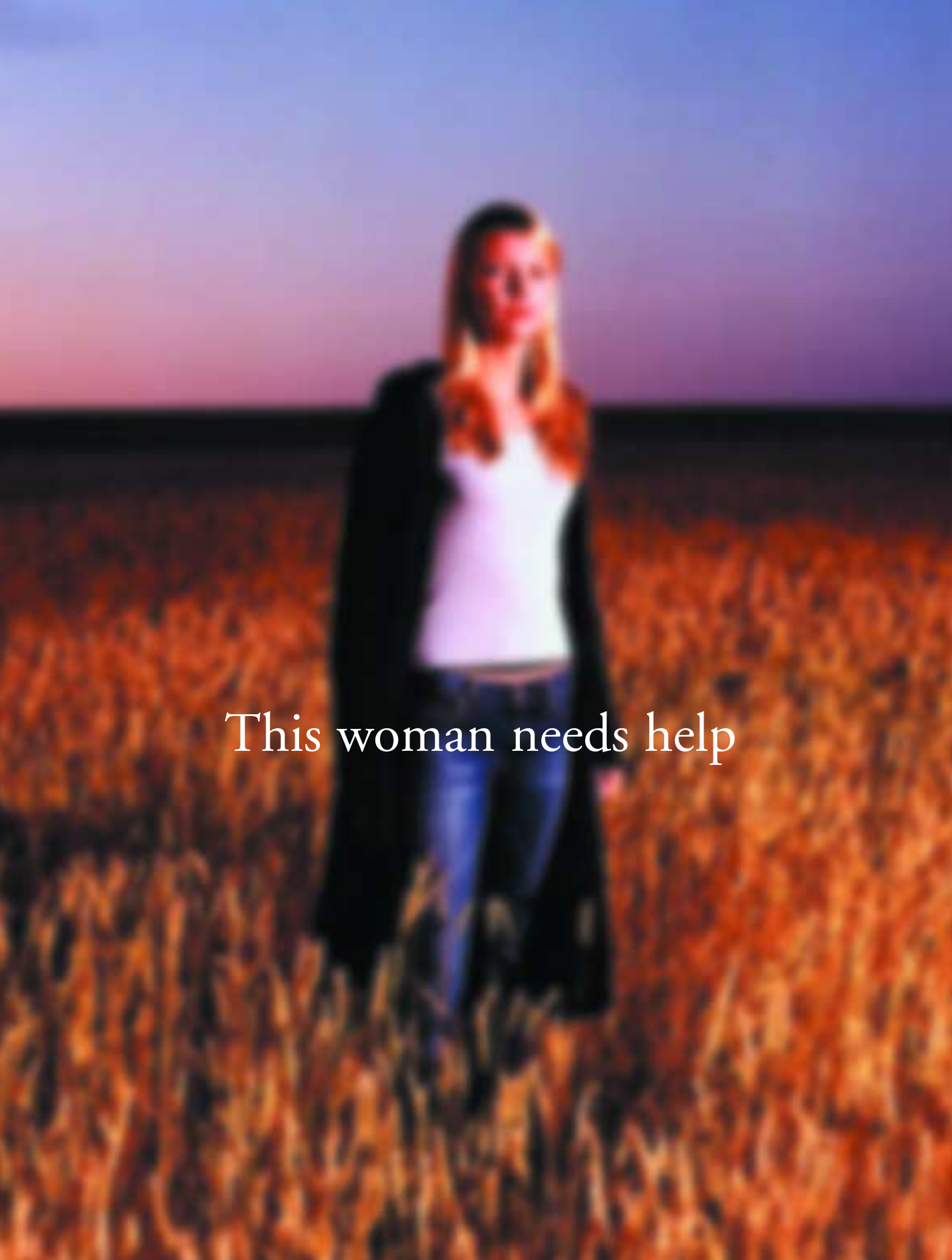
The Center offers services for all victims of sexual violence and their families and friends. Our specially trained hospital advocates meet victims at the hospital and offer information, referrals, and compassion in a time of trauma.

Survivors are empowered through healing opportunities like support groups, art therapy, and individual work with our staff. Our staff educators go into schools and youth organizations to give young people information on sexual assault prevention. We educate medical professionals, law enforcement officers, businesses, and civic groups about these tough issues so that victims get the support and services they need to heal and move forward with their lives. Whether the assault happened yesterday or ten years ago, The Center for Women and Families is here to serve and advocate.

This teenager was raped

and is ashamed to ask for help.





This woman needs help

but is miles

and miles away.

Victims of domestic violence in rural areas face special barriers. They must often overcome isolation, poverty, lack of transportation, shortages of health care providers, and decreased access to resources they need to live a life free from violence. The Center, in conjunction with the Oldham county Sheriff's Department, opened the Oldham County Domestic Violence and Advocacy Program in January 2003. This is our first 24-hour presence in Oldham County. Center services continue to grow in Indiana, too. This year marks our twentieth year of service in Floyd County, tenth year in Scott County, and fifth year in Harrison and Crawford Counties.

The Center operates a 24-hour toll-free crisis line and a website that are easily accessed by rural victims of domestic violence and sexual assault.



**A message from
Lynn Meyer, President
of The Center and
Diane Everse, Chair,
Board of Directors.**

July 2002

Center announces the completion of an 18 month research project targeted at Children who witness domestic violence. This project was done in coordination with the Home of the Innocents, the University of Louisville Kent School of Social Work and Metro United Way.

Center host the 3rd annual West Louisville Family Festival and Safety fair.

August 2002

Center president is honored with the Presentation Academy Tower Award for Human Service.

September 2002

Center hosts its annual Southern Indiana Autumn Amusements event at Hubers Family Farm. The Indiana Community Service award was presented to the Census Bureau and the Public Service award was presented to Professors Mimi McKay and Judy Meyer from Indiana University Southeast.

Center hosts annual meeting awarding the Public Service Award to Congresswoman Anne Northup for her support of The Center's capital campaign and children's services. Mason Rudd presented the Mary D. Rudd Volunteer Service Award to Ximena Suarez. This award is presented annually to outstanding individuals

who offer their skills, dedication, and compassion to support The Center's work.

Center welcomes new board members Cheryl Bachelder, Kim Tharp Barrie, Tony Bohn, and Steve Moya.

Center celebrates 25 years of the Domestic Violence Program and recognizes Pam Johnson, Direct of Client services for her twenty five years of service.

GE Elfins come out in force to volunteer at The West Louisville Campus.

**Timeline of Last
Year's Highlights**

DEAR FRIENDS, SPONSORS, BENEFACTORS, VOLUNTEERS, SUPPORTERS, EMPLOYEES AND PROGRAM PARTICIPANTS . . . this year has been one of vigorous growth for The Center for Women and Families. As our capacity to serve more women and families grows, The Center continues to seek opportunities to strengthen our commitment to support families shattered by domestic violence, sexual assault, and economic hardship.

Our tasks are clearly defined and our strong commitment to reach individuals traumatized by family violence, sexual assault, and poverty is exhibited in the addition of comprehensive programs and services in fourteen counties of Kentucky and Indiana.

Through the hard work and dedication of The Center's staff, we were recognized this year for our quality programming by both the Kentucky Domestic Violence Association and the Annie E. Casey Foundation. In the fall of 2002, the Casey Foundation announced their national *2003 Families Count National Honors Program Award* winners. The Center was selected as one of eight programs in the nation for this award. With it, the Casey Foundation recognizes the difference The Center makes in the lives of families struggling to survive in tough situations. On a local level, The Kentucky Domestic Violence Association recognized The Center's programs as Best Practice Models in the State of Kentucky. Best practice indicators related to our work on the establishment of Regional Advisory Boards, Immigrant and Refugee Outreach, Program

Integration, Prison Outreach, LGBT Outreach, and the establishment of an Individual Development Account Program for clients who turn to The Center for services.

Building on our program success, The Center focused on comprehensive facility needs through the completion of our capital campaign. As we entered the last phase of our campaign we were able to secure an \$800,000 Kresge Foundation challenge grant as part of our overall building acquisition and renovation plan.

Our Kentucky and Indiana services developed this year as we continued to shift programming to a more family centered model. We expanded both residential and non-residential services. Our

leadership team has designed specific initiatives to raise awareness and broaden the depth of services offered by The Center. Our children's team completed an 18-month research project targeting children who witness domestic violence. Their work positioned The Center to expand children's services and launch an awareness campaign to raise awareness about the impact of domestic violence on children. These initiatives will lay a strong foundation for future strategic directions and children's programming at The Center.

I am pleased that the CommonWealth IDA Program continues to make an impact in the lives of clients saving toward homeownership and new business development. This year more clients than ever are learning the value of savings and working to

October 2002

Domestic Violence Program Director Darlene Thomas serves as co-chair for Community Partnership for the protection of children.

Children's Team promotes peace and domestic violence awareness with PEACE – a Build - A - Bear that will travel to domestic violence shelters worldwide, visiting children who have been affected by domestic violence.

Center sponsors a vigil to honor and remember survivors of domestic violence. Carol Jordan and Dr. Theresa Rjack-Talley were present to talk about the impact of domestic violence on the family, local community and international community.

President Lynn Meyer receives The Center for Non-Profit Excellence Art of Leadership Pyramid Award for her role at The Center.

Center leadership announces the relocation of the Center's Louisville campus to the new Joan E. Thomas, MD Campus on South 2nd Street.

The Center Receives Prestigious National Award from the Annie E. Casey Foundation as part of the Families Count National Honors Program. One of eight in the nation, this award recognizes innovators that build on a community's strengths to support families.

November - January 2003

Center President serves on Mayor Abramson's community search committee for the new Chief of Police.

Willis initiative to dedicate the Rashaan Roland Willis adolescent room at The Center for Women and Families host its second annual Monte Carlo Night.

Grants to Encourage Arrest partnership with Oldham County Sheriff's department expands Center services in Kentucky Outreach and creates a full time staff presence in Oldham County.

The West Louisville Community celebrates the 40th annual West Louisville Holiday Tea.

March 2003

Center celebrates its 16th annual Celebration of Service – honoring Marie Abrams, Mary Moss Greenbaum, Allie Corbin Hixon, Katherine Raines, Ceciliana Skees, S.L., and Margaret Yeager Williams.

Center participated in an evening of art and film at The Kentucky Theater and hosted professional trainings on sexual abuse as part of Sexual Assault awareness month.

May - June 2003

Center completes Kresge Foundation challenge period raising a total of \$11.4 million dollars for projects at West Louisville, Shelbyville, Indiana, the 2nd Street campus, and annual fund.

In coordination with the Kentucky Derby Museum and Oxmoor mall The Center participates in Hats from the Heart – an event to raise civic pride in derby and raise dollars for many vital non-profits in our community.

Economic Success Programs connect to the Annie E. Casey Family Strengthening Table. This community group hopes to coordinate our efforts to improve neighborhoods, build strong families and in turn support children.

Center launches awareness campaign designed to raise awareness about the effects of domestic violence on children.

Bank One Spurs Economic Literacy Outreach Program. The partnership with Bank One allows the Center to provide financial literacy education and outreach to low income families working toward a more secure future.

The Kentucky Domestic Violence Association recognizes The Center for Innovative Best Practice in the following areas: Establishing Regional Advisory Boards, Integrating domestic violence and sexual assault services, holding quarterly client round tables, Immigrant and refugee services, Prison support groups, LGBT support groups, and the establishment of an Individual Development Account Program.

build a brighter future for themselves and their children. This unique partnership between the Metro Louisville Housing Authority and Republic Bank is positioned to change the economic face of our community through asset building, home ownership and small business development. We also expanded our Economic Success Program focus with an Economic Literacy Outreach Program, a new toll free Finance and Investment Help Line, and the addition of a new Web site (www.louisvilleabc.org) highlighting our Economic

Success Program and our work as a member of the Louisville Asset Building Coalition.

Our outreach staff is providing record levels of service. With the acquisition of our Shelbyville property, our staff is also helping us create a model plan for transitional housing outside of Jefferson County. Through a unique partnership with the Oldham County Sheriff's Department we were able to expand our legal justice presence in Oldham County. As we celebrate the third year of operation

of our Southern Indiana Shelter our services continue to grow in Washington, Scott, Crawford, Harrison, Clark and Floyd Counties in Indiana. The addition of these services helped eliminate one more barrier to service for clients in our fourteen county service area.

Training and outreach efforts continued this year with the addition of specialized training and services for men, local law-enforcement, the medical community, lesbian, gay, bisexual and transgender

people, and members of the faith community.

These efforts lay an important foundation for The Center in continuing to provide responsive, clearly defined, client-centered services. As we look toward the new year we will be poised to meet the challenges of our community as it relates to domestic violence, sexual assault, and economic hardship. With your support, we can face the challenges and opportunities ahead with confidence as we shape sharper visions for the future.



Members of The Center's Staff



Examples from the Children's Campaign



**2002 – 2003
Board of Directors**

Chair
Diane Everse

Vice Chair
David Fennell

Chair Elect
Angela M. Bisig

Treasurer
Anne Wilhelmus

Secretary
Marita Willis

Members-At-large
Nolen C. Allen
Joan E. Thomas, M.D.
Charles H. Forée

Directors
Fay Allen
Cheryl Bachelder
Dr. Barbara M. Baker
Tony Bohn
Warren Edwards
William J. Ehrig
Cheryl Fugatte
Gus Goldsmith
Patricia A. Kopacz
Dr. Renée Campbell Mapp
Lizzie G. Miller
Steve Moya
Debbie Murphy
Claudia Peralta-Mudd
Tom Seigle
Brenda J. Smith
Gail Strange
Kim Tharp-Barrie
Garry Throckmorton
Fran White
Brunhilda Williams-Curington

**2002 – 2003
Board of Trustees**

President
Charlotte S. Tharp

Vice-President
John-Robert Curtin

Secretary
Paula Hale

Trustees
Helen Harting Abell
Maydie Allen
Hiram Ely, III
Mary Gant
C. Edward Glasscock
Ollie Green
Bettie T. Johnson
Jan S. Karzen
Jessica S. Loving
Kathryn Mershon
Inez Segell

**Executive Institute
Class of 2002**

Celeste Anderson
Deanna Brady
Marcelline Coots
Heather Falmen
Libby Gray
Jennifer Hartlage
Jennifer Head
Nancy K. Hoke
Linda L. Holleman
Dawn Klemm
Michelle List
Kimberly Maffet
Melissa Tong
Laura Warren
Tina White

Balance Sheet

(year ended June 30, 2003)

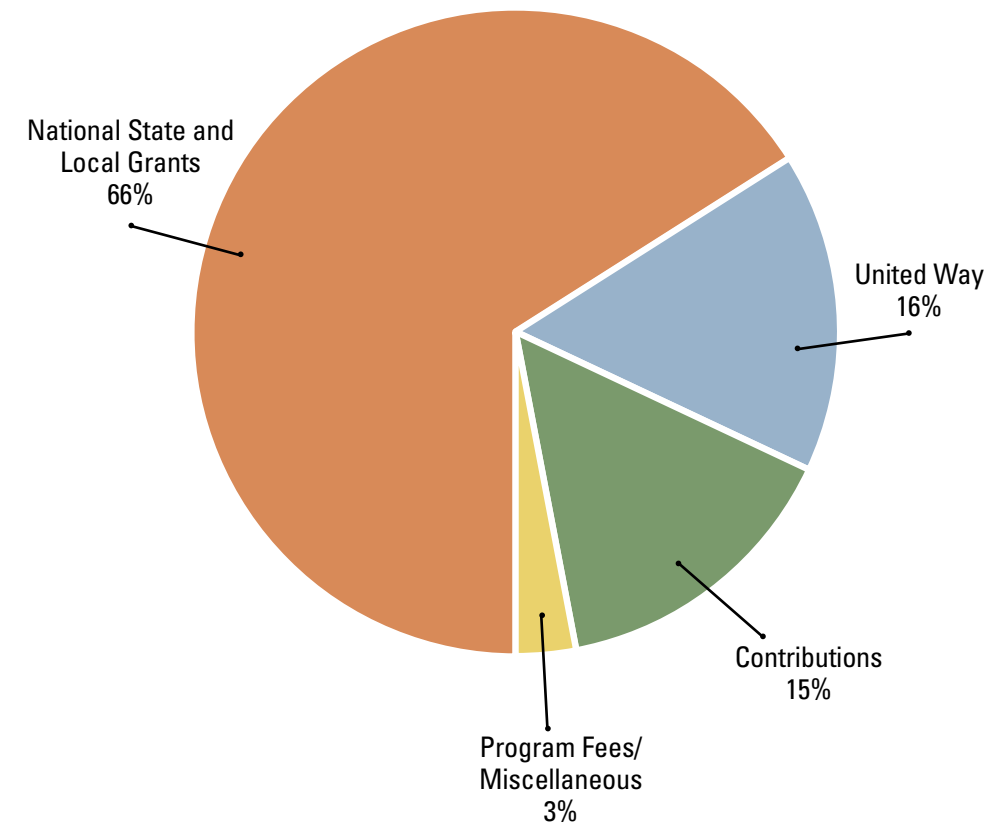
Assets	
Cash and Grants Receivable	\$ 2,306,732
Other Current Assets	3,853,222
Land, Building and Equipment (Net)	7,703,739
Endowment/Investments	1,972,450
Total	\$15,836,143
Liabilities and Fund Balance	
Current Liabilities	\$ 356,455
Long Term Debt	2,018,945
Fund Balances:	
Unrestricted*	6,286,353
Temporarily Restricted	5,201,940
Permanently Restricted	1,972,450
Total	\$15,836,143

*Facilities, furniture and equipment

General Fund

Revenues	
National, State and Local Grants	\$3,108,529
United Way	755,556
Contributions and Special Events	693,050
Program Fees/Miscellaneous	122,138
Total	\$4,679,273
Expenses	
Client Services	\$3,864,405
Administration	550,710
Fund Development	247,010
Total	\$4,662,125
Net Revenues	\$ 17,148

2002-2003 Funding Sources



2002–03 Members of The Golden Circle

The Center for Women and Families' Starfish Campaign is an ambitious, comprehensive campaign designed to expand The Center's facilities, programs, and endowment fund.

The following donors have committed to the campaign to support capital, endowment or annual fund giving.

The Starfish Campaign

1 Million or more

Mr. Gus Goldsmith

\$500,000 to \$999,999

Annie E. Casey Foundation
James Graham Brown Foundation
Mr. John Bill Keck
Kresge Foundation
Louisville Metro Government
U.S. Department of Housing and Urban Development

\$250,000 to \$499,999

Anonymous
Joan E. Thomas, M.D.
Joan E. Thomas, M.D. and Lee B. Thomas Foundation
Joan E. Thomas, M.D. and Mr. Lee B. Thomas

\$100,000 to \$249,999

Affordable Housing Trust - KHC
BB&T
Bank One Foundation
The Cralle Foundation
The Gheens Foundation
J & L Foundation
Bettie and Charlie Johnson
Humana Foundation
Longview Foundation, Inc.
WHAS Crusade for Children

\$50,000 to \$99,999

Helen Harting Abell
Ms. Meredith W. Brown
Brown & Williamson Tobacco Co.
Coalition for the Homeless - CDBG
Ms. Diane Cornwell
Joan Cralle Day
Mr. and Mrs. Michael Ehrler
Fifth Third Bank of Kentucky
Ms. Sandra Anne Frazier
Louisville Metro Council

Norton Healthcare Community Trust
OPM Services, Inc.

\$25,000 to \$49,999

Mr. James J. Bornstein
Mrs. Christie and Mr. Owsley Brown
CE and S Foundation, Inc.
CNA Foundation
Caesars Riverboat Foundation
Commonwealth Wine and Spirits, LLC
Hilliard Lyons Investments
Irwin Union Bank
LG&E Energy Foundation
Kathryn Mershon
Ms. Debra M. and Mr. Ron Murphy
National City Bank
RaShaan Willis Monte Carlo Night
Republic Bank & Trust Company
Rudd Equipment Company
Rudd-Sarfin Family Trust Fund
Mr. Nick Simon
The Wood and Marie Hannah Foundation
YUM Brands, Inc.

\$10,000 to \$24,999

AEGON Corporation
Altria Group, Inc.
Hon. Dave Armstrong in Honor of Carol Armstrong
Baptist Hospital East
Nina and Edward Bonnie
City of Shelbyville
CNA Insurance Foundation
Cotton & Allen, P.S.C.
Mr. John and Mrs. Mary Greenebaum
Carol J. Heckman, M.D.
Mr. Thomas P. and Ms. Chris Hirsch
Mildred V. Horn Foundation
Former Jefferson County Fiscal Court
Jewish Hospital Foundation
Mr. Steve and Mrs. Rita Moya
PNC Bank, Inc.

Preston Masonic Lodge
Shelby County Golf Charities
Shelby County Rock and Asphalt
William E. Barth Foundation
David and Pauline Wren

\$5,000 to \$9,999

Anonymous
Roland and Karen Ashby
Bales Foundation
Dr. Barbara Baker
Mrs. and Mr. Stewart Cobb
Deborah Ehrig
William J. Ehrig
Mr. Clyde and the late Mrs. Anne Ensor
Mr. Larry Ensor
David and Maura Fennell
Mrs. Harry S. Frazier, Jr.
Honorable Order of Kentucky Colonels
Kindred Healthcare, Inc.
Ms. Patricia A. Kopacz
LDF, Co.
Carol Jones Levitch
Janice and Richard Lechleiter
Dr. Barbara B. Lewis
Dorothy and Ron Pitt
RLR Charitable Foundation, Inc.
Mr. Thomas and Ms. Nina Seigle
Ms. Sue Speed
Whayne Supply Company
Ms. Martha White

Under \$5,000

Mayor and Mrs. Jerry E. Abramson
Acordia of WV
Ms. Donna Edelen and Dr. Brenton S. Adams
Ms. Fay Allen
Allstate Insurance Co.
American Physicians Assurance Corporation - Staff
Linda and Robert Anderson
Anderson, Bryant, Lasky, & Winslow, PSC
Anonymous
Ms. Melissa M. Arnold
Mrs. Amy S. Ashton
Associated Insurance Service, Inc.
Mrs. Minx and Dr. Sy Auerbach
Ms. Cheryl Bachelder

Bales Foundation
Mrs. Nancy S. Balf
Carmel B. Barber
Mr. Barry Barker
Ms. Cynthia C. Bates
Mr. Michael W. Baxter
BB&T

Ms. Kathy Beam and Mr. Robert Kotheimer
Dan and Jayne Becher
Bob and Evelyn Becker
Ms. June Becker
Ms. Sara L. Bein
Bell Aluminum Products
BellSouth
Mrs. and Mr. Lee Benovitz
Ms. Cheryl Benton
Beverly Beaver Interior Designs
Ms. Jeni Bickett
Hon. Angela M. Bisig
Bisig Communications
Ms. Janet Blake
Ms. Mary Ann Blake
Mr. Robert Blake
Martha and Jerry Bloom
Jon and Tracy Blue
Kathleen and John Blumenstock
Ms. Marlene J. Bohn
Ms. Mary S. Bomar
Mr. James and Ms. Gabriele Bosley
Ms. Carol Bottoms
Ms. Donna M. Bratcher
Mr. Charles R. Brawner, Sr.
Nina and Joe Brill
Ms. Carolyn S. Brooks
Ms. Deborah A. Bruce
Ms. Robin A. Bryant
Buffett Plumbins
Ms. Tonya M. Buckler
Judith Burdoine
Mr. Christopher and Ms. Mary Burke
Ms. Katie Bush
Ms. Mary Bush
Tomese and Craig Buthod
Mrs. Adee C. Butler
Mrs. Carol K. Butler
Bradley and Elizabeth Byrd
Celeste Anderson Byrne and Maurice Byrne
Cable Baptist Church
Frances Campbell

Mr. Melvin T. Campbell, Sr.
Capricorn Foundation
Charitable Trust

Ms. Helen B. Chenery
Andy and Mary Ruth Cherry
David and Pat Chervenak
Ms. Sherrie M. Childers
Mr. Terrence Cody
Ms. Christie S. Coe
Ms. Ann L. Coffey
Ms. Charlotte A. Colyer
Ms. Carol L. Cornette
Covenant Group
Ms. Gwen Crawley
Ms. Sharon K. Criswell
Mary and Barry Cummings
Anita and Michael Cunningham
Rose Dagirmanjian
Ms. Carol E. Davies
Ms. Ann C. Davis
Ms. Karen Davis
Ms. Melissa Dawson
Rita and Patrick Debes
Mr. Michael and Ms. Kathleen Dicken
Mr. William C. Dieruf, III
Treva W. Donnell
Martha and Thomas Dorsey
Ms. Margie A. Drake
Mrs. and Mr. Francis R. Duerr
Ms. Jeanne K. Duffy
Joy Duke
Ms. Rachelle M. Dulle
Mr. Harry G. Edelstein
Chip and Becky Edwards
Mrs. Deborah Ehrig
Ms. Lee Ann Ellingsworth
Ms. Julie Elliott
Mrs. Diana Engel
Ms. Frances E. Englander and Mr. Perry S. Jacobs
Ms. Sally Erny
Dr. and Mrs. Samuel Eubanks
Ms. Kay Evans
Ms. Diane Everse
Honorable Ellen B. Ewing
Ms. Nancy Ewing
Fran Fach
Family Care Dentistry
Fazio Creative
Ms. Katharine Fenton
Kathy Finnegan
Mary Lee and George Fischer
Mr. Greg Fischer
Ms. Lynn Fischer
Maud R. Fiegelman

Ms. Ruth E. Flint
Mr. and Mrs. Charles H. Foree
George P. Foree
Ms. Sharon A. Fragier
Fraternal Order of Police - St. Matthews
Mr. Les Freeman
Joan and Steve Fries
Bonnie H. Fritschner
Mr. Edgar Fritz and Mrs. Jeanne W. Fritz
Ms. Cheryl L. Fugatte
Ms. Melissa A. Fultz
Judy and Peter Galitzine
Nancy Gall-Clayton
Ms. Jenifer Gamble
Mr. and Mrs. John F. Gates
Holly H. Gathright
Annette and Harry Geller
George Buffat Co, Inc
Ms. Maria Gerwing Hampton
Mrs. Beulah W. Gilchrist
Ms. Ann S. Gillies
Gist Piano Center
Ms. Rebecca M. Glasser
Ms. Verna C. Goatley
Mr. Edgar S. Goins
Ms. Rhoda M. Goodman
Mary Louise Gorman
Ms. Michelle A. Gorter
Grace Evangelical Free Church
Naiesha Gray
Ms. Emily Greer
Mrs. Mona Griffin and Dr. E. L. Griffin
Mr. Troy L. Grubb
Mr. Jay B. Gulick, Jr.
Ms. Sandy Gutermuth
H & H Systems, Inc.
Mrs. Leslie Hale
Ms. Carolyn Hardesty
Ms. Catherine E. Harris
Mr. Phillip H. Harris
Anonymous
Harvey Browne Presbyterian Church
Ms. Karen L. Haxelwood
Dianne and Benedick Hayden
Mrs. Sara Haynes and Mr. James Haynes
Hazel & Walter T. Bales Foundation, Inc.
Ms. Genevieve M. Heavrin
Ms. Nancy Heavrin
Ms. Marcy Lynn Heilman
Ms. Susan Heim

Heine Brothers' Coffee
Mr. and Mrs. William S. Heinz
Mr. Robert W. Henderson
Mr. Alan W. Hennessey
Mr. Chad Hennessey
Michelle and Allen Hentzman
Dale and Craig Herink
Ms. Louis F. Hettinger
Mr. Kenneth L. Hicks
Ms. Meg Higgins
Ms. Cathy Hinko
Mr. James G. Hodge, Attorney
Holdaway Medical Services LLC
Mr. and Mrs. Kenneth E. Holtzaple
Ms. Mary Holliday Hopkins
Horizon Research International
Ms. Margaret Horlander
Ms. Becky Houser
Ms. Rainer Hoyer
Ms. Jennifer E. Hubbard
Humana Inc.
Ms. Carrie Hunter
Insuramax
Jack Fry's
Ms. Kathy A. Jarvi
Ms. Linda L. Jasper
Ms. Patricia Jaye
Jill and Franklin Jelsma
Rep. Joni L. Jenkins
Mr. Frank W. Heft and Ms. Janet Jernigan
Mrs. Deborah K. Johnson
Ms. Linda T. Johnson
Ms. Pam C. Johnson
Ms. Rose Mary Johnson
Ms. Jill A. Jones
Kappa Kappa Kappa, Inc.
Mr. William A. Kantlehner, III
Mr. Scott Karem
Kids Academy
Everlener King
Charlotte and Richard Kirby
Sharon Klein
Tracy Klein
Mr. Barry Kornstein
Ms. Kathy Kremer
Candace Kresse
Dr. Mitzi R. Krockover
Mr. and Mrs. William C. Kuchenbrod
Ms. Mary Ann Kuerzi
Ms. Mary Brenda Kustes
Susan and Steve Kute & Family

Reverend Lewis Lancaster and Reverend Kathy Lancas
Mr. and Mrs. Mike Lauer
Ms. Rhonda Lee
Ms. Anna L. Leezer
Phyllis and David Leibson
Dr. and Mrs. Ronald L. Levine
Mr. Bert Levy, LCSW, BCD
Ms. Julia E. Lewis
Ms. Anne Linden Steele
Ms. Carolyn M. Linton
Meredith Loeb
Mrs. Jane H. Logsdon
Sr. Catherine Mahady
Ms. Debbie A. Mahoney
Dr. Renee Campbell Mapp
Mindy L. Martin
Ms. Nancy C. Martin
Ms. Sharita Martin
Mr. and Mrs. Richard Matheny
Ms. Donna L. Matherly
Theresa and Michael Mattei
Mrs. Cheryl A. Matthews
Ms. Nancy Matyunas and Mr. George Rodgers
Ms. Kathryn W. May
Mr. Richard W. May
Mr. and Mrs. Randy McAtee
Tori and Mac McClure
Steve and Melanie McCool
Mrs. Susan H. McGavic
Ms. Jeanne McKinley
Dottie and George McNair
Mr. and Mrs. John V. McReynolds
Ms. Phyllis Mehler
Ms. Marilyn O. Meredith
A. Phoebe and Raymond Meyer
Susan and Bob Meyer
Mr. and Ms. Howard Meyer
Marilyn Meyer
Leonard and Mary Lou Meyer
William Ravil Meyer Family
Ms. Lillian C. Milanof
Mrs. Janet and Mr. Ralph Millen
Mr. Dennis M. Miller
Mr. and Mrs. Harry Miller
Mr. Samuel E. Miller
Ms. Lois Minter
Mr. Leonard J. Moisan
Joan and Winston Money
Betty E. Monroe
Monsignor Newman Ladies Auxiliary
Susan M. Moore
Janet and Thomas Moore
Debra W. Moorehead

Ms. Mary E. Morrison
 Mrs. Julie B. Morton
 Moses Ruben Foundation
 Mrs. Margaret F. Moseson
 Munson Business Interior, Inc.
 Toni Murray and J. Roger Dill
 Mr. and Mrs. Michael Nabicht
 Mr. and Mrs. Robert M. Nash
 Ms. Vivian Neagli
 Randall Neely
 Carolyn and David Neustadt
 Niche Marketing, Inc.
 Ms. Norma Niehaus
 Ms. Njeri Njuguna
 Ms. Mary L. Noonan
 Mary Ellen and Michael Norman
 Dr. Sheila O'Donnell-Schuster
 J. Howard Olds
 Ms. Kaye Olgin
 Ms. Rita R. Olshansky
 Barbara and Henry Ormsby
 Mr. Glenn M. Ow
 Mrs. Barbara G. Pass
 Ms. June Payne
 Douglas and Elizabeth Peabody
 Ms. M. Claudia Peralta-Mudd
 Mrs. and Mr. David M. Peterson
 Ms. Rita Peterson
 Ms. Laura Petry
 Mrs. Anna B. Pfeil
 Helen and Thomas Pike
 Ms. Weddie Pitts
 Ms. Allison Pogue
 Ms. Laura Luanne Pohlmann
 Hiram C. Polk, M.D. and Susan Galandiuk, M.D.
 Ms. Susan Popham
 Mrs. Brenda S. Poston
 Ms. Cornelia Poston
 Premiere Childcare & Preschool Inc.
 Ms. Kathy D. Prewitt
 Providian Bancorp Services/First Select Corporatio
 Carol and Raymond Pryor
 Ms. Paula Pugh
 Ms. Janey Purcell
 Ms. Carletta C. Radford
 Norman D. Radtke MD
 Ms. Shirley Ann Raque
 Pamela and James Ratterman
 Ratterman & Sons, Inc.
 Ms. Lynn B. Reed
 Ms. Karen Reis
 Ms. Bonnie Richterkessing
 Mr. William D. Rickert
 Ms. Joan Riehm

Ms. Kitty Riggs
 Ms. Janet W. Rink
 Mr. Gehrig Robinson
 Denise M. Robison
 Lois Roe
 Ms. Siddy Rosenberg
 John and Bonnie Roth
 Mr. and Mrs. Robert W. Rounsavall III
 Ms. Sheila Rucker
 Ms. Ann Rudrauff
 Sue A. Russell
 Mrs. Kaelin M. Rybak
 Mrs. Corky Sachs
 Mrs. Terry Sales
 Mrs. Allyn M. Schadt
 Louise T. and Robert Schulman
 Dr. Laura S. Schweitzer and Dr. Michael Gruenthal
 Ms. Martha T. Scobee
 Ms. Phyllis M. Senn
 Kathy and Barry Shaughnessy
 Ms. Kelly Shaughnessy
 Ms. Celeste E. Shean
 Mrs. Ellen B. Shelby
 Shelby County Trust Bank
 Ms. Sally L. Shown
 Ms. Doris M. Silveri
 Ms. Marsha K. Simpson
 Sisters of the Good Shepherd
 Sivori Catering
 Ms. Cammie Sizemore
 Ms. Brenda J. Smith
 Ms. Catherine G. Smith
 Ms. Janis Smith
 Ms. Mary E. Smith
 Jonathan and Stephanie Smith
 Mr. Jacque Sokolov
 Ms. Heather O. Spalding
 Ms. Judith Spalding
 Ms. Marian Spalding
 Ms. Sharon Sparrow
 St. Xavier High School
 Star Care Foundation
 Ms. Mary A. Starr
 Marjorie and Joseph Staten
 Jodie and John Steele
 Ms. Margaret Steere
 Ms. Kathy Steier
 Laura and Jack Steiner
 Mr. Douglas Stenger
 Robert and Mary Ann Stenger
 Ms. Petra Stephens
 Sterling G. Thompson Co.
 Stitch-It-Etc.
 Ms. Elizabeth C. Stivers
 Mr. William M. Street

Ms. Brenda L. Stringer
 Ms. Patti Swope
 Hanadi Talaat
 Mrs. Carla M. Taylor
 Mr. Cecil M. Taylor
 Ms. Erika Taylor
 Ms. Charlotte S. Tharp
 The Blue Family Cobalt Foundation
 The UPS Foundation
 This Mother's Daughter Book Club
 Ms. Darlene B. Thomas
 Glenn and Ann Thomas
 Ms. Emma J. Thompson
 Ms. Mary Stuart Thompson
 Stephen and Vicki Thompson
 Mr. and Mrs. William H. Thompson, Jr.
 Mr. Garry Throckmorton
 Ms. Elizabeth Tichenor
 Mr. Edward Tillett
 Carol and Paul Tittel
 Ms. Geraldine Titus
 Troop 1344 Kyanna Council
 Mrs. Anne W. Tuley
 UPS Foundation
 Ms. Linda Underwood and Mr. James L. Vonderhaar
 Underwriters Safety & Claims Inc.
 The V. V. Cooke Foundation
 Mr. and Mrs. Arnold T. Van Etten
 Mrs. Marcia Van Fleet
 Ms. Patricia M. Varga
 Voit Electric Co.
 Dr. William P. Vonderharr
 Ms. Bonnie Walker-Armstrong
 Ms. Carla F. Wallace
 Leslie and Charles Waller
 Ms. Jane M. Walsh and Mr. Chris Harrell
 Mr. and Mrs. William Walsh, III
 Mr. and Mrs. Ronald W. Ward
 Mr. and Ms. Thomas C. Waskevich
 Ms. Vicki Way
 Ms. Vicki Weber
 Mrs. Marsha Weinstein
 Ms. Ellen Weis
 Dr. Morris and Mrs. Terry Weiss
 Welenken Himmelfarb & Co.
 Sheila and Patrick Welsh
 Ms. Shannon Whelan
 Ms. Fran White
 Ms. Joanne White
 Thyra and Robert Whitford
 Ms. Anne Wilhelmus

Mr. Buford S. Williams
 Ms. Deborah S. Williams
 Ms. Deborah B. Williams
 Brunhilda Williams-Curington
 Ms. Marita A. Willis
 Mr. Robert E. Willis, Jr.
 Beverly C. Wilson
 Ms. Ellen Wilson
 Mr. and Mrs. Wilson
 Mr. Robert H. Wimsatt
 Mr. and Mrs. David Winbigler
 Kim and Chris Wiseman
 Dr. Richard S. Wolf
 Wright Construction and Excavating
 Karen C. Wright
 Ms. Linda M. Yuda
 YUM! Brands Foundation, Inc.
 Z Salon & Spa

Annual Fund

Just as a circle has no beginning and no end, members of The Golden Circle are continual partners in the mission of The Center for Women and Families. The status of "Lifetime Member" is bestowed in honor of pledges accrued over a lifetime. These gifts may be made by individuals, corporations, foundations and organizations in the amount of \$25,000 or more, or through confirmed deferred gifts of \$50,000 or more.

Golden Circle Lifetime Members \$25,000 or more

Helen Harting Abell
 AEGON Corporation
 Maydie and Nolen Allen
 Altria Group, Inc.
 The Annie E. Casey Foundation
 Anonymous
 Anthem Blue Cross and Blue Sheild
 Dr. Carol E. Baker
 Bank One of Kentucky
 Baptist Hospital East
 BB&T
 BellSouth
 Mr. and Mrs. Barry Bingham, Jr.
 Mr. James J. Bornstein
 Ms. Meredith W. Brown
 Mr. Owsley and Mrs. Christy Brown
 Brown & Williamson Tobacco Corporation
 Brown Forman Corporation
 Cabinet for Health Services
 Cabinet for Workforce Development
 Caesars Riverboat Casino Foundation, Inc.
 Michael L. Cappy Foundation
 CE and S Foundation, Inc.
 City of New Albany
 Clark County United Way
 Clark Memorial Hospital
 CNA Foundation
 Coalition for the Homeless
 Commonwealth of Kentucky

Commonwealth Wine and Spirits, LLC
 The Community Foundation of Louisville
 Community Foundation of Southern Indiana
 Ms. Diane Cornwell
 Cotton & Allen, P.S.C.
 The Cralle Foundation
 Department of Health and Human Services
 Department of Labor
 Diversified Financial Products, Inc.
 Mr. and Mrs. Michael Ehrler
 Clyde F. Ensor
 Estate of Elizabeth Coolidge
 Fifth Third Bank of Kentucky
 Floyd County Auditor
 Floyd County Fiscal Court
 Floyd County United Way
 Ms. Sandra Anne Frazier
 George P. & Henrietta D. Whipple Foundation
 The Gheens Foundation
 Mr. Gus Goldsmith
 Marlene and J. David Grissom
 Harrison County Community Foundation
 Ms. Helen L. Heddens
 Hilliard Lyons Investments
 Humana Foundation
 Indiana Criminal Justice Institute
 Indiana Family & Social Services
 Division of Family and Children
 Irwin Union Bank
 J & L Foundation
 James Graham Brown Foundation
 Jefferson County Department of Human Services
 Jefferson County Grants to Encourage Arrest
 Jefferson County Human Services
 Jefferson County Police Department
 Jewish Hospital HealthCare Services
 Bettie and Charlie Johnson
 Kentucky Domestic Violence Association
 Kentucky Housing Corporation
 Kentucky IOLTA Fund of the

Kentucky Bar Foundation
 Kentucky Justice Cabinet
 LG&E Energy Foundation
 Longview Foundation, Inc.
 Louisville Bar Foundation
 Louisville Gas & Electric Co.
 Louisville Metro Government
 Kathryn Mershon
 Metro United Way
 Mrs. Elizabeth M. Moore
 Ms. Debra M. Murphy
 National Association for Public Interest Law
 National City Bank of Kentucky
 Norton Foundation
 Norton Healthcare
 Paul Ogle Foundation, Inc.
 PNC Bank, Inc.
 Publishers Printing Company
 Purdue University
 Ms. Margaret T. Redmon
 Republic Bank & Trust Company
 Mr. and Mrs. Mason C. Rudd
 Rudd Equipment Company
 Seven Counties Services
 State of Indiana
 Target
 Joan E. Thomas, M.D. & Mr. Lee B. Thomas
 Joan E. Thomas, M.D. & Mr. Lee B. Thomas Foundation
 Treasurer of Floyd County
 Treasurer of Jefferson County
 Treasurer of Shelby County
 U.S. Department of Justice
 U.S. Department of Housing and Urban Development
 United Way of Scott County
 The UPS Foundation
 Vencor, Inc.
 WHAS Crusade for Children
 WLKY-TV
 Women 4 Women
 The Wood and Marie Hannah Foundation
 YUM! Brands, Inc.

Golden Circle Annual Members \$5,000 or more

Helen Harting Abell
 Altria Group, Inc.
 The Annie E. Casey Foundation

Bank One of Kentucky
 Ms. Meredith W. Brown
 Caesars Riverboat Casino Foundation
 CE and S Foundation, Inc.
 Citigroup Foundation
 City of New Albany
 Commonwealth of Kentucky
 Diane Cornwell
 Harrison County Community Foundation
 Henry County Fiscal Court Fund
 Humana Foundation
 J & L Foundation
 Kentucky Domestic Violence Association
 Louisville Metro Government
 Louisville-Jefferson County Metro Government
 Masonic Lodge #281 F. & A.M.
 Metro United Way
 National City Bank of Kentucky
 Purdue University
 Ms. Margaret T. Redmon
 Rudd Equipment Company
 Joan E. Thomas, M.D.
 Treasurer of Floyd County
 Treasurer of Shelby County
 UPS Foundation, Inc.

Golden Circle Johnson Society \$2,500-\$4,999

Alcoa Fujikura LTD
 Ms. Ann T. Allen
 The Community Foundation of Louisville
 Community Foundation of Southern Indiana
 Estate of Jesse Grissom
 General Mills Foundation
 George P. & Henrietta D. Whipple Foundation
 Joseph K. & Mariana S. Maloy Foundation
 Literary Society of St. Catherine Siena
 Ollie Green & Company, CPA'S
 N. David Pullem, CPA
 Glenn and Ann Thomas
 Tigers Athletic Club
 United Way of Scott County
 The V. V. Cooke Foundation

Golden Circle Annual Members \$1,000-\$2,499 18th Annual Cherokee Golf Classic – Ms. Deb Burda Anonymous Dr. Mark A. Abram AEGON Corporation Allegra Print and Imaging AmeriHealth Mercy Linda and Robert Anderson Anonymous Beta Sigma Phi - Preceptor Zeta Chapter Mrs. Marilyn and Mr. Dwight Chamberlain Dr. Donn R. Chatham Colgate-Palmolive Company Commonwealth Bank & Trust Co. The Courtenay Foundation Darrell Griffith Foundation, Inc. David W. Henderman Foundation LuLu Lenihan Davis Echelon Press Mr. Bill Ehrig Ms. Debbie Ehrig Mr. Hiram Ely III Ms. Diane Everse David and Maura Fennell Fifth Wheel Women's Club First Christian Church - Outreach Mrs. Harry S. Frazier, Jr. Ms. Mary Anne Fueglein Ms. Karen K. Galligan Greenebaum Doll & McDonald PLLC Dr. and Mrs. Diller B. Groff Heine Brothers' Coffee Hurstbourne Christian Church Mrs. Dorothy C. Joseph Mr. William G. Kaelin Kappa Kappa Kappa Lynn Kirby Louisville Apartment Association Merck Employee Giving Campaign Creighton E. Mershon, Sr. Kathryn Mershon William Ravil Meyer Family Morrison Family Charitable Trust Norton Healthcare Ohio Valley United Way, Inc. Presbyterian Church USA Michael Reid	Remember When Productions, Inc. Scott County Community Foundation, Inc. Severs Family Fund Stoll-Ballard Fund The Creative Difference Foundation Women in Networking II William and Mary Yarmuth YUM Brands, Inc. YUM! Brands Foundation, Inc. Margot and Carl Zoeller Zoeller Co. The Circle of Hope \$500-\$999 Aaron's American Legion Auxiliary Unit #244 Anderson, Bryant, Lasky & Winslow, P.S.C. Mr. George Bailey and Ms. Porter Watkins Mr. Roberto Bajandas Baptist Hospital East Mr. Richard L. Becker Bellarmine University Mrs. and Mr. Edith S. Bingham, Jr. Jesse C. Bollinger Harry and Julie Borders Elaine and Donald Bornstein Jane T. Breece Ms. Celeste A. Byrne and Mr. Maurice A. Byrne James C. Carter Church of the Ascension of Our Lord Commonwealth Wine and Spirits, LCC Mr. Dewey DeWeese Ms. Heather Falmen First Unitarian Church H & H Systems And Design, Inc. Dale and Craig Herink Dr. Susan Herlin Mr. and Mrs. Marshall V. Heuser Ms. Mary E. Hochgesang Janet and Jonathan Hodes Nancy A. Howard Jacobson's Kappa Kappa Gamma, Louisville Alumnae Assoc. Kentucky Derby Museum Corporation Mr. and Mrs. Robert E. Kulp, Jr.	Kathleen and Kenneth Loomis Louisville Alumnae Club Martha T. McCoy, M.D. Ms. Barbara D. McCubbins Alan and Julie McDearman Medical Imaging Consultants, P.S.C. Leslie and James Millar Robert and Carol Miller Morton Memorial United Methodist Ms. Molly Foundation Mr. and Mrs. Thomas J. Payette Ms. Evelyn Peeler Process Machinery Inc. Ms. Linda J. Pursell Mrs. Terry Sales Ms. Lisa Scherer Mrs. Peg and Mr. Phil Schervish Ms. Brenda J. Smith St. Matthew's Episcopal Church Sysco/Louisville Food Service U of L Controller's Office Ms. Linda Underwood and Mr. James L. Vonderhaar Ursuline Sisters Western Kentucky Gas Company David Wetmore Xi Beta Alpha The Circle of Compassion \$250-\$499 Mr. Robert J. Abel Ms. Lisabeth H. Abramson Dr. Liliyalce Akers Mrs. Frances N. Alden and Mr. William O. Alden American Legion Aux Shawnee Unit #193 Ms. Cheryl Bachelder Beta Sigma Phi City Council Caldwell Tanks CardioVascular Associates PSC Church of the Epiphany Mrs. Lee Cochran Community Bank Faith United Church of Christ Falls City Mustang Club FKI Security Group Frankenthal Group Foundation Ms. Kristin Fults Geo. Pfau's Sons Company, Inc. Gohmann Asphalt/Construction, Inc.	Mrs. Jeanne Heberle Karen Hensel and Greg Lindauer Hillview C.P.W. Indiana University Foundation Ms. Linda R. Ives and Ms. Christa Steinbrenner Jefferson County Medical Society Mrs. Juanita Junkin King Corporate Group, LLC Laurel and William Lancaster Calvin and Helen Lang Ms. Jane Lapinski Lincoln Hills Christian Church - Benevolence Team D.A. Lipp Ms. Michelle List Louisiana District Attorneys Association, Inc. Ms. Ann Lovejoy Lyndon Lodge No. 2052 Mr. Kevin McAdams Mr. and Mrs. Daniel D. McGee Mr. and Mrs. Robert S. Michael Ms. Bettye J. Morgan Mr. W. Austin Musselman and Mrs. Layla G. Musselma Payne Street Pottery & Gallery The Rawlings Company Raytheon Company Carolyn and John Reisert Ms. Siddy Rosenberg Mrs. Kate Rudd Anonymous St. Stephen United Church of Christ Robert and Mary Ann Stenger Stillpoint, Inc. TLC Nurses Registry Mrs. Anne W. Tuley U of L Women's Center Ursuline Campus Schools/Sacred Heart Academy Wesley House Community Services Women Lawyers Association Women Lawyers Association- Jefferson County Ms. Susannah Woodcock and Mr. David B. Tachau Ann Zimmerman The Circle of Courage \$100-\$249 Marie and Ronald Abrams Academy of Our Lady of Mercy	Actors Theater Development Board Ms. Donna Edelen and Dr. Brenton S. Adams All God's Children Collectors Club Alpha Delta Kappa Altrusa International, Inc. American Legion Highland Post #201 Mr. George R. Anderson LeAnn and Jim Andres Mr. and Mrs. Steve Andriot Architecton Mr. and Mrs. Phil Ardery Ascension School Mrs. Barbara S. Aubrey B.G. and ME Modeling Club Dr. Barbara M. Baker Mr. Barry Barker Mrs. Kimberly T. Barrie Dan and Jayne Becher BellSouth Mr. George and Mrs. Beverly Bissig Betty Blackwell Ms. Colleen Boeckmann Donna and Bruce Bohn Ms. Myrna L. Boland Mr. and Mrs. Joseph Bopp Raymond F. Bossmeyer Ms. Patricia L. Bradley Mr. and Mrs. Bob Bramlett Carla and Bradley Broecker Mrs. Catherine A. Brown Mr. David Brown Mr. and Mrs. H. Hewett Brown David and Jane Browne Mary Lou and Bob Bryant Ms. Delinda Stephens Buie Ms. Theresa Burch Irene Burnett Robert and Lucy Button Elaina Cain and CJ Robinson Cameron Mitchell Restaurants Ms. Mary P. Casey Ms. Diane A. Chalmers Florence Chandler David and Pat Chervenak Mr. Mike and Ms. Sue Chmilewski Christ Church United Methodist City of Louisville City of Louisville Office for Business Services City of Shelbyville	Ms. Maria Clayton Stephanie Clemans Ms. Cindy Clifton Sherry A. Cockrell Blair Ms. Ann L. Coffey Commonwealth Attorney's Office Community of Christ - Forest Hill Congregation Ms. Harriet Conely Elizabeth Conner Mr. and Mrs. Robert M. Connolly Ms. Patricia A. Cooke Ms. Carol L. Cornette Ms. Volindah J. Costabell Kathy and Steve Cottner Culbertson Baptist Church Mary and Barry Cummings Ms. Sarah Lynn Cunningham Mr. James L. Daugherty, Jr. Mrs. Carol and Mr. Howard Davis Dr. William G. Davis, Jr. Macarena Dearie Ms. Sharon and Mr. James Dearing Patricia and Dewey Deweese Nancy and Erich Doll Ms. Sandy Dorsett Ms. Suzanne Edwards-Simms Ms. Sandra L. Eiden Ms. Frances E. Englander and Mr. Perry S. Jacobs Estate of Kathryn Johnson William and Sarah Ewing Mr. and Mrs. Douglas Farnsley Dr. and Mrs. Paul Fleitz Mrs. Margaret C. Flowers Floyd Memorial Hospital & Health Services Anna Frank Wollak Mr. and Mrs. Paul Franz Ms. Beth Freibert Friends Gallesia Club Ms. Mary M. Gant Mr. and Mrs. Lee Garlove Gideon House Ms. Gail R. Gilbert Mrs. Beulah W. Gilchrist Glaser's Collison Centers Dr. Linda H. Gleis Ms. Mary Jo Gohmann Goldberg & Simpson, PSC Ms. Jennie Goldstein	Mary Louise Gorman Ms. Sharon Gorski Grinstead Group, Inc. Ms. Virginia and Mr. Edward Guilford Anonymous Hear in Kentucky, Inc. Mr. and Mrs. William S. Heinz Mr. Thomas A. Heleringer and Ms. Deanna Heleringer Mr. and Mrs. Gregory L. Hensley Ms. Melanie Hensley J.C. Hill Family Ms. Cathy Hinko Mrs. Ilma M. Hirsch Alsie Hord Barry R. Horowitz Human Innovation Center Ms. Cathe Hutchens Industrial Equipment Company, Inc. Irotus Manufacturing Mr. Albert Jarboe Ms. Patricia Jaye Jewish Hospital HealthCare Services Ms. Pam C. Johnson Mr. and Mrs. Alan J. Jones Ms. Jill A. Jones Ms. Juliette Jones Lenne and Veneda Keithley Kentuckiana Women Life Underwriters Kentucky District Council Assemblies of God, Inc. Mr. and Mrs. G. William Keyes Teresa Kiersznowski Mrs. Margot L. Kipfer Jon Klein Tracy Klein The Klein Family Foundation Dawn M. Klemm Ms. Patricia A. Kopacz Ms. Tammy K. Krebs Ms. Kathleen A. Kurre L & N Employees Giving Fund Mrs. Deborah K. Lancaster Ms. Sharon Landrum Ms. Arnetia Lasley Ms. Molly Leonard Mrs. and Mr. Mark S. Lewis Ms. Mildred D. Lewis Ms. Tara S. Lewis	Meredith Loeb Mr. Brian Logsdon Lucy and Charles Long Louisville General Surgery Lynn Homes, LLC Mr. Dennis F. Mader Ms. Bonny Manning Ms. Mary Mannix Ms. Patricia B. Markstrom Mr. John D. Martin Ms. Nancy C. Martin Rep. Mary Lou Marzian Masonic Lodge Robert Matson Ms. Carol Mattingly Ms. Nancy Matyunas and Mr. George Rodgers Max & Erma's Restaurant Ms. Cheryl May Ms. Lisa Ann McBride Steve and Melanie McCool Mr. Neil Mellen Mr. Stephen L. Merker A. Phoebe and Raymond Meyer Ms. Elise G. Meyer Mr. and Ms. Howard Meyer Ms. Joyce A. Meyer Leonard, Jr. and Mary Lou Meyer Mr. Dennis M. Miller Mr. and Mrs. Harry Miller Joan and Winston Money Susan M. and Jessica Ann Moore Ms. Laure A. Morris Ms. Mary and Mr. James Morris Ms. Denise Morrison Amelia Mudd Ms. Amy Mudd Ms. Debra M. Murphy Ms. Virginia Murray National City - Intl. Div., 31-7c National Coalition Against Domestic Violence Ms. Vivian Neagli Ms. Diana L. Nemeč New Albany Business and Professional Women's Organ New Zion Baptist Church Sarah and Charles O'Koon Ms. Kathleen M. O'Neil Oakland Baptist Church Okolona Pest Control, Inc. Old Father & Morris, Attorneys at Law
--	---	---	---	---	--	---	--

Old National Bancorp	St. Stephen United Church Staff	Kristie and Michael Adams	Mr. Curtis J. Block	Chilton & Medley	Ms. Ann C. Davis	Annette and Harry Geller	Patricia A. Hart
Mrs. Kathy V. Olliges	Rita and Harvey Starr	Mr. R. Wallace Adams and	Ms. Judith Bloor	Ashlea Christiansen	Mr. Mike Davis	Mr. Fredrick R. George	John A. Hayes
Our Lady of Lourdes Church	Ms. Margaret Steere	Mrs. Sally B. Adams	Monica H. Boggs	Church Women United -	Dr. Susan H. Davis	Joanne L. Gibson	Deborah and Michael Hayes
Mark Overdyk	Mr. and Mrs. Douglas D. Stegner	Mr. Rob Adams	Mr. and Mrs. James P. Boland	Louisville Area	Ms. Carol Dawson	Ms. Martha K. Gilbert	Mr. Phillip R. Hayes
Dr. Lafayette G. Owen and Mrs.	Mr. Alan Steinmetz and	Olubunmi Adekunle	Mr. Michael R. Boley	Dr. Lee R. Chutkow	Mr. Ronald A. Day, D.C.	Ms. Ann S. Gillies	Ms. Kathryn T. Head
Patti Perleberg-Owen	Ms. Joetta S. Steinmetz	Ms. Lana Al Zoubi	Mrs. Cheryl and Mr. Brian Bonnet	Mr. Jason A. Cissell	Rita and Patrick Debes	Mr. Steven Gilliland	Ms. Mary Ann Head
Parents Without Partners CYA	Stevie Ray's Blues Bar	Ms. Barbara Albert	Ms. Barbara J. Borders	Janet Clampitt	Mr. James H. Deisenroth	Girl Scouts of Kentuckiana	Dr. J. Robert Heath and Dr.
Mr. Kenneth G. Parsons	Ms. Patsy Straub	Ms. Charlotte Alexander	Ms. Carol Bottoms	Mr. Craig W. Clark	Rabbi Chester Diamond	Ms. Mary Jane Glaser	Claudia J. Heath
Ruth and Frank Payne	Ms. and Mr. Ernest C. Stroxtile	Dana Allen	Ms. Ruth E. Botorff	Ms. Martha E. Clark	Mr. Donald G. Diebold	Ms. Penny U. Goddin	Captain Ted Heavrin
Ms. M. Claudia Peralta-Mudd	Mrs. Nicole B. Taylor	Julie and Kenneth Allen	Ms. Sharon L. Bowles	Hon. Denise M. Clayton	Mr. and Mrs. Paul Disney, Jr.	Mrs. Sue Godfrey and Mr. Edwin	Ms. Carol W. Hebel
Ms. Carolyn Peters	Tennessee Coalition Against	Ms. Barbara Alvey	Ms. Alice Bowling	Ms. Susy Clearwater	DJ, Inc.	Godfrey	Ms. Marcy Lynn Heilman
Joy Peterson	Domestic and Sexual Vi	Mr. Bruce Anderson	Mr. Thomas Bowman and	Ms. Angela and Mr. Paul Clifford	Melissa and Kenneth Dobson	Mary and Mark Goeing	Mr. Robert Heinz
Ms. Laura Petry	The Community Builders, Inc.	Ms. Carol T. Anderson	Mrs. Lou Bowman	Ms. Mary S. Coblin	Donna Lawrence Productions,	Mr. and Mrs. Stuart S. Goldberg	Dr. Michael H. Heit
Ms. Melanie Pierce Prior	The Regent Group, Inc.	Ms. Patricia E. Andres	Ms. Liz Boyatt	Mrs. J.D. Cody	Inc.	Anita and Albert Goldin	Ms. Donna S. Helm
PipeVine, Inc.	Thieneman-Seitz Builder, Inc.	Animal Crackers	Mr. Anthony C. Boyd	Mr. Randy and Ms. Christy Coe	Mrs. Sara S. Donohue	Dr. and Ms. Martyn A. Goldman	Susan and John Henderson
Mrs. and Mr. Richard J. Pontrich	Ms. Darlene B. Thomas	Alpha Chi Omega Alumna	Ms. Peggy A. Bradley	Mr. Nicholas Coleff	A.E. Dorris	Ms. Katheryne L. Goodman	Mrs. Lisa Herndon
Ms. Delores Pregliasco	Carol and Paul Tittel	Mrs. Don L. Arehart	Ms. Deanna Brady	Ms. M. Kathleen Coleman	Mr. Gary Drehmel	Pat Goodman	Jacqueline Hersh
Probation and Parole	Dr. Diane Tobin, Ph.D.	Bobbie and Charles Armes	Mr. John D. Branch	Ms. Maria D. Coleman-Noisin	Ms. Linda T. Drescher	Ms. Rhoda M. Goodman	Sonia and Howard Hess
Quinn Chapel A.M.E. Church	Trinity United Methodist Women	Art Industries, Inc.	Dan Branham	Mrs. Jonell Collier	Mrs. Riva Drutz	Ms. Pamela K. Goodwin	Virginia S. Hibbs
Pamela and James Ratterman	Ms. Janice A. Tucker	Holly and Jeffrey Ashley	Ms. Jean P. Branum	Communications Workers of	Mr. George E. Dudley	Mrs. Kathryn and Mr. Jack	Ms. Mary G. Higgins
Mrs. Lisa J. Reed	Mr. and Mrs. Terry W. Tyler	Ms. Diana L. Atwell	May Breaze	America	Donald Duncan	Gotting	Ms. Aurora A. Hildreth
Ms. Madeline C. Reno	United Way Crusade of Mercy	Mr. David S. Auspland	Ms. Blanche K. Brewer	Ms. Allysan S. Comstock	Ms. Barbara J. Dyer	Ms. Betty Grantz	Mrs. Karen P. Hiler
Ms. Patricia A. Richardson	Mary Valentine, M.D.	Mrs. William E. Bailey	Dr. and Mrs. McHenry Brewer	Julie Cook	Ms. Linda F. Dyer	Mr. and Mrs. Daniel Gray	Ms. Cheryl Hillenburg
Ms. Betty Rinker	Ms. Jennifer L. Vanellen	Ms. Nan Baker	Nina and Joe Brill	Ms. Betty J. Coombs	Ms. Carrie Jo East	Elisabeth Gray and John	Hispanic Latino Coalition, Inc.
Robert Lynn Company, Inc.	Ms. Patricia M. Varga	Balfour	Ms. Norma Brock	Mr. Charles Cooper	Eberle Construction, Inc.	VonderHaar	Margaret and Donald Hoben
Lois Roe	Ms. Susan and Mr. Gregory	Ms. Cheryl L Ballew	Mrs. Mary A. Brooks	Mr. Dave Cooper	Ms. Rebecca A. Edgerly	Ms. Diane S. Graybill	Mrs. Peggy Hoben
Mrs. June and Mr. William	Vlazny	Ms. Anne Banks	Ms. Beverly L. Brown	Harry and Frances Cooper	Mr. and Ms. George R. Edwards	Paul and Dana Greathouse	Mr. James G. Hodge, Attorney
Rogers	Ms. Sharon F. Wallace	Mr. and Mrs. Norman B. Banks	Mr. Fred Brown	Ms. Mary L. Cooper	Mrs. Deborah Ehrig	Dr. Fay E. Greckel	Mr. Mike Hogan
Ms. Michele D. Rowe	Dr. and Mrs. Norton G. Waterman	Mr. and Ms. Jeffrey C. Barbour	Mr. Isaac Brown	Mr. Robert M. Coots	Ms. Kathryn M. Elkin	Mary Lynn and Douglas Green	Ms. Pamela Holbrook
Mrs. Lynn B. Rueff	Ms. Sherry E. Watson	Ms. Nancy Barnes	Mr. and Mrs. Robert J. Bruce	Ms. Mary E. Corbett	Ms. Sarah and Mr. Dale Erny	Ms. Pam Greenwell	Mr. Billy Holloway
Mrs. Kaelin M. Rybak	Mrs. Alice and Mr. Carl Weigel	William and Marcia Barth	Ms. Kathleen M. Bryant	Mrs. Kathy Cottner	Ms. Barba Evans	Ms. Marlene M. Grissom	Mrs. Darlene R. Holzbach
Ms. Tina Saberton	Mrs. Joanne M. Weis	Ms. Carolyn Jeanne Beard	Grey and Brian Buchanan	Mr. Russell H. Cotton	Mrs. Sally Fangman	Ms. Martha Groene	Ms. Mary Kay Honchell
Sanctuary, Inc.	Dona F. Wells	Ms. Ursula M. Beatty	Dr. Alta M. Burnett and	Courier-Journal Newspaper	Georgia and Patrick Farnan	Clara D. Gruneisen	Mrs. Marty Hoover
R. Jemian and M. Satterwhite	Sheila and Patrick Welsh	Ms. Paula Beck	Dr. Crump W. Baker	Ms. Kelly Cousins and	Ms. Venus Fasce	Guardian Industries	Mr. William C. Hord
Ms. Gail M. Schank	Ms. Anne Wilhelmus	Mrs. Joy Begley	Sister Mary Burns	Mr. Eric Crenshaw	Mr. Charles Fenwick	Ms. Linda Guss	Ms. Valorie Horn
Ms. Connie Schilffarth	Mr. and Mrs. Charles D. Willett	Ms. Sara L. Bein	Ms. Cynthia Buttorff	Mr. C. Wayne Couvillion	Ms. Sharon G. Finlinson	Ms. Marian Haag	Ms. Betty C. Hornback
Lisa Schmidt	Willis Stewart Lodge 224 F & AM	Ms. Martha G. Bell	Mrs. Beverly A. Byrum and	Ms. Ashley E. Cox	Mrs. Estella L. Fisher	Ms. Angie Haegler	Helen Hornback
Mrs. Ellen H. Shapira	Orme Wilson, III	Ms. Ann K. Benfield	Dr. Henry B. Byrum	Ms. Deborah Cox	Dr. Elizabeth M. Fitzgerald	Ms. Karen Hale	Ms. Sharise Horne
Mrs. and Mr. Steve Shapiro	Mrs. and Mr. David F. Winkler	Ms. Estelle Benner	Mr. and Mrs. Jeffrey P.	Ms. Darla Crabtree	Ms. Mary Catherine Flege	Karen and Andrew Hall	Kathryn Horneffer
Mrs. Ellen B. Shelby	Bob Woehrle	Barbara and Tom Bennett	Callen, M.D.	Ms. Lena Crabtree	Mr. Arthur H. Fleischaker	Ronald L. Hall	Ms. Nancy Horsey
Ms. Sally L. Shown	Women in Networking	Ms. Marilyn J. Benock	Ms. Dolores Campbell	Ms. Brandi Vittitow and	Ms. Kara Fogle	Roger and Loraine Halloran	Ms. Stephanie Horton
Ms. Patricia Shryock	Ms. Virginia L. Woodward	Mrs. and Mr. Lee Benovitz	Ms. Barbara Carpenter	Mr. Brian Crawford	Mr. and Mrs. Ray L. Forst	Ms. Holly S. Hamilton	Mr. William J. Houston
Bethany L. Simpson	David Wooldridge	Mrs. Judith Bensinger	Ms. Mary Carter	Ms. Evelyn Crooks	Ms. Joan Foster	Ms. Loretta Hamilton	Diane and Ronald Howell
Mr. and Mrs. William G. Simpson	Bobby and Nicki Yann	David R. Berman	Mrs. Sylvia B. Carter	John Cumbler	Ms. Tracey and Mr. Jeff Frcka	Mrs. Adele L. Hammel	Dorothy and Robert Huffman
Ms. Irene Sims	Ms. Edna K. Yarmuth	The Family of Mr. Paul L Berrier	Ms. Virginia Casey	Ms. Rhonda Curry	Ms. Bonnie L. Freeman	Mr. and Mrs. Fred S. Hammel	Ms. Carolyn Hulse
Dr. Terry L. Singer	Ms. Jane Younger	Beta Gamma Chi Omega	Soni Castleberry	Curves for Women	Ms. Colsaria Freeman	Ms. Cinda L. Harbeson	Hume Pharmacy
M. Louise and Michael Slaven		Mrs. Marcy G. Beyer	Ms. Lisa K. Cates	Ms. Donna R. Cusick	Ms. Allison Froyd	Mrs. Marion H. Harcourt	Indiana Coalition Against
Robert Slosberg	The Circle of Trust under \$100	Ruth Billings and Charles Caudill	Ms. Pam Catlett	Mary E. Cyran	Ms. Geneva and Mr. James Fry	Mrs. Sandy Hardee	Domestic Violence
Ms. Catherine G. Smith	3rd Street Gallery, Inc.	Mr. Gerald Birschbach	Ms. Linda W. Cauble	Ms. Betty Dabney Brown	Margaret Gage	Ms. Sarah Hardy	Michelle L. Jacobs
Ms. Mary E. Smith	Anonymous	Mr. Richard C. Blackwell	Mrs. Betsy O. Chandler	Ms. Karen Dahlem	Nancy Gall-Clayton	Mrs. Julia and Mr. Michael	Ms. Sherry Jasper
Reginald P. Smith	Anonymous	Ms. Cheryl A. Blandford	Ms. Frances Cheek	Ms. Dixie Daugherty	Ms. Jenifer Gamble	Harper	Ms. Carla Jeffers
Smith-McKenney Company, Inc.	AAPER Alcohol	Ms. Linda K. Bledsoe	Ms. Sherrie M. Childers	Mr. Paul R. Davidson, Jr.	Paul and Teresa Gamble	Mrs. Sarah L. Harris	Jefferson County Adult Education
Spalding University	Mr. and Mrs. Leonard Abraham	Mr. Joseph A. Blitzko	Ms. Sallie S. Childs	Bret Davies	Mr. Virgil Garness	Brenda G. Hart	Ms. Margaret Jenkins

Mr. Dan D. Johnson	Louisville Waterfront Development	National Association R.R. Business Women	Nancy and Gordon Ragan	Ms. Barbara Sharpsteen	Ms. Naomi R. Terry	Avalon White
Judy Johnson			Ms. Virginia Raley	Ms. Anetta Shaw and Mr. Chris Maguire	Ms. Paula M. Test	Ms. Glenda White
Ms. Kristen A. Johnson	Ms. Shirley J. Lowry	Ms. Nikole Neidiffer	Ms. Pamela Rankin		Ms. Charlotte S. Tharp	Ms. Sherri Whitlow
Mrs. Doris M. Jones	Lunch Bunch	Janice and Harry Netherland	Vickie Ransom	Ms. Dana Sheeley	Nancy Theriot	Mr. and Mrs. Byron Wilborn
Ms. Kathy Jones	Sallie M. Manassah	NICU and NBN UofL Hospital	Mrs. Nancy O. Rapson	Ms. Carolyn M. Shelby	Ms. Patricia Thompson	Wild and Woolly Video
Mr. and Mrs. Leroy Joseph, Jr.	Mr. and Mrs. Sal Marino	Ms. Anita F. Nieder	Mrs. Margaret Read	Shelby Masonic Lodge #662	Ms. Shirley Thurman	Ms. Beth Wilkerson
Mr. Paul A. Kaelin	Ms. Rebecca G. Marrow	Ms. Beverely Niles	Ms. Ellen and Mr. Robert Reed	Angela and Brian Shelman	Ms. Nancy J. Tierney	Mr. and Mrs. Jack Will
Kappa Delta Sorority - Alpha Xi Chapter	Mrs. Nevenka W. Martinovic	Mr. Ron Noel	Ms. Sarah A. Reed	Mr. Erwin A. Sherman	Ms. Priscilla Toler	Ms. Catherine Williams
David K. Karem	Ms. Margaret A. Mason	Ms. Kathy Nolan	Helen and J. Don Renneisen	Ruth and Wayne Sherrow	TOPS #536	Ms. Deborah S. Williams
Cheryl Karp	Masuhr International Marketing, Inc.	Ms. Carrie Norris	Ms. Jacqueline K. Reynolds	Ms. Kathy and Mr. John Shields	Ms. Claris J. Udd	Ms. Viola Williams
Ms. Lisa Karsner	Mr. and Mrs. Richard Matheny	Ms. Kathy Norris	Ms. Marguerite Rhodes	Ms. Cynthia Shipe	Ms. Martha F. Underwood	Ms. Sherry Wilson
Ms. Wendy Keenan	Ms. Diane M. Mattingly	Mrs. Julia C. O'Brien	Mrs. Nancy G. Rhodes	Shirley Smith-Pointer & Company	Underwriters Safety & Claims Inc.	Ms. T.M. Wilson
Gloria and Art Kemper-O'Neil	Ms. Lalla O'Bryan	Ms. Sally and Lawrence Rhodes	Sally and Lawrence Rhodes	Bobby Shore	United Way of San Diego County	Ms. Frances B. Wirth
Mr. J. Bradford Kent	Dr. and Mrs. Edward N. Maxwell	Mr. and Mrs. Michael O'Connell	Mr. R. Michael Ricketts	Mrs. June Sievert	Ursuline Society and Academy of Education	Dr. Richard S. Wolf
Kentucky Bluegrass Doll Club	Valerie and Norman Mayer	Ms. Jill C. O'Daniel	River City Street Rods	Mrs. Libbie S. Simons		Dr. and Mrs. Thomas P. Wolf
Kentucky Correctional Institution for Women	Ms. Lisa Mazzorato-Watson	Mr. and Mrs. Joseph J. O'Donnell	Ms. Martha A. Robinson	Mr. Michael Sims	Ms. Peggy L. Utz	Ms. Anne S. Wood
Kentucky State District Council of Carpenters	Mr. Michael McAuffe	Mr. Sean O'Leary	William and Donna Robinson	Ms. Jennifer Skaggs	Valley Women's Club	Ms. Jo Ann Woolfolk
Mary D. Khoshnood	Alice and George M. McCall	Ms. M. Jane O'Neill	Mr. Vincent J. Robison	Mary Jo Slahta	Ms. Andrea E. Vance	Mrs. Patricia R. Wrege
Ms. Ardis E. Kimmel	Mrs. Vicki and Mr. Philip McCombs	Ms. Mary Ann Ogle	Ms. Patricia Roehm	Dakota Smith	Ms. Mary Vanderhaar	Mr. Joseph S. Wright
Mr. Michael J. Kimmel	Ms. Carrie McGee	Mrs. Alfred W. Olvey, Jr.	Roman Catholic Bishop of Louisville	Mrs. Ellen and Mr. Richard Smith	Cliff and Bonnie Vatter	Ms. Thelma G. Wyland
Mr. and Mrs. Bruce H. Kinloch	John McGinnis	Mrs. Goldye L. Opper	Ms. Carla Roper	Gary Smith	Mrs. and Mr. Tom E. Vernizzi	Ms. Marjorie Wyrick
Mrs. Beverly A. Klein	Jolie and Bryan McGrew	Our Lady of Consolation	Sue Rosen	Mrs. Katherine J. Smith	John and Jeannie Vezeau	Patricia York
Sharon Klein	Ms. Martha W. McKenna	Ms. Winona Palmgreen	Fanny and Irvin Rosenbaum	Mr. Kenneth Smith	Debbie Vial	Ms. Joyce Young
Margot and David Kling	Mr. and Mrs. John V. McReynolds	Parents without Partners	Ms. Shanna Rucker	Ms. Monica L. Smith	Deborah and Steven Vice	Ms. Peggy Young
Sandra and Kenneth Klotz	Ms. Ruth E. Meers	Mr. Creston Parker	Mrs. Albert V. Rudd	Ms. Rita Smith	Ms. Geneva Vice	Mr. Robin L. Young
Ms. Susan C. Kocher	Mr. and Mrs. Barry Meier	Ms. Ivola Parker	Ms. Marcella E. Rumpel	Mr. W. R. Smith	Ms. Linda Voss	Mr. Mark A. Zimmerman
Ms. Barbara Koehl	Ms. Donna M. Metcalf	Ms. Marsha J. Parker	Mrs. Linda Ryan	Dr. William Smock	Ms. Rose Ann Wagner	Dr. Martin Zukof
Mr. Barry Kornstein	Ms. Donna M. Metcalf	Mrs. Barbara G. Pass	Ms. Esther M. Sabo	Ms. Linda A. Soucek	Ms. Cate Walden	
Kathy and Joe Kremer	Mr. James W. Metcalf and Mrs. Sharon Metcalf	Ms. Donna Patterson	Mrs. Felice C. Sachs	Ms. Jo Spencer	Ms. Margaret L. Walker	
KSHCA	Metro Pinbusters League	Ms. Nancy L. Percy	Ms. Betty Sallee	Spencerian College	Mr. Thomas C. Walker	
Susan and Steve Kute & Family	Ms. Rebecca S. Metzmeier	Diane Peckinpaugh	Mr. Arnie Saltsman	Ms. Karin Speth	Dr. Sherri L. Wallace	
Mr. C. Prewitt Lane, Jr.	Mr. and Mrs. R. Kenyon Meyer	Barbara and Rick Penick	Ms. Lorri Samuels	Springdale Presbyterian Church	Ms. Tamara J. Wallace	
Mr. Jeffrey L. Layman	Teresa J. Meyer	Mr. and Mrs. Mike Pepa	Stephanie and Chuck Sarasoha	St. James Church	Mr. and Mrs. William Walsh, III	
Ms. Carol S. Layne	Betty and Edwin Meyers	M. Peskura	Mrs. Allyn M. Schadt	St. Marks United Church of Christ	Ms. Eydie Walters	
Ms. Catherine L. Lechleiter	Janice and Christopher Michno	Mr. and Mrs. Larry J. Petersen	Ms. Paula and Mr. Paul Schell	St. Stephen Baptist Church	Mrs. Sue Ann Warms	
Mr. and Mrs. David H. Lee	Mrs. Margaret and Mr. Jerry Miller	Mr. and Mrs. John Phelps	Ms. Mary E. Schmitt	Ms. Martha Stach	Ms. Laura Warren	
Ms. Jill L. Leonard	Ms. Lynn E. Miller	Pi Beta Phi	Ms. Mary Schneider	Laura and Sean Stallard	Dr. and Mrs. Edward Warrick, Jr.	
Mr. Sonny Leonberger	Ms. Beverly Moore	Mrs. Janice Picou	Ms. Susan H. Schroering	Mrs. Linda Stewart and Mr. Jack D. Stewart	Ms. Mildred Watkins	
Ms. Nina Leslie	Ms. Lynn E. Miller	Ms. Kay Pillow	Ms. Elizabeth R. Schulte	Ms. Stephanie Stidham	Ms. Susan Weatherby	
Dr. and Mrs. Ronald L. Levine	Ms. Lynn E. Miller	Pipe Vine, Inc.	Mr. and Mrs. Lee A. Schulz	Mrs. Wendy Stivers	Cynthia Wedding	
Mrs. Selma B. Levy	Ms. Beverly Moore	Ms. Michelle Pitird	Ms. Janet L. Schureck	Ms. Carrie Storms	Ms. Barbara A. Weihe	
Mr. Michael Lewis	Billy D. Morgan	Mrs. Martha M. Plager	Dr. John Schwab	Deborah and Thomas Stumler	Mary and David Weingarten	
Liberty High School	Ms. Marjorie Morrison	Mr. Thomas J. Podbielski	Mr. Walter J. Schwartz	Mrs. Marcia J. Sweeney	Ms. Brenda Wells	
James B. Lincoln	Mrs. Margaret F. Moseson	Ms. Allison Pogue	Ms. Christy Scott	Ms. Ann W. Swintosky	Ms. Debby Wenger	
Mr. Eric C. Lindquist	Irene Mosvold	Ms. Monde Polley	Ms. Lori K. Scott	Eunice and Arnold Switow	Ms. Lee F. Werschulz	
Ms. Monica L. Little	Ms. Charlotte Mullen	Ms. Kathleen Poole	Mrs. Bobbie Scowden	Ms. Sue Szabo	Wesley Manor	
Ms. Sherri Locke	Ms. Charlotte Mullen	Mrs. and Mr. Bill Postill	Mrs. Judy C. Seebold	Ms. Lisa Tabler	Ms. June Wessel	
Louisville Real Estate Development Co.	Ms. Rebecca B. Murphy	Ms. Donna B. Pottinger	Mrs. Inez Segell	Ms. Martha M. Tafel	Dr. Andrew and Mrs. Bradley West	
	Ms. Mary Murray	Presbyterian Women	Mrs. and Mr. Bill V. Seiller	Mrs. Sally and Mr. J. Dan Talbott	Whayne Supply Company	
	Ms. Jennifer R. Mutwalli	Ms. Nancy Price	Ms. Cornelia Atherton Serpell	Ms. Martha C. Taylor	Ms. Ellen Wheeler	
	Ms. Karen Myers	Ms. Paula Pugh	Ms. Joyce Seymour	Patricia D. Taylor		
	Mr. and Mrs. Michael Nabicht	Ms. Tamara L. Pugh				

Special Thanks

The Center for Women and Families would like to extend a special thanks to our in-kind donors who donate crucial goods and services.

360 Designs, LLC
 A Class Act
 Anonymous
 Anonymous
 Ms. Kathy Abbott
 Mary Lou Able
 Ms. Kathy Abrams-Smith
 Actors Theater Development Board
 Actors Theatre of Louisville
 Ms. Deanna Adam
 Leslie and Chuck Adams
 Linda Adams
 Ms. Susan Adams
 Adath Jeshurun Synagogue
 Preschool
 ADEMCO
 Mr. Michael M. Adkins
 Michelle Adwell
 AEGON Corporation
 Ahead Human Resources, Inc.
 Ms. Marcia Ahgee
 Vickie Akridge
 Mrs. Frances N. Alden and
 Mr. William O. Alden
 Ms. Margaret J. Alexander
 Stephanie Alford
 Ms. Marcia Algee
 Amina Ali
 Allegra Print and Imaging
 Dee Allen
 Florence Allen
 Ms. Janice Allen
 Maydie and Nolen Allen
 Ms. Yolanda Allen
 Ms. Sheri Allison
 Ms. Elaine Altman
 Altria Group, Inc.
 Patricia Alvey
 Ms. Nancy Amlung
 Amy & Co. Salon
 Ms. Carol T. Anderson
 Ms. Modestine Anderson
 Ms. Phyllis Anderson
 Shirley Anderson
 Ms. Andrea Andrews
 Ms. Suzanne Andriot
 Mr. Dave Androws
 Anonymous
 Chad and Jena Ansert
 Mr. and Mrs. Ronald L. Ansert
 Anthem Blue Cross and Blue Shield
 Arby's
 Archdiocese of Louisville
 Judith Arendt

Dana Armstrong
 Art Emporium
 Arned Arter
 Melissa Atkinson
 Ms. Sheila Atkinson
 Atria Communities, Inc.
 Mary Austin
 AV Home Solutions
 P.R. Avis
 Jennifer Ayers
 Azalea Restaurant
 Ms. Peggy Baas
 Back in Motion Chiropractic
 Ms. Paula Bader
 Dr. Barbara M. Baker
 Ms. Lisa Baker
 Mark Baker
 Mr. Riche Ballard
 Tracey Ballard
 BALLARDSVILLE BAPTIST CHURCH
 Ms. Kay Ballenger
 Ms. Cheryl L. Ballew
 Roger Banks
 Ms. Bridgette Bankston
 Mr. Gene Bankston
 Baptist East Milestone
 Bargain Supply Company, Inc.
 Ms. Shonda Barlow
 Sally Barman
 Julie Barmore
 Ed and Charlene Barnes
 Ms. Kim Barnes
 Barnes and Noble
 Ms. Ebony Barnett
 Ms. Jackie Barnett
 Alicon K. Barney
 C.D. Baron
 Nancy A. Barr
 Mr. Curtis L. Barrett
 Ms. Karen Barrett
 Mrs. Kimberly T. Barrie
 Julia Barry
 Mrs. Melissa and Mr. Tim Barry
 Judith Bass
 Ms. Neva Bast
 Ms. Cynthia C. Bates
 Mr. Dennis E. Bates
 Mr. Ronald Bates
 Bates Elementary
 Ms. Mary Bates-Bey
 Carla Bauer
 Ms. Debbie Bauer
 Ms. Lummie Bauer
 Ms. Cindy Baughman

Bautista Associates
 Mr. Warner L. Baxter
 Betty W. Baye'
 Ms. Terri Beamus
 Gary Beard
 Ms. Cindi Bearden
 Beauty First
 Ms. Kathie Bechtler
 Sandy Beckhart
 Beechmont Woman's Club
 Mr. Tim Beirne
 Lawrence H. Belanger
 Ms. Carolyn S. Bell
 Clemon Bell
 Ms. Kathleen E. Bell
 Ms. Tori Bell
 Laura K. Belt
 Mr. Greg Belzley
 Shannon Bender
 Ms. Linda Bendorf
 H. Bennett
 Ms. Sharon K. Bennett
 Mrs. and Mr. Lee Benovitz
 Ms. Pat Bensinger
 Michele S. Benzing
 Hubert Bergen
 Sonia Bergmann
 Kristina Berry
 Ms. Robin Berry
 D.A. Bessler
 Ms. Susan Besten
 Beta Sigma Phi - Gamma Master
 Chapter
 Beta Sigma Phi - Laurette Delta
 Beta Sigma Phi - Xi Beta Alpha
 Beta Sigma Phi City Council
 Bethany Lutheran Church
 Ms. Frankie Bibb
 Christian Bidwell
 Big Brothers/Big Sisters of
 Kentuckiana
 Ms. Yavonda Biggers
 Ms. Mary Catherine Bir
 Birthcare Network
 Ms. Jessica M. Bivens
 Mrs. Allen Blacketer
 Ms. Angela Blackman
 Ms. Cheryl A. Blandford
 Ms. Judy Blanford
 Blendex Company
 Ms. Cate Blomquist
 Denise Bloom
 Bluegrass Pallet Company
 Stephanie Blunk
 Marguerita Boards
 Ms. Amy Boarman
 Ms. Gail Bogle
 Anne Boham
 Erin Bohannon
 Cathy Bohler
 Tom Bohnert
 Deborah Bolton-Doll
 Mr. Anthony Bonner

Ms. Katherine E. Booker
 Ms. Wilcenda Booker
 Beverly Booth
 Margaret Borders
 Elaine and Donald Bornstein
 Louis F. Bosler
 Mr. Curtis Boster
 Brenda Boston
 Barbara Bouton
 Ms. Angela Bowen
 Jim Bowers
 Ms. Ruth M. Bowers
 Bowles Mattress Company
 Ms. Diana Boyd
 Ms. Stephanie Boyd
 Ms. Gladys Boykin
 BPW River City Inc
 Ms. Julie Brackett
 Michelle Bradley
 Ms. Margie Brady
 David and Dottie Brandon
 George Brangers
 Mr. Robert Brann
 Ms. Katye Brannon
 Brasch Barry General Contractors, Inc.
 Jewellene Bratcher
 May Breaze
 Kathleen Breitenstein
 Mr. John Brenner
 Donna Brewer
 Markena Brewer
 Ms. Tish Brewster
 Ms. Beverly Breyette
 Sarah V. Brian
 Ms. Shannon Briel
 Leslie Bright
 Evelyn Briney
 Ms. Barbara Brittain
 Ms. and Ms. Lisa Brizendine
 Ms. Debbie Broome
 Patsy Broughton
 Cessna H. Brown, III
 Mr. Chris Brown
 Ms. Jeanne Brown
 Ms. Meredith W. Brown
 Ms. Vickie Y. Brown
 Ms. Wanda W. Brown
 Brown & Williamson Tobacco
 Corporation
 Brown Forman Corporation
 David and Jane Browne
 Brownie Troop #503
 Brownie Troop #921
 Brownie Troop 1680
 Brownie Troop 966
 Brownsboro Hardware & Paint
 Mrs. Malenie Bruce
 Ms. Cara Brunk
 Ms. Linda Bryan
 Ms. Carolyn Bryant
 Jamie Bryant
 Grey and Brian Buchanan
 Ms. Susie Buchanan

Billie Buckley
 Ms. Susan Buckmasler
 Ms. Dana Bullitt
 LaTonya Bullitt
 Ms. Catherine Burch
 Ms. Jan Burch
 Ms. Linda T. Burch
 Susan Burch
 Christy Burden
 Ms. Anne Burdorf
 Jennifer Burnett
 Ms. Megan Burnett
 Julie Burns
 Martha Burns
 Mora Burns
 Raymona Burns
 Ms. Erin Burress
 Ms. Kay Burris
 Carrie Burton
 Business & Professional Women's
 Club of Kentucky
 Mr. Curtis Buster
 Stephanie Bustin
 Ms. Rochelle Butler
 Ms. Karen L. Bybee
 Tom Byers
 Ms. Jacqueline Byrd
 Katie Byrd
 Kim Byrd
 Ms. Carol Cadonic
 Caesars Indiana
 Ann M. Cain
 Audra Cain
 Dawn Cain
 Linda Caldwell
 Caldwell Tanks
 Cameron Mitchell Restaurants
 Ms. Donnell P. Campbell
 Neal Campbell
 Radine Campbell
 Misty Canary
 Della Cannon
 Jennie Cantrell
 Steve Carby
 Ms. Melissa Cardin
 Cardinal Club
 Ms. Pam Carlisle
 Carlisle Avenue Baptist Church
 Carlson Wagonlit Travel
 Shelley Carney
 Carraro's Art Print & Publishing Co.
 Ruth Carrico
 Stephanie Carroll
 Suzanne Carter
 Ms. Kristy Cartier
 Allyson Casada
 Ricky Cash
 Ms. Patti Cassetta
 Catholic Enrichment Center
 Cato
 Sue Causey
 Eileen Cease

Central Christian Church
 Central Presbyterian Church
 Ms. Victoria Chamberlain
 Ms. Deborah Chambers
 Chamhill & Quest Engineers
 Mr. Joe Champa
 John Chandler
 Ms. Sarah Chandler
 Ms. Heather Chaney
 Bonnie L. Chaplin
 Devra Chapman
 Ms. Wendy Chapman
 Charles P. Moorman Home
 for Women
 Ms. Christy Charlton
 Dr. Donn R. Chatham
 Ms. Devra Chatman
 Ms. Karen Chaudoin
 Check into Cash
 Ms. Louise D. Cherrie
 Ms. Kristin Chervenak
 Ms. Debbie Chesser
 Frances M. Chester
 Children's Orchard
 Chiropractic Neurology and
 Injury Center
 Dumas Chism
 Ms. Jane Chism
 Christ Church United Methodist
 Ms. Kendra Christmas
 City of Jeffersontown
 Ms. Anna Clark
 Marilyn Clark
 Ms. Marlene H. Clark
 Shamonda L. Clark
 Clark County Ext Homemakers
 Clark County REMC
 Clark Memorial Hospital
 Clarke American
 Clarksville Business Professional
 Women
 Ms. Jen Clasby
 Ms. Matilda Claybrooks
 Ms. Tequila Claybrooks
 Mr. and Mrs. Barry Cleary
 Ms. Jan Cleaver
 Joanna Clines
 Vicki Clore
 Coalition of Labor Union Women
 Ms. Donna Cobb
 Ms. Stacy Cohen
 Kim Cole
 Kay Coleman
 Ms. Carla Collins
 Rene Collins
 Talma Collins
 Colonels Uniform sand Ebroidery
 Henrietta Combs
 Kay Combs
 The Community Foundation of
 Louisville
 Pete and Terri Dallas
 Mr. Scott Dalton

CompuServices Unlimted Inc.
 Ms. Kimberly Condra
 Ms. Rose Condra
 Ms. Keisha Conley
 Nana Conley
 Ms. Beth Conn
 Karen Conner
 Ms. Lea Conrad
 Gregory Conway
 Ms. Erika Cook
 Ms. Regina Cook-Pfeiffer
 Marge Cooke
 Ron Cooke
 Mary Cooksey
 Ms. Mary L. Coomes
 Dottie Coones
 Mr. Pat Coons
 Ms. Carla Cooper
 Mr. Charles F. Cooper
 Joyceleen Cooper
 Ms. Marty Cooper
 Mary Cooper
 Rachel Cooper
 Ms. Sandra Cooper
 Cassandra Corbett
 Ms. Charlotte Corder
 Stephaie Cordery
 John Couch
 Ms. Louise Coughlan
 Karen Courtney
 Courtyard by Marriott
 Patti Coury
 Ruth A. Cowling
 Christy Cox
 Ms. Dianne Cox
 Ms. Julie M. Cox
 Kimberly Cox
 CPCU Society
 Ms. M. Crady
 Ms. Vickie Craycroft
 Gary Creamer
 Crescent Hill Woman's Club
 Ms. Ann Crisp
 Ms. Lisa Crockett
 Denise Cross
 Emily Cross
 Jean Cross
 Ms. Gwen Croucher
 Sharon Crow
 Jon Crumbie
 Ms. Andrea Culliton
 Mary and Barry Cummings
 Ms. Sandra L. Cundiff
 Ms. Delores Cunitz
 Ms. Sarah Lynn Cunningham
 Sandra Curtis
 Ms. Terri Curtis
 Ms. Shelby Cutler
 Ms. Janet Dabney
 Jennifer and Michael Dailey
 Pete and Terri Dallas
 Mr. Scott Dalton

Dr. Wendy C. Daly
 Ms. Celia Daniels
 Melissa Darby
 Sarah Darnell
 Shamie Dasgupta
 Cary Daugherty
 Ms. Dedra Daugherty
 Dianna Davidson
 Ms. Linda Davis
 Ms. Mary Davis
 Mary Davis
 Vickie Davis
 Ms. Pam Dawley
 Ms. Rhonda Day
 Deer Park Neighborhood
 Associations
 Karen DeFazio
 Mrs. Janice Y. DeGaris
 Mr. Arthur Deich
 Ms. Maggie and Mr. Bill Deleuil
 Deliverance Ministers Inc
 Eddie Denzik
 DePauw Thrift Shop
 Ms. Rose Marie DeSantis
 Design-Build Partners
 Ms. Irene DeVito
 Ms. Kelley Dew
 Ms. Lisa Dickens
 Ms. Rachael E. Didat
 Ms. Christy Didio
 Ms. Tracey Diebold
 Ms. Connie DiFranco
 Dillard's
 Ms. Susan DiLuca
 Diana Dinicola
 Larry Dison
 Ms. Anita Doan
 Ms. Barbara Dodds
 J.L. Doerr
 Robert H. Doggett
 Domain
 Olga Donnelly
 Emily Donnett
 Ms. Judy Douglas
 Andrew Downey
 Ms. Rebecca Doyle
 Mr. John A. Dreier
 Ms. Laura Drew
 Rebecca Driskell
 Ms. Karla Drover
 Sally Duane
 Ms. Pennie DuBarry
 Heather Dubourg
 Linda DuBourg
 Valerie Ducas
 Kathy Dunn
 Mr. Michael Dunn
 Amy Durham
 Robert Durham
 Sharon M. Dyer
 Kenneth Earley
 Ms. Carrie Jo East

East Louisville Animal Hospital Karl Eastman Mr. Todd Eastridge Eastside Christian Church Judy Eberenz Maria Eberle John Eckerle Malana K. Eckert Carol Edeline Edenside Christian Church Ms. Ramona L. Edlin Kyle Edwards Mr. Warren Edwards Ms. Carol Egan Ms. Nicole Egnor Elevator Technical Services (ETS) Mr. Hiram Ely III Emazing.Com Embellishments Sally Embry Eminence Homemakers Kathy Emmitsberger Ms. Pat End Ms. Michelle England Ms. Frances E. Englander and Mr. Perry S. Jacobs Mr. Jim Engler Enterprise Solutions, Inc. Episcopal Church Home Estate of Agatha Hall Estate of Virginia Tandy Eta Omega Chapter Ms. Cynthia R. Etghana Wielia Etienne Evaluation and Consulting Mr. Don Evans Mr. Jim Evans Ms. Pamela Evans Ms. Diane Everse Frankie Eversole Ms. Ann Ezell Beth Fach Ms. Jan Fadel Brent Fallenstein Ms. Renee Famiglietta Ms. Catherine Fannin Ms. Belinda Y. Fant Ms. Faye Faulkenberg Dana Felston Lt. Steve Fenster Steve Fenster Mr. Charles Fenwick Sheri Ferguson Fern Creek Traditional High School Fern Creek Women's Club Mr. Tom Ferree Mr. Pedro M. Ferreira Nancy and Lonnie Fetz Ms. Patria G. Fielding Angela Fields Ms. Barbara Fields Denise Fields	Ms. Texanna Fields Vanessa C. Fields Wendy Fields Audrey Fifer Fifth Quarter Ms. Rose Marie Filburn Finishing Plus, Inc. Ms. Marianne Finke Amy Finkelstein Ms. Connie Firman Ms. Ginny First Deborah L. Fischer Drew Fischer Ms. Lynn Fischer Ms. Jennifer Fitzgerald Pam Fleck Dr. Rita Fleming James Flowers Mrs. Margaret C. Flowers Ms. Milly Flowers Floyd County "10" Homemakers Club Floyd County Health Dept. Floyd Memorial Hospital & Health Services Sheila Fonner Pamela Ford Rebecca Thomas Ford Ms. Virginia Forest Forest Baptist Church Diane Forler Effe Foster Fourth Avenue United Methodist Church Ms. Diana Fox Fox 41 WDRB Amber Fox-Young Frances Lee Jasper Oriental Rugs, Inc. Ms. Kim Frankethal Ms. Barbara H. Franklin Ms. Judy Franklin Ms. Mary Franklin Beverly Frazier Pam Frazier Rich Frazier Ms. Alex Freeman Ms. Colsaria Freeman Sherrie Freeman Bischof Mr. Jim French Matt French Friends of the Floyd County Library Friendship Club Max Froelich Ms. Janice Frost Mr. Davie R. Fry Margaret Fry Stephen L. Fugitte Leslie Fuller Emily and Ken Fultz Fun-Masters, Inc. Ms. Stephanie Furnish GAB Robins	Ms. Susan Gabbard Russell Gabbraith Penny Gailor Ms. Jan Gaines Ms. Kathy Gallaher Richard Gallahue The Galt House Ms. Jenifer Gamble Ms. Meg Gamero Lanita Gammel Penny J. Gardiner Helen B. Gardner Ms. Tywona Gardner Ms. and Mr. Charles Garmon Ms. Rebecca L. Garrett Katherine P. Garrison Ms. Lisa Garvey Sherri Gary Taryn Gathof GE Former Military Officers/Veterans Group Ms. Tamala Geftos Nancy Geiger Ms. Anne Geist General Eccentric Clothing Paula George Ms. Amy E. Gerstle Charles Getzendiner Amber Giacalone Sr. Deborah Giannone Shelly S. Gibson Ms. Mary Gilbert Mr. Mike Gilkey Valerie Gillenwater Ms. Cindy Gilliam Girl Scout Troop #1386 Girl Scout Troop 1003 Girl Scout Troop 1006 Girl Scout Troop 1434 Susan Glaser Glassworks Rebecca Glauber Mr. James Glin Ms. Jana Godwin Julia Goff Mr. Troy Goin Ms. Bobbi Goldman Sara Lee Goldstein Tiera Gonzalez Ms. Ginny Goodman Pat Goodman Shawn Goodpaster Henry Goodrow Ms. Alyson Goodwin Alicia Gorden Ronda Gordon Susan Gorin Rob Gorstein Ms. Felicia Gough Ms. Donna Gozia Grace Lutheran Church Ameerah Granger	Ms. Mildred Grant Grant Line School Ms. Mary J. Grantz Mr. Joe Graves Jean Grawemeyer Blanche E. Gray Downey M. Gray Ms. Laura Gray Ms. Marcia L. Graybeal and Mr. Joe Souza Greater Friendship Baptist Church Ms. Pat Green Mr. Ron Green Green Tree Mall Ms. Mary A. Greenamyer Linda Greer Tina Greer Ms. Patricia Gregg Aubrey E. Gregory Ms. Stacy Greive Ms. Amy Grenough Ken Griffin Mr. John Griffith Charles Gross Ms. Janetta Gross Elizabeth Grossi Ms. Mary B. Gruebbel Rudy Guerrero Mr. Micah Guilfoil Debbie Gunning Ms. Sandy Gutermuth Jennifer Habberfield Denise Hageman Molly Hagman Mr. Tom Hahn Ms. Carol Haight Ms. Deborah Haley Angela Hall Mr. and Mrs. Edwin M. Hall, Jr. Whitney Hall Ginny Hallum Ms. Holly S. Hamilton Ms. Linda Hamilton Stacie Hamilton Nance Ms. Margaret Hammond Ms. Heather R. Hampton Krista Hampton Mary T. Hansford Ms. Jayne Harbin Kathy Hardin Ms. Moncia Hardin Ms. Karen Harding Elizabeth Hardy Ms. Janice Hardy John B. Hardy Ms. Sarah Hardy Ms. Shirley Hardy Ms. Debbie Hare Ms. Ann L. Hargis Jennifer Harlan Marie V. Harmon	Ms. Lisa Harper Ms. Sally Harper Ms. Denise Harper Angel Joyce Harpole Denise Harris Joanne Harris Ms. Karen Harris Ms. Kim Harris Margaret Harris Stephani Harris Ms. Susan Harris Harrods Creek United Methodist Ministry Mr. Ben Hart Justina Hartell Harvest Films Harvey Browne Presbyterian Church James R. Hatfield Ms. Fay Haupt Ms. Kelly Haupt Annette Hawkins Ms. Arline Hawkins Barbara J. Hawkins Hawley-Cooke Booksellers Jamie Haworth Ms. Angela Hayden Ms. Frances D. Hayden Jack Hayden Darlene Hayes Terry Hayes Lorie Hazelwood Frances D. Head Healthcare Recoveries Ms. Pamela Heatherly Betty L. Hedges Mr. John Hedges Elaine Heerlein Marilyn Heil-Weber Dave Heine Heine Brothers' Coffee Ms. Linda Heitzman Carol Heizer Nina Heizer Regina Hellens Mr. and Mrs. Michael Helline Michael Hellins Ms. Brenda Henderson and Mr. Odell Henderson Cassandra Henderson Odell Henderson Gregory A. Henderzahn Ms. Barbara Hendrick Ms. Christy Hendricks Ms. Amanda Henle Carolyn Hennessy Ms. Rita Hennig Ms. Lori Henninger Barbara Henry Ms. Doris G. Henry Debra and Steve Hensley Telina Henson	Heritage Environmental Mrs. Anne Hernandez and Mr. Felipe Hernandez Mr. Tom Herndon Magi Herron V. Hettel Louis Hettinger Pam Hettinger Gwyn Hetzel Vera Lee Hicks Roger D. Higdon Ms. Lisa Higgins Ms. Sabrina Higgins Ms. Denise Hill Judith Hill Hillview Barber Shop Mandy E. Himmelheber Kate Hinkle Ms. Cathy Hinko Mrs. Peggy Hoben Ms. Ann Hodapp Morehouse John F. Hodgson Ms. Sherri Hofmann Ms. Terri Hoge Betty Hogue Carver Holiday Inn Kelly Hollis Lorie Hollis Peter Holloway Robin Holloway Griffin William R. Holman, III Teresa Holmes Nancy Holt Rosie Holt Ms. Cheryl Holubar Holy Family School Holy Trinity Daisy Troop Roger Honchell Honey Creme Donuts Stacie Hope Connie W. Hopkins Deanna Hopper Charmagne Horn Cullan Hornaday Carolyn and Kevin Horsley Ms. Beth Hotz Rose Ann P. Howard Judy Howarth Pete Howell Earl and Pat Hubbuch Chris and Lisa Huber Seth Huberman Leroy Hudgins Christopher Hudson Tammy Huff Worsham Ms. Paula Huffman Mr. Gary Huffman and Mrs. Robin Huffman Ms. Shawn Huffman Angel Hughes Humana Health Plans Humana Inc.	Ms. Jane Humphreys Joan Hundley Ms. Estella Hunt Ms. Gretchen Hunt Ms. Carrie Hunter Sharon A. Hunter Ms. Thelma Hunter Ms. Ann Hurst Hurstbourne Christian Church Bev Hurt Ms. Gina Hurt Ms. Cathie Hutchens Katharine Hutson Ms. Karen Hutti Hyatt Regency of Louisville Ms. Diana Ilano Sarah Iliff Linda Ilnick Jodie Imel Indiana State Police Indiana University Southeast Ms. Lora Ion Wendy Ion William M. Irion Ms. Anna L. Irvin Anna M. Irvin Mr. Bruce Irvin, Sr. Jonette Irvin Wanda D. Irvin-White Samantha Isacoff Ms. Kelly Ising Ms. Angela Jackson Clarence A. Jackson La'Monica Y. Jackson Ms. Sarah Jackson Ms. Sandra M. Jackson Ms. Shanell Jackson Stephani Jacobi Ms. Deb S. Janes Ms. Linda Janes Ms. Valarie Jansing Ms. Kathy A. Jarvi Ms. Sherry Jasper Thomas Jaussaud Helen Jayet Rob and Betsy Jefferson Jefferson Community College Jefferson County 4-H - Highview Helping Hands Jefferson County Circuit Court Clerk's Office Jefferson County Clerk - Employees' Charity Fund Elizabeth Jenkins Rep. Joni L. Jenkins Misty Jensen Ms. Stephanie Jensen Jerry Heston Hairdressing Mr. James T. Jewell MD Jeff Jewell Jewish Hospital Corporation Jewish Hospital VNA	Sharon Jimmerson Tracy L. Joe Christine Johnson Denille Johnson Ms. Laura L. Johnson Mark Johnson Nichola Johnson Rachelle Johnson Ms. Sherri Johnson Ms. Susan Johnson Ms. Sylvia A. Johnson Virginia Jolly Eddie Jones Mr. and Mrs. Jason Jones Jason Jones Ms. Kristie Jones Mr. Merlin Jones Ms. Mildred Jones Ms. Noelle Jones Stephanie Jordan Ms. Catherine Joret Junior Girl Scout Troop 335 Paul Junker Ms. Linda Kaelin Susan Kahl Ms. Angie Kaiser Louis Kamber Leslie Kampschaezer James Kapp Mr. Stephen A. Karnes Ms. Chara Kassidier Michael Kauffmann Elisa Kaufman Michael Kayrouz Mr. and Mrs. Patrick Keating Ms. Alice B. Keeling Ms. Denise Keith Nancy C. Kelley Ms. Rachel C. Kelley Flora Kelly James Kelly Marquita Kelly Ms. Diane Kelton Kathy Kelton Mr. Brian Kelty Dawn Kely Keneseth Israel Preschool Ann Kennedy Debra Kennedy Susan Kennedy Ms. Deborah Kent Kent School of Social Work Kentuckiana Womens Life Underwriting Kentucky Bluegrass Doll Club Kentucky Center for Arts Kentucky Derby Festival Kentucky Derby Museum Kentucky Harvest Kentucky Harvest Kentucky Refugee Ministries Kentucky Refugee Ministries
--	--	--	---	--	---	---	--

Kentucky Seminole Club	Anthony Lavelly	Sandy Lyvers	Meijer, Inc.	Ms. Gwendolyn Murphy	Okolona Church of Christ	Holly Perry	Jacqueline R. Quarles
Kentucky Spinal Court Injury Research Center	Ms. Tina Lavender	Ms. Alexis Mack	Ms. Patty Meisel	Ms. Kristan S. Murphy	Old National Bank	Nicole Perry	Joseph R. Queen
Scott Kerr	Jennifer Lavis	Latasha Mack	Amanda Melcher	Ms. Regina L. Murphy	Ms. Ann Oldfather	Janet Peter	Cathy Quinlan
Ms. Jennifer M. Kessler	Karen Lawrence	Ms. Elizabeth D. Madden	Denise Meredith	Ms. Terra Murphy	Ms. Barbara Oliva	Ms. Carolyn Peters	Ms. Thomas L. Rabbeth, Jr.
Missy Key	Ms. Judy Lawson	Frenia and Terry Maddox	Dwayne Merilatt	Ms. Jean Murphy-Jacob	Amanda V. Oliver	Carol Peterson	Lynn Radford
KFC	Fidelia Layman	Laura Madrid	Tammy Merrick	Ms. Dedra Murray	Ms. Jeanne Oliver	Ramona Peyton	Sharon Radin
Ms. Rachel Kiefer	Rebecca Layton	Shannon Mahoney	Ms. Carolyn Merriweather	Toni Murray and J. Roger Dill	Ms. Sherry Osborne	Mary J. Pfeifer	Ms. Elaine Rahm
Crystal R. Kilgore	Lazarus - Oxmoor	Mr. James E. Maier	Kathryn Mershon	Ms. Susi Murray-Schmidt	Annette Ostrader	Ms. Kim Phelps	RailPro, Inc.
Robert Kimball	Beth Lee	Sandra Majors	Metro United Way	Ms. Dara Myers	Vivian W. Overall	Phi Mu (Bellarmine College Sorority)	Raley Chiropractic
S King	Ms. Elisa Lee	Julie Malone	Ms. Rebecca S. Metzmeier	Mr. Bruce Nall and Mrs. Janet Nall	Joanne Overcash	Phi Mu Fraternity	Pete Ramsey
Ms. Sharon King	Shearease N. Lee	Ms. Sheila Malone	Ms. Mindy Meurer	Patricia Nalley	Janet Overman	Phi Sigma Sigma	Maryann Rand
Susan King	Ms. Susan Lee	Ms. Darcy Maloney	Ms. Elise G. Meyer	Ms. Charlene Nannini	Mark Overstreet	Lori Phillips	Ms. Brenda S. Randall
Charlene K. Kinnard	John Leenerts	Lila Maness	Mr. and Ms. Howard Meyer	National Immigration Project of the National Lawye	Cindy Pablo	Ms. Regina Phillips	Mr. Marty Randall
Renee Kinnard	Cheryl Leet	Jana Mann	Leonard and Mary Lou Meyer	Ann Naville	Thomas A. Pace	Phillips Chapel C.M.E.	Stace Randall
Mrs. Murray Kinsman	Teresa Leet	Ms. Doris Manning	Mr. Victor Meyer	Albert A. Neighbors	Pacers & Racers, Inc.	Dody Phipps	Angela Rasco
Tony Kinzel	Mr. Stephen Lentini	Saundra Manning	Ms. Kathy Michals	William B. Neil	Ms. Crystal L. Palen	Mary Ann Pieper	Joni Rash
Ms. Madonna Kirby	Ms. Sandy Levoret	Manual High School, Marathon Service Station	Ms. Julie Michels	Elizabeth Nelson	Ms. Linda Palmer	Ms. Kim Pinnick	Ann Rawsdell
Judith Kirchner	Cara Lewis	Ms. Janet L. Margerum	Midwest Sprinkler Corp.	Patricia Nelson	Joanna Panning	Ms. Lizabeth Piper	Linda Ray
Mr. William Kirschbaum	Ms. Janet Lewis	Ms. Heidi Margulis	Cindy Miller	Regina Netheny	Ms. Eloise Parker	Ms. Lisa Pittman	Joseph A. Raymond
Ms. Tina Kiser	Marie Lewis	Jennifer Markuson	Ms. Danielle A. Miller	Neuteufel Family	Robin A. Parker	Pleasure Ridge Park Women's Club	Andrea Ream
Ms. Susan Klein	LG & E Energy	Mr. Thomas A. Marshall	Darcy Miller	Roy Neutz	Ms. Sara V. Parks	PNC Bank, Inc.	Rebekah Recktenwald
Sandra Kleinhenz	Charles E. Lichtefeld	Linda Martin	Debbie Miller	Mark Nevitt	Melissa and Ronald Parrino	Andrea Pollard	Mrs. Karen and Mr. Jeff Reece
Diana and David Klotz	Mrs. Colleen M. Liebert	Ms. Sharita Martin	Ms. Gale E. Miller	New Zion Baptist Church	Jean and Melissa Parrino	Ms. Natalie Pomeroy	Mr. Jerry W. Reed
Mr. Daniel Klueber	Lincoln Hills Christian Church - Benevolence Team	Ms. Valencia Martin	Ms. Melinda Miller	Jamie Newman	Ms. Carol Parrish	Ms. Christi Poor	Stacy Reed
Marie Sue Knabel	Dee Lind	Arden R. Martos	Michael Miller	Mary Ann Newton	Mr. and Mrs. Bob Parrott	Ms. Kary D. Poore	Robin Reese
Ronald L. Knust	Ms. Deborah J. Lindsey	Stephen Mason	Susan Miller	John C. Nichols	Gwen Parrott	Marie Porter	Amber Rego
Ms. Kristin Knuteson	Lysa Link	Ms. Asia Massey	Ms. Debbie Mills	Ms. Brenda Nichter	Noelle Parrott	Norma Porterfield	Nick Reiland
Mr. Michael and Ms. Joanna Koch	William J. Linker	Ms. Deborah Masterson	Sherran Mills	Mr. David Nicklas	Djenita Pasic	Portland United Methodist Center	Courtney Reisert
Kristina Kolb	Lionheart Gallery	Sharron Mathes	Donald B. Minnich	Ms. Wendy Niekamp	Edward A. Paskitti	Terry and Martha Poteet	Carolyn and John Reisert
Mr. Ken Kortas	Kelly O. Lippert	Bob Matson	Danielle Minnis	Jim Nieman	Mr. Bob Passmore	James S. Potter	Ms. Rebecca S. Reisert
Kosair Legionettes	Kelly O. Lippert	Mr. Lawrence Mattingly	Joan Moch	Dottie Nix	Ms. Pat Passmore	Ms. Teresa Potter	Jan Rempf
Ms. Sherri Kramer	Ms. Melanie Lipsey	Mrs. E.M. Maxfield	Mr. and Mrs. Stephen Mock	Maria C. Noa	Past Presidents Leadership Council	Mr. Everett L. Potts	Ms. Ruth Renaud
Jo Anne Kraus	Ms. Mattie Little	Norman Mayer	Mary Moller	Holly Nolan	Tammy Pate	Cindy Powell	Ms. Susan Renkes
Dr. Mitzi R. Krockover	Ms. Judy Lockard	Christina Mayes	Dawn Money	Mr. Libbie Nordmann	Ginny Patten	Ms. Jackie Powell	Ms. Judith Rentschler
Kroger	Logan Lavelle, LLC	Kelly Maynard	Ms. Patricia Moore	Mr. Herbert L. Norfleet	Ms. Dot Patterson	Stacey Powell	Residence Inn - Airport
Ms. Kathleen Kronauer	Jennifer Logan-Stone	Joe Mazza	Ms. Sadiqa Moore	North Oldham Middle School	JoAnn Patterson	Andrea Powers	Resthaven Memorial Park
Helena Kruer	Cindy Long	Ms. Kelly Mazzoli	Ms. Debbie More	Trudy North-Wollak	Ms. Tracy Patton	Ms. Kathleen Pratt	Retired Women of KY Farm Bureau Insurance
Mr. and Mrs. William C. Kuchenbrod	Michelle Lopez	Ms. Lisa Mazzorato-Watson	Ms. Lauren Morgan	Northside Christian Church	Bonner Payne	Ms. Lisa Pittman	Diana H. Revolinski
Vicki Kupper	The Louisville Ballet	Mike McAfee	Bonnie C. Morris	Northside Church of Christ	Ms. Latisha Payne	Prescott's Boutique	Keith Reynolds
Barbara Kurtz	Louisville Bats	Ms. Aimee McCaa	Ms. Gail Morris	Jennifer Norton	Lee R. Payne	Linda Presley	Lawrence Rhodes
Ms. Cheryl Kute	Louisville Design Center	Michael W. McCall	Katrina Morris	Jane Nottingham	Mr. Ed Payton and Mrs. Donna Payton	Mr. Rick Prewitt	Ms. Carol H. Rice
KY Conservation Committee	Louisville General Surgery	Gerald McCarthy	Ms. Mary Morris	NTS Development Company	Ms. Naomi Paziorko	Ms. Brenda K. Price	Ms. Dolores Richardson
Valerie LaCroix	Louisville International Airport Police Dept	Ms. Teresa McClure	Mr. Scott Morris and Mrs. Yvetter Morris	Ms. Aneesah Nu'Man	Mr. John Peabody	Jackie Price	Michele Ridenour
Ladies Auxiliary, VFW Post 5636	Louisville Metro Health Department	Denise McCreary	Susan Morris	Ms. Felicia J. Numan	Ms. Barbara Peak	Tony Priddy	Ms. Margie Riley
Ms. Sheila Laemmle and Mr. David Laemmle	Louisville School of Massage	Hannah McCune	Carol Morton	Dan O'Brien	Marian A. Peake	Pride of Kentucky Chorus	Keith Ringer
Linda LaFleche	Louisville Zoo	Ms. Kelly McDonough	Keisha Morton	Ms. Joan O'Brien	Karen Pearce	Pride of Thoroughbred Temple of Elks	Ms. Barbara Rippy
Tina Lamberg	Ms. Sharon M. Love	Barbara McGarry	Morton's of Chicago	Ms. Teresa O'Brien	Robert D. Pearce	Patrice Priestley	Ms. Thelma Rishor
Ms. Sarah Lamkin	Ms. Linda Lucas	Ms. Beth McGarry	Ms. Gladys Mosby	Penny O'Bryan	Karen Pearn	Probation & Parol	Irvin Risinger
Ms. Kaye Lampman	Patrick Luch	Ms. Barbara McGee	Ms. Marsha Mosley	Carol L. O'Bryant	Jan and Joe Pearson	Ms. Evelyn Peeler	Diane Ritter
Judith Landis	Ms. JoAnn Lucia	Ms. Kim McGee	Joe Motley	Mrs. Tommie C. O'Callaghan	Ms. Suzy Peers	Probation and Parole Southeast	Ms. Sylvia Rivas
Ms. Julie C. Lange	Lucy's Best	Tony McGhee	Mr. Mike's Painting	Mr. and Mrs. Bob O'Connor	Pegasus Satellite	Ms. Patricia Probus	River City BPW Club
Brenda Langhorst Beck	Edna Ludwig	Ms. Kathleen M. McKiernan	Mr. and Mrs. Chris Mueller	Ms. Jill C. O'Daniel	Rhonda Pendigraph	Scott Proffitt	Latrese Rivers
Ms. Jennifer Langley	Mr. Jacob Luker	Ms. Theresa A. McLellan	Frank Mueller	Mr. Paul O'Daniel	Ms. Sheila Penney	Kim Pennington	Barbara A. Robbins
Jill Lanham	Mr. R. F. Lussky	Ms. Missy McMullan	Mrs. J. H. Mueller III	Ms. Penny O'Dea	Kim Pennington	Leah M. Pepper	Brian C. Robbins
Marla Lantz	Ms. Elizabeth Lutshell	Karen and Michael McQuade	Ms. Janice Mullin	Marcy O'Shea	Project Linus	Ms. Sharon Perdue	Tara Robbins
Maureen and Isaac Larison	Louise F. Lynch	Ms. Michelle McQueen	Kevin Mullins	Ms. Amanda Marie Odle	Providence Retirement Home	Debbie Perellis	Aaron D. Roberson
Judy LaRone Perkins	Mr. Mike Lynch	Mr. Kevin A. McTavish	Mark Muluniks	Ms. Lisa C. Ogburn	PSI & Associates, Inc.	Pam Perkinson	Dennis Roberts
Lisa Lattis	Mr. Sandy Lynch	Ms. Judy Meade	Jennifer Muncy	Kathy Ohlmann	Publishers Printing Company	Christina and Arthur Perry	Ms. Suzanne Roberts
	Lyndon Resale Shop	Jacqueline Medford	Nancy Muncy	Ms. Paula J. Ohlmann	Duanne Puckett	George Perry	Vicky Roberts
		Shirley Meeks	Kim Munsterman		Mr. Rob Putz		Mr. Artie Robertson
					Mark Putzig		E. S. Robinson

Sylvia Robinson	Mary Anne Scott	Donald N. Smith	Mark Steiner	Ms. Jennifer Thacker	Ms. Jane A. Tyler	Ms. Vicki Way	Monica Wolking
Carol Robrahn	Erma Scotland	Genevieve Smith	Mr. Alan Steinmetz and	Whitney Thacker	UFPC	Shannon Weaver	Ms. Robin Womack
Cathy Rogers	Scottsburg High School	Ms. Janice Smith	Ms. Joetta S. Steinmetz	Ms. Charlotte S. Tharp	United Defense	Weekenders, USA, Inc.	Women in Networking II
Ms. Lisa Rolfe	Ms. Janice Seaman	Ms. Joyce A. Smith	Marilyn Steinmetz	The Body Shop	University of Louisville - Athletics	Ms. Amy Wegener	Women of the Moose #2001
Beth and Dan Rose	Tekya S. Searles	Joyce Smith	Alison and William Stemler	The Healing Place	University of Louisville Hospital	Wehr Constructos, Inc.	Janice Wood
Donna Roseberry	Sears - Jefferson Mall	Ms. June Smith	Debbie Stengel	The Light Touch	UPS	Ms. Jessie Weigel	Jerry Wood
David Rosenbaum	Christine Seelbach	Mr. Oliver Smith	Ms. Maria Stephens	The Limited	UPS Flight Operations	Weissinger Hills Golf Course	Suzanne Wood
Ms. Bea Rosenberg	Selfridge & Associates, Inc.	Pam Smith	Carla Stepp	Ms. Martha Theobald	Mr. and Mrs. Michael B. Vairin	Ms. Rhonda Welch	Kevin Woodall
Marie Rosenberg	Ms. Robin Sellers	Mr. R. Craig Smith	Ms. Regena Stevens	Mary Lynn Thieneman	Ms. Fraulein Valentine	Jon Wellinghurst	Cecelia Wooden
Ms. Julie Ross	Eric Seltz	Ms. Rebecca T. Smith	Ms. Agnes Stewart	Julie G. Thoben	Valley Station Baptist Church	Ms. Brenda Wells	Mr. Kevin L. Wooden
Ms. Michelle Ross	Ms. Valeri Seng	Ms. Rebecca Smith	Ms. Karen Stewart	Ms. Darlene B. Thomas	Valley Women's Club	Mary Wenker	Jean Woodring
Ms. Tiffany Ross	Seng Jewelers	Susi Smith	Melissa Stewart	Ms. Deborah J. Thomas	Van Zandt, Emrich & Cary	Janet Werle	Ms. Deidri Woods
Ms. Christine Rosson	Mary Beth Settle	Tim Smith	William Stewart	Ms. Debra Thomas	Insurance	Ms. Mary Ann Werling	Melodie Woods
William S. Rubin	Seven Angels Church	Ms. Katrina Smithers	Helen D. Stiglitz	Dr. Joan E. Thomas	Ms. Andrea E. Vance	Nancy Wesolosky	Bobbie Wooldridge
Rudd Equipment Company	Leslie Sexton	Sandy Smithers	Sharon Stine	Ms. Linda K. Thomas	Ms. Juanita Vance	Brad Westerfield	Brenda Woosley
Ms. Nancy L. Ruley	Donna Shadix	Coranne Smitley	Mrs. and Mr. James W. Stites	Michael J. Thomas	Paula Vasse	Susan Westfall	Wendy Wooten
Ms. Lou Jane Rupp	Brady Shadowhawk	Ms. Ruth A. Sneed	Jennifer L. Stokes	C. Terry Thompson	Shirley F. Vaughn	Ms. Carolyn Wetterer	WQMF Radio
Ms. Debra Russell	Chad Sharber	Sarah Snell	Ms. Lisa Stone	Carrye Thompson	Noel Vazquez	Mr. James Wheatley	Donald Wright
Leroy Russell	Kathy and Barry Shaughnessy	Ms. Tracy Snow	Pam Stone	Darlene Thompson	Mr. Juan Velez	Jan Wheatley	Ms. Jeanne Wright
Ms. Patsy A. Russell	Ms. Linda Shaughnessy	Something 4 All Consignment	Rita Stone	Mr. George Thompson	Vermont American Corporation	Jan Wheatley	Sherry L. Wright
Ms. Shirley Russell	Ms. Anetta Shaw and	Sonny Bishop Cars	Stone, Pregliasco, Hayes &	Mr. and Mrs. Jamie Thompson	Patty Vest	Mr. Shawn Wheatley	Tia Marie Wright
Mr. David Russo	Mr. Chris Maguire	Southeast Christian Church	Buba LLP	Ms. Rachel Thompson	Deborah and Steven Vice	Ms. Danita Wheeler	Ms. Sara Wright and
Mr. Chris Ryan	Ms. Denise Shaw	Southside Baptist Church	Ms. Carrie Storms	Shannon Thompson	Vivian M. Vinson	Gloria Wheeler	Mr. William Wright
Don Ryan	Shaw Accessories and Apparel	Southside Baptist Church	Ms. Terri Stottman	William Thompson	Ms. Minerva Virola	Kathleen M. Whelan	Wright's Excavating, Inc.
Robert P. Ryan	She of Louisville Inc.	Ms. Sally Spagnolo	Patricia Stout	Ms. Dorothy Thurman	Mrs. Patricia and Mr. Paul Vissman	Marsha Whismon	Ms. Ellen Wynkoop
Youssef Salhi	Ms. Brandell Shea Bibb	Ms. Elizabeth Spalding	Strawberry Island	Thyme Cafe	Pam Vitaz	Janee' White	Alicia C. Wytrual
Pilar Salinas	Ms. Susan Shearer	Spalding University	Kathleen Streble	Emily Tillman	Marjorie Vitotoe	Ms. Jennifer White	Xi Alpha Epsilon
Ms. Susan L. Salsburg	Michael Sheckles	Linda Sparks	Lisa Stretch	Ms. Catherine Timmerman	Ms. Catherine Vittitow	Ms. Karen White	Wallee Yales
Ms. Sherri Sampson	Dr. John & Anne Shelby	Ms. Evanthia Speliotis	Ms. Marlene Stringer	Sharon Timmons	Vogt Power International, Inc.	Ms. Lisa White	Ms. Mariellen Yates
Sandy Samuels	Shelby County Cooperative	Ann Spencer	Wendy Strong	Shirley Tipton	Ms. Lindsay Volk	Ms. Glenda Whitledge	Ms. Roxanne Yates
Theresa L. Sarver	Extension Office	Ms. Susan Spencer	Mrs. E. Stuart Robinson	Mr. Michael Tique	Voss Clark	Ms. Vickie L. Whitmore	Karla Yeager
Mr. Russell H. Saunders	Shelby Masonic Lodge #662	Valerie Speth	Stuckers Furniture & Flooring	Christy Tobin	Ms. Tracey Wachter	Deneen Whitworth	Mr. Bobby Yeargin
Rebecca Sayers	Frances Shepherd	Springdale Presbyterian Church	Laura Stultz	Beverly Todd	James Waddell	Ms. Barbara A. Whyte	Carolyn Yetter
Dianna Saylor	Shepherdsville Christian Church	Mrs. Margaret Springer	Ms. Nichole Suber	Debbie Todd	Rosalyn L. Wade	Willard M. Wickstrom	YMCA Chestnut Street
Ms. Jeanine Scalf	Mr. Brian Sherrard	Ms. Glenda Spurling	Sonia L. Suggs	Mr. Jim Tomes	Maggie Wade-Campbell	Ms. Barbara Wilbert	YMCA of Greater Louisville
Ms. Carla S. Scarbrough	Ms. Carri Shields	St. Francis of Assist Church	Ms. Brigid Sullivan	Bernice Tompkins	Paige Waggoner	Lois Wilbert	Wanda Yonts
Ms. Gina Schack	Ms. Dorothy Shipley-Foster	St. John Lutheran Church	Carol M. Summe, D.M.D.	Ms. Sherri Toohey	Dave Wagner	Alicia Wilder	Ms. Dora Young
Pat Schardein	Shively Baptist Church	St. John United Presbyterian	Rev. C.G. Summerfield	Thomas Toombs	Mrs. Ruth R. Wagoner	Jeffrey A. Williams	Dorothy Young
Thomas D. Schardein	Shively Christian Church	Church	Ann Summers	Top Line Communication	Ms. Chril Wakefield	Ms. Kelly Williams	Ms. Janis Young
Rosalind Scheitlin	Shively Police Department	St. Joseph Hill Mons	Lori Surface	Mr. David R. Torstrick	Tom Wakefield	Ms. Serena M. Williams	Lauren Young
Ms. Karin Schell	Carol Short	Organization	Mr. Mark Sutherland	Ms. Nicole Touma	Vicki Waksak	Williams Medicolegal Nurse	Melvin Young
Ms. Wendy Schicker	Ms. Beth Shouse	St. Patrick Church	Sheila A. Sutton	Ms. Deborah S. Towson	Wal-Mart	Consultants	YUM Brands, Inc.
Tracy Schiller	Ms. Robin Shouse	St. Paul's Youth Group	Swank Salon	Transit Authority of River City	Ms. Cate Walden	Sharon Willis	Z Salon & Spa
Rebecca Schmidt	Libby Shreve	St. Peter Claver Auxilary	Ms. Carolyn and	(TARC)	Ms. Nena Walker	Ms. Christy Wilson	Stacey Zickel
Kellye and Todd Schmiedeler	Mrs. June Sievert	St. Thomas More Church	Mr. John Sweeney	Ms. Andrea Trautwein	Angela Walls	Donna J. Wilson	Mr. Bob Ziegler
Lynette Schneider	Marian Silliman	George and Susan Stacy	Sweet Stuff	Doris A. Travis	Jane Walls	JoHannah Wilson	Ms. Stephanie Ziegler
Jessica Schoen	Brenda Simmons	Ms. Lori C. Stahlgren	Lindsey Swetlik	Ms. Darline Traynor	Pamela Walls	Ms. Karen M. Wilson	Ed and Erin Zimmer
Mr. Don Schroeder	Ms. Cynthia Simmons	Ms. Nikki Staley	Ms. Latonya N. Swope	Chantel Treading	Tamara Walls	Karen Wilson	Ms. Nancy L. Zinner
Richard J. Schroer	Judith R. Simmons	Ms. Helle J. Staloff	Marvin Swope	Treasure Home	Karrie Walp	Margaret W. Wilson	Mr. Paul Zinner
Mr. Paul Schuhmann	Mr. Ronald Simpson	Ms. Rhonda R. Stanley	Ms. Mattie Belle Swope	Meredith Trendel	Christina Walsh	Ms. Mary A. Wilson	Jennifer Zoeller
Ms. Betty Schuler	Sisters in Crime	Star Light Goddess	Hanadi Talaat	Tri-city Crown & Bridge	Mrs. Lisa Ward and	Ms. Rebecca Wilson	Ms. Mary M. Zoeller
Ms. Mellisa Schuler	Lynn Sitier	State Farm Insurance Sellersburg	Marda Tasman	Mrs. Deborah M. Triplett	Mr. Anthony Ward	Mr. and Mrs. David Winbigler	Ms. Barbara Zoller
Kevin R. Schultz	Michael Skaggs	Agency Field Office	Mr. Arthur Taylor	Ms. Debbie Tross	Ms. Tina Ward-Pugh	Ms. Karen Winters	William Zorn
Ms. Susan Schultz	Janet Skees	Mr. Bob Stauble	Denise Taylor	Susan Tucker	Ms. Melinda M. Ware	Debbie Wise	Mary Zurkuhlen
Mr. and Mrs. Lee A. Schulz	Stacey Skillman	Ms. Lisa Stead	Ms. Denise Taylor	Ms. Tamie Tucker	Allison Warner	Ms. Beth Wiseman	
Ms. Linda Schuster	Barbara Skinner	Mr. Greg Stearman	Oyama L. Taylor	Versa S. Tucker	Randy Waters	Ms. Karen Wittner	
Michael Schutte	Sonya Skipworth	Ms. Taylor Stebbins	Regina Taylor	Ms. Shontai Tudor	Gay Wathington	Mary Wizdemer	
Ms. Gail Schwartz	Ms. Joanna S. Slider	Steelskin Studio	Ms. Rilla Taylor	Ms. Jeanne Tuell	Linda Watkins	Ms. Barbara Woerner	
Scott Schwartz	Mr. and Mrs. Richard Sloan	Ms. Jackie Stehly	Rita Taylor	Ms. Jennifer Tullio	Mary Ann Watkins	Debbie Wohner	
Ms. Claire Scigliano	Ms. Betsy Smith	Shirley Steier	Stacey Taylor	Mr. Charles Turner	Mrs. Revelle Watkins	Ms. Ruthanne Wolfe	
Mr. Anthony W. Scott	Ms. Brenda J. Smith	Ann K. Stein	Ms. Krista Terhune	Ms. Dee Turner	Mike Watson	Ms. Claire Wolken	
Ms. Diane Scott	Cherry K. Smith	Ms. Sherry Steinbock	Ms. Mary Texas	Angela Tussey	Ms. Trudy E. Watson	Mr. Tom Wolken	

Memorials and Honorariums

The Center for Women and Families annually receives gifts in honor of anniversaries, birthdays or individuals that are special to the donor. These donors simply notify the agency, in writing, of their desire to remember a special person or occasion and enclose that note with their check.

In addition, families of clients and friends often name The Center for Women and Families as the beneficiary of expressions of sympathy when a loved one passes on.

The following contributions were received between July 1, 2002 and June 30, 2003.

In Honor of Marie Abrams
Helene and Norman Banks
Mr. and Mrs. Jonathan Blue
Betty S. Fleischaker
Vincenzo & Patricia Gabriele
Sonia and Howard Hess
Cheryl Karp
Sonia and Ron Levine
Janet and Alan Levitan
Siddy Rosenberg
Laura and Mark Rothstein
Denise and Sheldon Schiller

In Honor of Scott and Christine Anderson
Robert and Linda Anderson

In Honor of Alice Miles Barbee
Anita P. Barbee, Ph.D.

In Honor of Dr. Richard Russell Barbee
Anita P. Barbee, Ph.D.

In Honor of Karina Barillas
Dr. Elizabeth Fitzgerald

In Honor of Bonnie Bloom
Darlene Holzbach

In Honor of Bob Boyle
Terri Cummings

In Honor of Dr. Frances A. Brennan
Martha T. McCoy, MD
Anna Frank Wollak

In Honor of Patrick Bruenderman
SeniorCare Staff

In Honor of Bill Carroll
Terri Cummings

In Honor of Benjamin Miles Hillbrook Cunningham
Anita P. Barbee, Ph.D.

In Honor of Bill and Polly Cunningham
Elizabeth Pope

In Honor of Dr. Michael Robert Cunningham
Anita P. Barbee, Ph.D.

In Honor of Robert Michael Richard Cunningham
Anita P. Barbee, Ph.D.

In Honor of Jill Force
Chilton & Medley, PLC

In Honor of Rus Funk
Sanctuary, Inc.
St. Stephen Baptist Church

In Honor of Mr. and Mrs. George Gans
Michael and Mary Jane Nabicht

In Honor of Nance Goodman
Frederick George

In Honor of Mary Moss Greenebaum
Mr. & Mrs. Charles Arensberg
Martha Neal Cooke
Shaum S. Duncan
Vincenzo & Patricia Gabriele
John S. Greenebaum
Dr. Mitzi Krockover & Dr. Jacque Sokolov
Sonia and Ron Levine
Janet and Alan Levitan
Sharon Loewy
Laura and Mark Rothstein
Mr. and Mrs. Robert Rounsavall
Lindy and William Street
The Sumner Foundation

In Honor of Culver and Lourdes Halliday
Elizabeth Pepa

In Honor of Jane Halliday
Elizabeth Pepa

In Honor of Nannie Harrison
M. Kathleen Coleman

In Honor of Judy Heitzman
Charles and Martha Cooper
Dave Cooper

In Honor of Melani Hensley
Our Lady of Lourdes Church

In Honor of Dale Herink
Stillpoint, Inc.

In Honor of Allie Corbin Hixson, Ph.D.
Kathy and Gary Drehmer
Kathleen Kremer

In Honor of Kathryn Horneffer
Our Lady of Lourdes Church
Ursuline Campus Schools

In Honor of Gretchen Hunt
Indiana Coalition Against Domestic Violence
Louisiana District Attorneys Associations, Inc.

In Honor of Dr. Terri Joliet, MD
Mary Valentin, MD

In Honor of Kent School of Social Work
Anita P. Barbee, Ph.D.

In Honor of Dr. Mari Knights
Mary Valentin, MD

In Honor of Molly Leonard
Bobby Shore

In Honor of Mark and Marion Lewis
Elizabeth Pepa

In Honor of Louisville Collegiate School Teachers and Staff
Anita P. Barbee, Ph.D.

In Honor of Kevin McAdams
Sandra and Kenneth Klotz

In Honor of Charlie Mahl
Debra and Ronald Murphy

In Honor of Tracy Marshall
Our Lady of Lourdes Church

In Honor of Kathy Mershon and Todd Gardiner
Robert and Nicki Yann

In Honor of Bill Meyer
Terri Cummings

In Honor of Jana Meyer
Louisiana District Attorneys Association, Inc.

In Honor of Lynn Meyer
Jewish Hospital HealthCare Services
Jane Younger

In Honor of Amy Mudd
Metro Louisville
Our Lady of Lourdes Church

In Honor of Toni Murray
Carolyn Hulse
Edgar S. Goins

In Honor of Brandy Peden
Our Lady of Lourdes Church

In Honor of Carol Peterson
Mr. and Mrs. Byron Wilborn

In Honor of Jim and Tina Raffin
Donald R. Duncan

In Honor of Kathryn Raines
Mr. and Mrs. Robert Taylor

In Honor of Michelle and Steve Rapp
Philip and Vicki McCombs

In Honor of Nancy Richards-Akers
Linda Voss

In Honor of Dawn Ripley
Lynn B. Rueff

In Honor of Kate Rudd
Ascencion Student Council
Our Lady of Consolation
Our Lady of Lourdes Church
Sister of the First Baptist Church
Cynthia Wedding
Wesley Manor Retirement Community

In Honor of Joy Rueff
Lynn B. Rueff

In Honor of Faculty and Staff at St. Francis School
Kathryn M. Rudd

In Honor of Marcia Schuster
Dr. and Mrs. Norton Waterman

In Honor of Cecilia Skees, S.L.
Nina and Edward Bonnie
Martha and Walter Harper
Betty A. Jones
St. Benedict Center Board of Directors
Hilary and Winona Skees
Mary and William Skees

In Honor of Catherine Smith
Barbara and Thomas Aubrey

In Honor of Doug and Preston Stouyh
Elizabeth Pepa

In Honor of Ray Strothman
Terri Cummings

In Honor of Tim Thelloy Family
Ellen and Michael O'Connell

In Honor of Darlene Thomas
University of Louisville

In Honor of The Lee B. Thomas Family
Marc Satterwhite and Rebecca Jemian

In Honor of Mrs. John Wallace
Dr. and Mrs. Edward Warrick

In Honor of Patrick Welsh
Debra and Ronald Murphy

In Honor of Karen Webb
Ascension Student Council
Ms. Sharon L. Bowles
Ms. Jennifer M. Smith
Norton Healthcare
Our Lady of Lourdes Church
Spencerian College
Ms. Jane Younger

In Honor of Matt Williams
Alice and George McCall

In Honor of Reverend Willa Fae Williams
Jean P. Branum

In Honor of David Wilkerson
Terri Cummings

In Honor of the 2003 Women of Distinction
ARC Janitorial Supply
Sally MacDonald

In Honor of the Birthday of Barbara Aubrey
Judy Logan

In Honor of the Birthday of Judy Logan
Barbara Aubrey

In Honor of the Birthday of Mrs. Howard Markus
Dr. and Mrs. Norton G. Waterman

In Honor of the Birthday of Jill K. Niekamp
Ms. Suzanne Edwards-Simms

In Honor of the 60th Birthday Janet Sleadd
Beverly and Leonard Abraham

In Honor of the 70th Birthday Gloria Saag
Mrs. Eunice and Mr. Arnold Switow

In Honor of the Marriage of Kim & Russ Maney
Anne, Tom, and Windi Burdette
Jeffrey Layman
Walter J. Schwartz
Ireme Sims
Nikki and Ron Taylor

In Honor of the Marriage of Steve and Gail Millar
Leslie and James Millar

In Honor of the 50th Anniversary of Mr. and Mrs. Burt Klein
Edna K. Yarmuth

In Honor of Law School Graduation
Dana Cohen
Sarah and Charles O'Koon

In Memory of Carmen Armes
Bobbie and Charles Armes

In Memory of Georgetta Bell
J.C. Hill Family

In Memory of William Bethel
Bruce and Donna Bohn

In Memory of Dorothy Boggs
David Wooldridge
Paul A. Kaelin

In Memory of Linda Boggs
Mr. and Mrs. Robert J. Bruce
Theresa Daniels
Ron and Denise Davidson
Mr. and Mrs. J.H. Deisenroth
Linda T. Drescher
Mrs. A.E. Dorris
Mary Catherine and Edward Flege
Fred and Beth Gerwing
Helen Hornback
Paul Kaelin
Harold and Susan Kocher
Maria and Edouard Noison
Lisa Schmidt
Tom and Patty Schmoll
Karin Speth
Ben Stivers and Family
David Wetmore and Friends

In Memory of Garry G. Butterman
Dennis Benson
Becky and Steve King
Lynn B. Reed

In Memory of D. Russell Chamberlain
Dwight R. Chamberlain

In Memory of Vi Collins
Anne R. Maron

In Memory of Bonita Lynn Cox
Bertha and Bill Postill

In Memory of Mrs. Shirley Creagh
Catherine and Carroll Brown

In Memory of Veronica L. Daugherty
James L. Daugherty, Jr.

In Memory of Bill Fennell
Michael and Mary Jane Nabicht
Lee and Mary Schulz

In Memory of Pam Fortney
Sally L. Shown

In Memory of Bill Gage
Margaret Gage

In Memory of Mr. Albert Gruneisen
Mr. and Mrs. Michael J. O’Connell

In Memory of Beverly Hilton
Sonia G. Hess

In Memory of Adele Joyes
Phil and Anne Ardery

In Memory of Pauncho Morgan
Mrs. Bettye Jayne Morgan

In Memory of Mrs. Eugene Mosley, Jr.
Leonard and Mary Lou Meyer, Jr.

In Memory of Joy Oetken
Leonard W. Meyer, Jr. Family

In Memory of Lucy Ogburn
Carol L. Cornette
Sandy Wilburn

In Memory of Patricia Platt
Mrs. Eric Hammel
Dr. and Mrs. Irvin S. Rosenbaum

In Memory of John Rankin
Edna K. Yarmuth

In Memory of A.L. Roby, MD
Joseph Brill, MD

In Memory of Margaret E. Rock
Rita Smith

In Memory of Rose L. Rubel
LuLu Lenihan Davis

In Memory of Mary Rudd
Norma Niehaus
John M. Simms
Lalla and Artie O’Bryan
Richard and Ellen Smith
Sally and J. Dan Talbott, III

In Memory of The Mother of Sue Szabo
Sue Szabo

In Memory of Eric Tachau
Mary Ann and Robert Stenger

In Memory of Terry Tillman
Linda Wallbaum Cauble

In Memory of James Quinn Troutman
Mr. and Mrs. Harry Troutman

In Memory of Pat Waterman
Mr. and Mrs. William G. Simpson

In Memory of RaShaan Roland Willis
Melissa and John Arnold
Michael Baxter
Kathleen and John Blumenstock
Ms. Donna Bratcher
Chris Burke
Celeste and Maurice A. Byrne, Jr.
Sherrie M. Childers
Sharon and Doyle Criswell
Family Care Dentistry
Melissa Fultz
Gist Piano Co, Inc.
Michelle Gorter
Genevieve Heavrin
Janie and Robert Henderson
Jane and Alan Hennessey
Kathy and Timothy Jarvi
Mary Ann and Glenn Kuerzi
Carolyn M. Linton
Mindy Martin
Kathryn W. May
Marilyn and John Meredith
Mary Ellen and Michael Norman
Rita Olshansky
Martha and George Scobee
Kathy and Barry Shaughnessy
Sivori Catering
Emma Jean Thompson
Elizabeth and Robert Tichenor
Debra Walton
Deborah B. Williams
Joan and Robert Wimsatt
Kim and Chris Wiseman
Linda and John Yuda

In Memory of Mimi, sister of Mrs. Robert Watson
Edna K. Yarmuth

In Memory of Virginia S. Willey
Dr. and Mrs. E.C. Willey

In Memory of Marie Winburn
Barbara Carpenter
Molly A. Leonard

In Memory of Mia Zapata
Michael Peskura

In Memory of Dr. Debra Zukof
Mrs. Denise and Dr. Martin

In Memory of Mary Sue Voyles
Chad Adams
Jennifer Adams
Kathy Blair
Donnie Cox
Dixie Daugherty
Linda Davidson
Donna Givans
Kathryn and Jack Gotting
Betty Groomer
Alsie and Mary Ruth Hord
Elaine Hord
William Hord
Kristen Johnson
Kentucky State District
Council of Carpenters
Gretchen Lehman
NICU & NBN - U of L Hospital
Kathy Norris
Rick and Barbara Penick
Janice Picou
Maxine Roach
Millie Sabo
Don and Sonna Sherrow
Wayne and Ruth Sherrow
Nancy Voyles
Debby Wenger
Avalon White
Glenda White
Marjorie Wyrick

In Memory of Mimi, sister of Mrs. Robert Watson
Edna K. Yarmuth

In Memory of Virginia S. Willey
Dr. and Mrs. E.C. Willey

In Memory of Marie Winburn
Barbara Carpenter
Molly A. Leonard

In Memory of Mia Zapata
Michael Peskura

In Memory of Dr. Debra Zukof
Mrs. Denise and Dr. Martin

Celebration of Service

Since 1988, The Center for Women and Families has proudly recognized “Women of Distinction” for their individual and collective achievements in the community.

Thanks to committed volunteers and growing corporate sponsorship – especially that of Charlie and Bettie Johnson – this gala continues to captivate

Flagship Sponsor - \$25,000
Charlie and Bettie Johnson

Cornerstone Sponsor - \$20,000
Insight Communications

President Sponsor - \$10,000
Brown Forman Corporation

Trustee Sponsor – \$5,000
Brown & Williamson Tobacco Corporation
Clark Memorial Hospital
The Mershon Company
Norton Healthcare Women’s Services
YUM! Brands, Inc.

Leadership Sponsor - \$2,500
Baptist Hospital East
CNA Insurance
Cotton & Allen, P.S.C.
Jewish Hospital HealthCare Services
Michael Koch and Associates
Republic Bank & Trust Company
Today’s Woman Magazine
University of Louisville Hospital

Center Circle Sponsor - \$1,500
A.N. Roth Company
AEGON Corporation
AmeriHealth Mercy
Appriss, Inc.

Archdiocese of Louisville
Bank One of Kentucky
Nina and Edward Bonnie
Caritas Medical Center
Colgate-Palmolive Company
David Engineering & Construction, Inc.

County Commissioner
Delores Delahanty
Executive Inn
Fenley Real Estate Group
Fifth Third Bank of Kentucky
FKI Security Group
Floyd Memorial Hospital & Health Services
The Galt House
John Greenebaum
Greenebaum Doll & McDonald PLLC
Humana Foundation
Hume Pharmacy
Jefferson County Attorney’s Office
Little Brownie Bakers/Kellogg’s
Merrill Lynch
National City Bank of Kentucky
PNC Bank, Inc.
Seniorcare, LLC
Ms. Joyce Seymour
Sisters of Loretto
St. Benedict Center
Stites & Harbison
Stock Yards Bank & Trust Co
Joan E. Thomas, MD
Transit Authority of River City (TARC)
Treasurer of Jefferson County, Kentucky
Trover Solutions, Inc.
University of Louisville - Commission on the Status of Women
Voluforms
The Children of Mrs. Margaret Yeager Williams
Virginia L. Woodward

audiences. In addition, the evening of laughter, stories and accomplishments generates income that nourishes our vital programs.

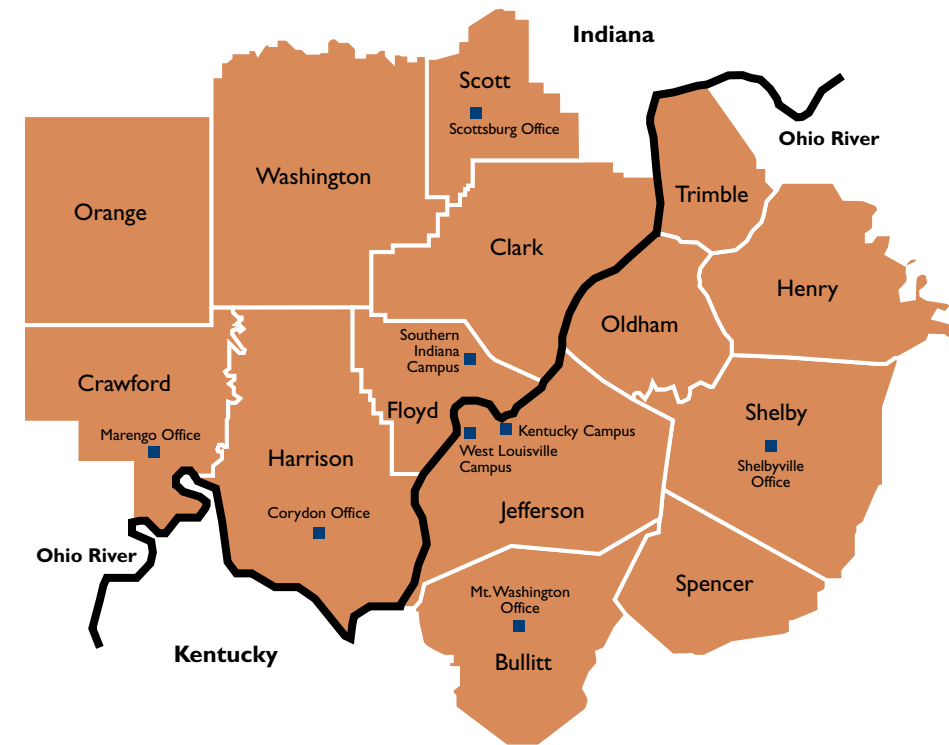
Thanks to the following individuals, corporations, foundations and organizations whose participation made the 2002 Celebration of Service so successful.

Gifts
Marie and Ronald Abrams
Ms. Janet Adams
Dr. Liliayce Akers
Ms. Susan Allen
Anderson, Bryant, Lasky & Winslow, P.S.C.
Anonymous
ARC Janitorial Supply
Mr. Charles S. Arensberg
Mrs. Minx and Dr. Sy Auerbach
Mr. and Mrs. Norman B. Banks
Ms. Gail R. Becker
BellSouth
Ms. Ann K. Benfield
Mrs. and Mr. Lee Benovitz
Mr. and Mrs. Barry Bingham, Jr.
Hon. Angela M. Bisig
Jon and Tracy Blue
Mr. Frank Bock
Elaine and Donald Bornstein
Mr. James J. Bornstein
Ms. Deanna Brady
Bramco
Brasch Barry General Contractors, Inc.
Ms. Bethany Breetz
Mrs. Mary A. Brooks
Ms. Amanda M. Brown
Mr. Owsley Brown, II
Patrick Bruenderman
Ms. Deborah Burda
Thomas W. Burnett
Ms. Cynthia Buttorff
Ms. Celeste A. Byrne and Mr. Maurice A. Byrne
Ann M. Cain
Ms. Linda Carter
Ms. Carolle J. Clay
Ms. Cindy Clifton
Mrs. Lee Cochran
Mr. Lewis D. Cole

Mr. and Mrs. John Combs
Commonwealth of Kentucky
Mr. and Mrs. Graham B. Cooke
Mr. and Mrs. Frederic J. Cowan
Ms. Lena Crabtree
Ms. Laura Douglass
Ms. Reba L. Doutrick
Dri-View Manufacturing Co.
Mrs. and Mr. Francis R. Duerr
Ms. Shaun S. Duncan
Ms. Diane Everse
Fran Fach
Ms. Betty S. Fleischaker
Ms. Angela Fleitz
Maud R. Fliegelman
Ms. Margaret A. Fowler
Mr. and Mrs. Vincenzo Gabriele
Global Link Logistics, LLC
Dr. and Mrs. Leonard A. Goddy
Dr. Laman Gray
Mr. John S. Greenebaum
Mr. Todd E. Gribbons
Ms. Karen Hale
Mrs. Barbara A. Harned
Mrs. Martha and Mr. Walter Harper
Hawley-Cooke Booksellers
Carol and Michael Heideman
Sonia and Howard Hess
Home of the Innocents
Ms. Nelle Horlander
Ms. Cathe Hutchens
Jewish Community Federation
Mrs. Betty A. Jones
Ms. Wendy Keenan
Dr. and Mrs. Harold F. Klein
Dawn M. Klemm
Michael and Joanna Koch
Kathy and Joe Kremer
Dr. Mitzi R. Krockover
Ms. Jane Lapinski
Dr. and Mrs. Ronald L. Levine
Ms. Janet P. Levitan

Shary Loewy
 Louis T. Roth Foundation, Inc.
 Mrs. Sally D. MacDonald
 Rep. Mary Lou Marzian
 Mrs. Cheryl A. Matthews
 Ms. Angela M. Mattingly
 Ms. Carol Mattingly
 Mr. and Mrs. Randy McAtee
 Michelle G. McMasters
 Mr. Larry Mehler
 Ms. Sandra J. Metts
 Ms. Joyce A. Meyer
 Ms. Linnie Meyer
 Leonard and Mary Lou Meyer
 Ms. Lillian C. Milanof
 Ms. Judy L. Morrison
 Ms. Amy Mudd
 Ms. Debra M. Murphy
 Carolyn and David Neustadt
 Ms. Sara E. Pires
 Planned Parenthood of Louisville,
 Inc.
 Mrs. Sharon and
 Mr. Henry Potter
 Mrs. Margaret Read
 Ms. Sidy Rosenberg
 Mrs. Marcia L. Roth
 Laura and Mark Rothstein
 Mr. and Mrs. Robert W.
 Rounsavall III
 Rudd-Sarfin Family Trust Fund
 Mrs. Corky Sachs
 Mrs. Terry Sales
 Shelley and John Santry
 Ms. Kathleen K. Schell
 Denise C. Schiller
 Ms. Peggy Schmidt, LCSW
 Ms. Doris Schneider
 Mrs. Inez Segell
 Ms. Cornelia Atherton Serpell
 Mrs. Ellen B. Shelby
 Ms. Mary Jane Silliman
 Sisters of Charity of Nazareth
 Mrs. Mary and
 Mr. Williams Skees
 Ms. Winona Skees
 Ms. Sue Speed
 Charlotte Gay and
 John Clay Stites
 Mr. William M. Street
 The Sumner Foundation, Inc.

Mr. and Mrs. Robert Taylor
 Ms. Darlene B. Thomas
 Ms. Melissa Tong
 University of Louisville
 Mr. George Unseld
 Ursuline Sisters
 Ms. Mary Vanderhaar
 Mrs. Roanne H. Victor and
 Mr. Karl N. Victor, Jr.
 Ms. Polly M. Watts
 Mrs. Joanne M. Weis
 Mr. Mike Wickleff
 Stacy N. Williams
 Mr. Michael Wolf
 Ms. Sue Wood
 Ms. Lillian E. Yeager
 Betty L. Young



The Center for Women and Families Locations

Kentucky Campus
 226 West Breckinridge St.
 P.O. Box 2048
 Louisville, KY 40201-2048
 (502) 581-7200 24 hours

Southern Indiana Campus
 P.O. Box 248
 Sellersburg, IN 47172-0248
 (812) 944-6743 24 hours

West Louisville Campus
 4303 West Broadway
 Louisville, KY 40211
 (502) 775-6408

Corydon Office
 405 N. Capital Ave.
 Suite 102
 Corydon, IN 47112
 (812) 734-0280

Marengo Office
 6941 East State Road 64
 Marengo, IN 47140
 (812) 365-2338

Mt. Washington Office
 7357 Highway 44 East
 Mt. Washington, KY 40047
 (502) 538-0212

Scottsburg Office
 1050 Community Way
 Scottsburg, IN 47170
 (812) 752-7996

Shelbyville Office
 630 Main Street
 Shelbyville, KY 40065
 (502) 633-7800



THE
 CENTER
 FOR
 WOMEN
 AND
 FAMILIES

226 West Breckinridge Street
 P.O. Box 2048
 Louisville, Kentucky 40201-2048
 (502) 581-7200 24-Hours
 Crisis Line 502-581-7222
 Toll Free 877-803-7577
 www.thecenteronline.org



**Metro
 United Way**

Scott County United Way