



We are **The Center.**



**The Center for Women and Families  
2009 Report to the Community**

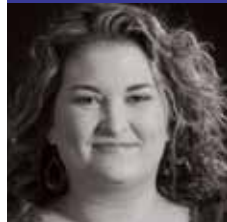
Fiscal Year 2008-2009





# MANY HEARTS ONE MISSION

The Center for Women and Families helps victims of intimate partner abuse or sexual violence to become survivors through supportive services, community education and cooperative partnerships that foster hope, promote self-sufficiency and rebuild lives.



# WE ARE THE CENTER

## Dear Friends,

In 2006 I was asked by a board member to consider becoming President of The Center for Women and Families. Running a non-profit organization after years of doing for-profit work and taking on the mission of helping survivors of intimate partner abuse and sexual assault seemed like an arduous task. But working to improve life for women has long been my passion. During my world travels I've seen the pivotal role women play in every community and due to the strength and influence of my own mother, I knew this opportunity would be my calling. Throughout my life I've enjoyed motivating and inspiring women and at The Center, I would have the privilege to empower and protect them as well. What an honor!

Now, after four years of service I've met thousands of women and worked countless hours and I've learned that this is not easy work. It isn't hard work either. It is what I call "heart work." Each day as I advocate for our mission, I remember that clients and community members don't just see my face and hear my voice, but they see the faces and hear the voices of many. This annual report to the community is focused on the 92 staff members who do the "heart work" 24 hours a day, 7 days a week, 365 days a year.

When called to service in order to better the lives of others, it's impossible not to give something of one's self. This is a reality The Center for Women and Families staff knows very well. In recognition of all they have given, this publication belongs to them since they truly are the heart of The Center. As you open the cover, their stories unfold; stories of commitment, dedication, selflessness and a sense of ownership to make the world we live in a better place. These stories lift the voices of survivors who staff members hear from each day. Just as importantly, they give voice to those who have been silenced—those who have lost their lives to intimate partner abuse or sexual violence.

The economic troubles seen around the world have tested even the strongest of bonds, and we've seen a dramatic increase in the number of clients seeking services at The Center for Women and Families. But our "heart work" continues. It continues at our shelter facilities and in our court houses. It continues with our advocates, therapists, and crisis counselors. It continues with our Mission Support team and our Community Engagement department. And it continues with you.

I want to thank our engaged and connected board of directors for their passion and commitment, our donors who make this work possible, our active corps of volunteers who give tireless hours of service and of course, our staff, whose faces you'll see and stories you'll read in the following pages. But I'm also very grateful to The Center's clients for having the courage to come forward as they seek to rebuild their lives.

I reflect on the words of Melody Beattie, "Gratitude unlocks the fullness of life. It turns what we have into enough, and more. It turns denial into acceptance, chaos to order, confusion into clarity. It can turn a meal into a feast, a house into a home, a stranger into a friend. Gratitude makes sense of our past, brings peace for today and creates a vision for tomorrow."

In peace,

Denise Vazquez Troutman  
President/CEO



Denise Vazquez Troutman  
President/CEO



George Bell III, ORI, Inc.  
Board of Directors Chair

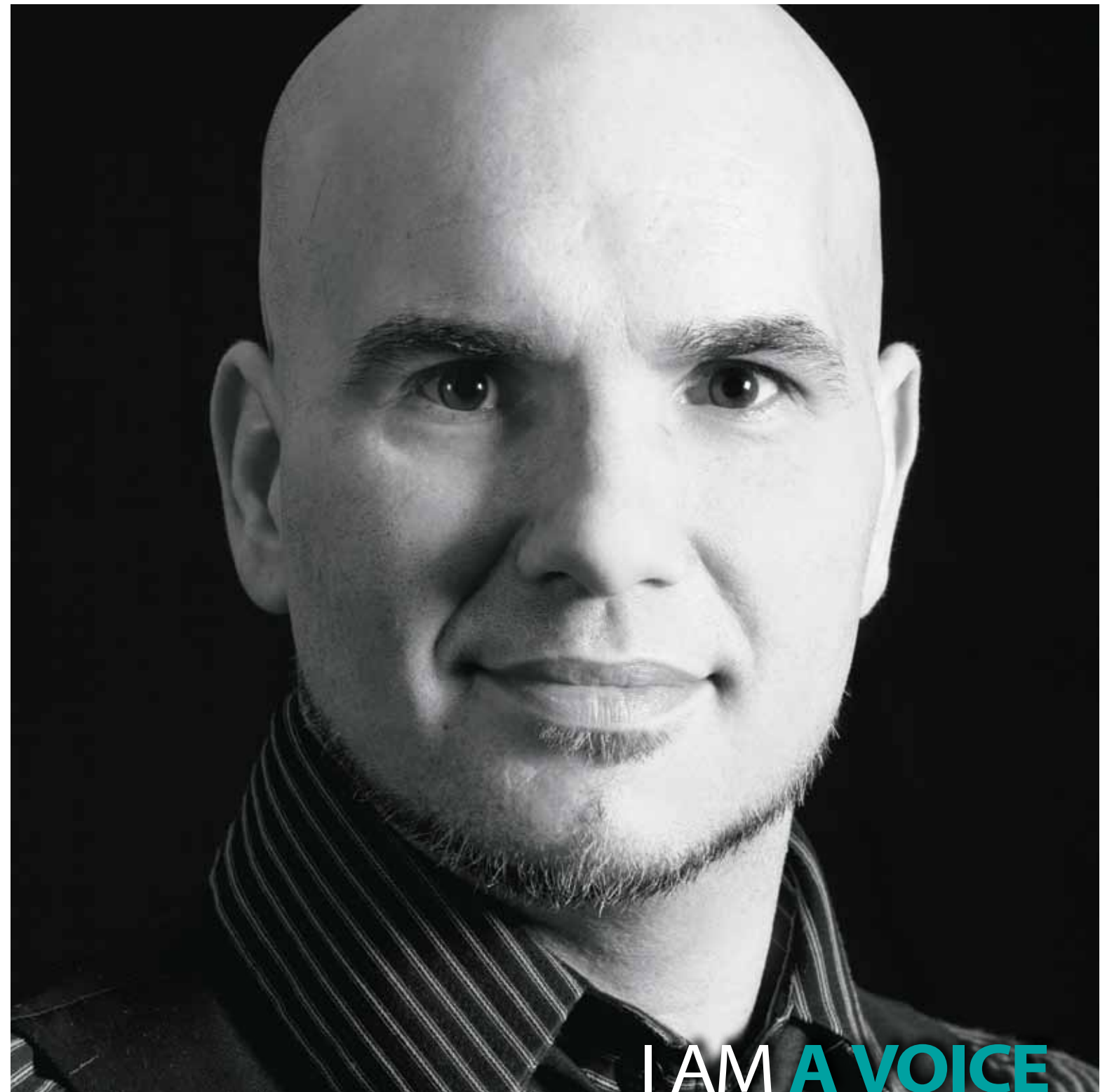
**“I get to see people realize they don’t have to live with violence, that there are other ways to live,”** says David, Front Desk Program Assistant.

**DAVID MITCHELL**

David is what President/CEO Denise Vazquez Troutman calls the “face and voice of The Center for Women and Families.” Seated at the reception desk of The Center’s Joan E. Thomas, M.D. Campus, he’s a warm face of relief for clients fleeing intimate partner abuse or seeking help after a sexual assault. He’s a touchstone for residents leaving for work or grocery shopping, or transitional housing clients dropping by to pick up their mail. It’s also not unusual to see young residents who shout goodbye to David when they run out the front door for school in the morning return in the afternoon with a bear hug around his shoulders. All of this happens simultaneously with unending phone calls to The Center’s main business line and visitors who arrive for appointments with staff.

An accomplished artist and photographer, David studied sociology in addition to art, and he spent several years as a case manager in women’s corrections before beginning his job at The Center. His combination of skills offers a unique perspective; he clearly sees residents at the beginning of their journeys as they arrive at the door, and he sees them when they pack their belongings into a truck and wave goodbye as they move on with their journeys.

He counts witnessing those transitions as one of the most satisfying parts of his job. Another perk is getting to see community members when they deliver new sets of bedding, bring a check that’s the result of a fundraiser they coordinated, or show up to volunteer for a shift serving lunch. He’s overwhelmed as he recounts examples of this generosity, and he’s in awe knowing that so many people—just like him—believe so deeply in The Center’s mission.





I AM GROWTH

DEB WILLIAMS

**“Be present.”** That’s what Deb’s mentor taught her and that **vital message** has carried her through **20 years of family advocacy** at The Center.

Like many of The Center’s long time advocates, Deb has seen terrified mothers arrive in emergency shelter with only her children and a trash bag, packed in haste, containing a few changes of clothes and a cherished stuffed animal. Since Deb began working at The Center in 1990 she’s witnessed this scene countless times. And she’s also seen those same families strive to transform what was once doused with violence into a family guided by respect. It is, Deb says, “a process where, with perseverance and strength, a light bulb will turn on” and Deb’s efforts as a Family Advocate shine brightly.

She describes her co-workers as a family and together they’ve seen The Center for Women and Families grow from a handful of staff who all pitched in to make lunch for residents, plan after-school activities and facilitate support groups to The Center’s current staff of more than 90. Last year The Center provided housing, advocacy, counseling, therapy and education to over 30,000 people.

Deb is proud to have been at The Center long enough to see the place, along with the people it serves, continue to grow. Of the many rewards her clients have given her over the last 20 years, Deb says seeing that once terrified mother blossom into a college graduate with a safe home for her kids is like seeing a rebirth—and Deb can watch them walk on their own.



## “Why would someone who loves me do this to me?”

Carin, an Outreach Family Advocate, spends a lot of time addressing this question from her clients.

**CARIN SEPPA**

Carin, an Outreach Family Advocate at The Center’s Shelbyville office location, often meets clients when they may not be prepared to meet her. She describes a woman she met about a year ago at Shelby County District Court as having a terrified look on her face, not unlike, Carin says, a deer caught in headlights. Carin spoke to her new client about the Domestic Violence Order hearing she was about to experience, explained what the judge may or may not say, and offered support in advance of seeing the woman’s perpetrator for the first time since fleeing the home the couple shared. The survivor didn’t expect to meet Carin at court that day but gratefully welcomed her offer to help.

Carin’s degree is in business management and marketing but she’s from a service oriented family—her mother was a teacher and her father a firefighter—and she learned she had a passion for rape crisis counseling while volunteering on hotlines in California. After she made her way to Kentucky and began working at The Center, Carin relished her role facilitating intimate partner abuse education groups in women’s correctional facilities, and forming connections with regional community partners in addition to supporting survivors in court.

She also enjoys seeing the growth her clients embrace after traveling from feeling “caught in the headlights” of harrowing violence to thriving through a life rebuilt with empowered and respectful relationships. A year later, the client Carin stood by in court has given them both the opportunity to see the difference it made.

**“We talk a lot about preventing violence before it occurs,”** say Community Educators Jessy and Amanda, **“but it’s truly amazing when you see that principle in action.”**



JESSY HAYWOOD

**I AM EMPOWERMENT**



AMANDA HOUPT

**I AM PREVENTION**

**Jessy and Amanda are part of The Center’s Community Education team, which gives year-round informational presentations, professional trainings and prevention and awareness programs. They visit schools, businesses, civic groups and faith communities throughout The Center’s 11 county service area. Since they regularly appear in front of groups together, they’re featured in our Annual Report together as well.**

As Community Educators and Trainers, the results of the work Amanda and Jessy do every day isn’t immediately obvious. Every time they give a presentation on healthy relationships, teen dating violence or bullying prevention, it’s clear to the Educators that some audience members connect with the content as heads nod throughout the crowd. Many times after presentations audience members privately disclose that they’re a survivor of intimate partner abuse or sexual violence, clearly relying on the trust and comfort Jessy and Amanda exhibit when they engage listeners.

The Educators don’t, however, get to hear how their messages change behavior first hand very often. This was a time when they did.

Jessy and Amanda facilitated an eight-week prevention program at a middle school and encountered a boy who was particularly resistant to the curriculum, playing the “tough kid” role until near the end of the program. During the last week of training they found out why. He had been exposed to violence at home, had seen his mother being abused, and even pulled a knife on his mother’s boyfriend because he was so afraid the man would kill his mom. He explained, “My dad, my uncle—all the men I know disrespect women. And I used to disrespect girls too, ‘cause I thought that’s how you’re supposed to treat them. But having you all here has really changed me. I’m never gonna disrespect a girl again.”

The two Community Educators heard this and knew the moment was golden. This—a middle school student who now knew the difference between disrespect and respect and intended to apply it—was prevention.

SOY UN **MODELO A IMITAR**



I AM A **ROLE MODEL**

CONNIE MARTINEZ

**“I love seeing people learn tools to survive without losing themselves or their cultures,”** Immigrant Family Advocate Connie explains.

Connie’s office bubbles with a small water feature on a shelf and the space is much like the Immigrant Family Advocate’s personality—calm and reassuring. Like other advocates, Connie facilitates intimate partner abuse support groups and meets her clients regularly to counsel them and offer resources, but she also helps them navigate what can seem like a maze of confusing lingual and cultural barriers.

Originally from Guadalajara, Mexico, Connie received her degree from the University of Louisville. After graduating and working with immigrants at local community agencies, Connie noticed that intimate partner abuse and sexual violence were serious problems among the populations she served, so she was already familiar with many of the issues she’s encountered since becoming an advocate at The Center. Aside from English potentially being a second language for Connie’s clients, some of the unique challenges immigrant survivors face include unfamiliar regional and cultural customs, lack of local familial support and incomplete knowledge about their rights as a victim of intimate partner abuse or sexual violence.

While facilitating a support group like *Latinas Unidas*, Connie sometimes sees her clients awaken to the idea that healthy relationships aren’t abusive and that it is possible for life to be serene. She says she’s finally used to her clients watching her in action to learn how to navigate everything from an encounter at another social service agency to knowing when to say, “I have the right.” She shows them, finally, they too can find calm in the world.

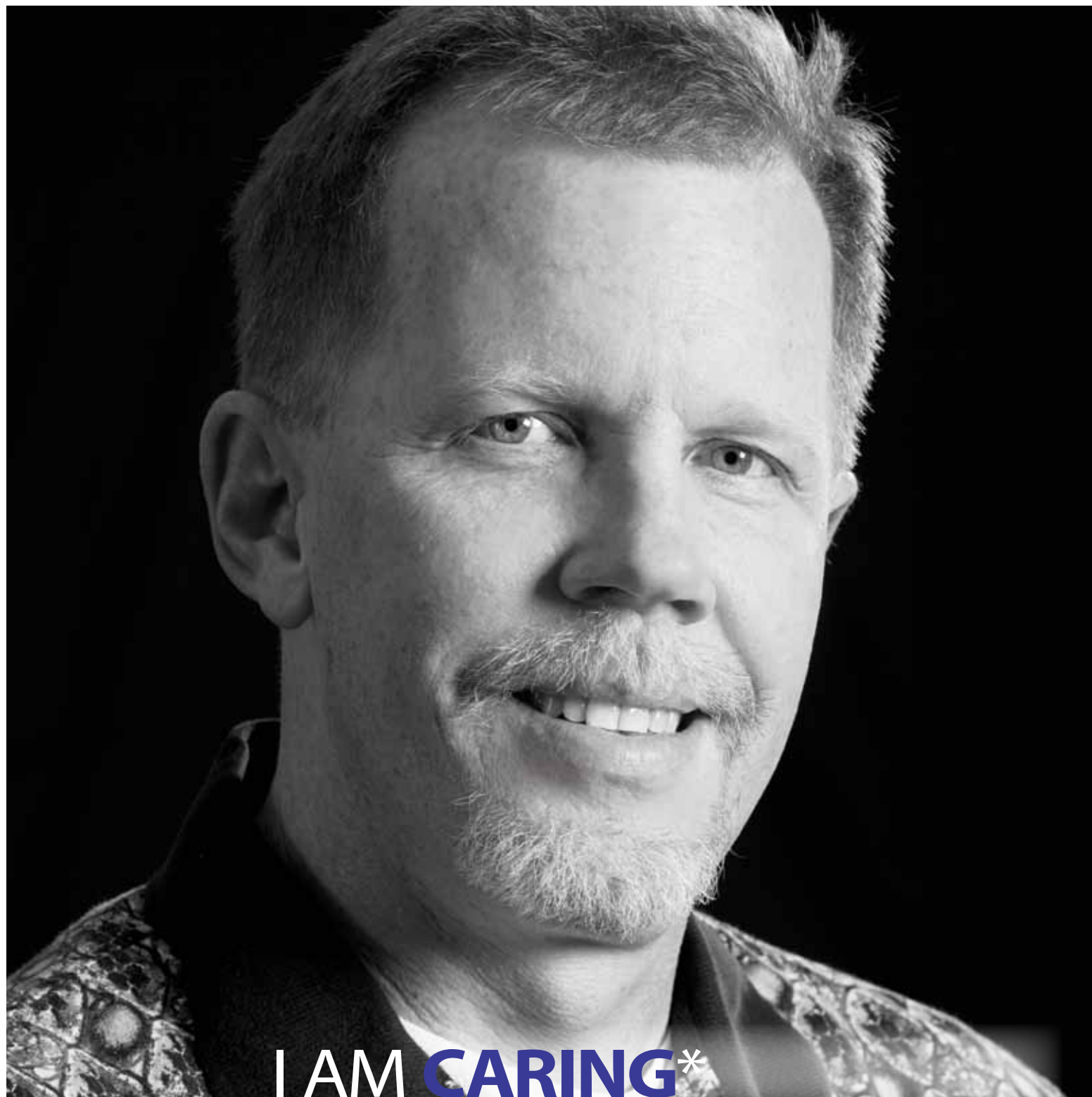
**“I take a lot of pride in  
The Center’s staff,”** explains  
Chris, Director of Human  
Resources & Volunteers.

**CHRIS DUDLEY**

Chris tries to arrive at the Joan E. Thomas, M.D. Campus by 7:30 am so he can be available for staff working any one of three shifts. Third shift Crisis Counselors stop by Human Resources to discuss health insurance or staff appreciation ideas as they finish their nights at 8:30 am. First and second shift employees will find Chris in his office throughout the day. A third shifter at a former job, he appreciates the need to be accessible for all of The Center’s employees.

As someone who enjoys being able to connect and “read” people, Chris values the varied needs of a staff doing difficult work—advocates, therapists and crisis counselors among them at seven regional locations. He also supervises the Volunteer Manager and her ever-growing team. The Center’s impactful work and solid reputation in the community mean that a large number of people apply for most job openings and all of those applications go to Chris first. He carefully reviews each candidate’s qualifications to ensure they exemplify The Center’s core values of compassion, accountability, responsibility, respect, dignity and excellence in all we do.

Similar to how advocates operate at The Center, Chris believes in presenting options to people and empowering them to make their own decisions. It’s a philosophy that serves him well as he navigates what can be very challenging, yet very rewarding work.



**“So much more brings us to The Center than ‘work,’”** says Legal Advocate Krishna about **what drives her, Lindsay and the rest of the Indiana Legal Justice team.**

Krishna and Lindsay are part of the Legal Advocacy team in Southern Indiana. For a time they shared an office as they continued to build on a foundation of awareness about The Center’s services in the Southern Indiana community laid by their co-worker Meredith, among others.



**I AM CONTINUITY**  
**KRISHNA PATEL**

Krishna approaches legal advocacy with realistic expectations and prepares her clients similarly, but she also empathizes with them. She shares the relief her clients experience at the end of a hearing when they’ve gotten requested protections or simply a finding that property will be returned to them. She finds real reward when, after offering support and expertise through what’s usually an emotional trek, Krishna’s client has gained enough knowledge and empowerment to continue navigating the legal system him or herself. When talking about the widespread damage of domestic and sexual violence, she mentions the ripple effect on everyone in our communities. Fortunately, Krishna’s effect on her clients, their children and the rest of their families takes the form of a ripple too.



**LINDSAY BOSTOCK**  
**I AM COMMITMENT**

Like Krishna, Lindsay began work at The Center as a Crisis Counselor before transitioning to Family Advocacy. She loved both of those positions but as a Legal Advocate in Southern Indiana, Lindsay says she’s exactly where she’s meant to be—offering impassioned support and resources to clients at a pivotal time in the community close to where she grew up. She also reaches out to the Clark County community, letting prosecutors, judges and local partners know more about The Center’s services and how to contact Lindsay for referrals or information. It can be a challenge, Lindsay acknowledges, informing local legal professionals that she and her co-workers are available for advocacy on behalf of intimate partner abuse and sexual assault survivors but she knows it’s a pivotal time for that too.

# Facts & Figures

## Board of Directors

(as of June 30, 2009)

### Chair

Kim Tharp-Barrie, *Norton Healthcare*

### President

Denise Vazquez Troutman

### Chair Elect

George Bell III, *ORI Inc.*

### Vice Chairs

Debbie Murphy, *Healthcare Recoveries*

### Treasurer

Lori Moore, *Strothman & Company*

### Secretary

Natalie White, *Humana Inc.*

### MEMBERS-AT-LARGE

Nolen Allen, *Cotton & Allen, PSC*

Diane Everse, *Custom Solutions, Inc.*

### DIRECTORS

Gail Allen, *Dolfinger's*

Beth Andrews, *Hound and Hoof Photography*

Rebecca Brown, *Baptist Hospital East*

Dr. Reginald Bruce, *University of Louisville*

Toni Clem, *Creative Alliance*

Barbara Dickens, *Louisville Water Co.*

Marjorie Farris, *Stites & Harbison*

Scott Graff, *Churchill Downs*

Robert Heinz, *H&H Systems and Design*

Henry L. "Hank" Hensley,

*Raymond James Financial Services*

Rachel Horton, *Humana Inc.*

June Junikon Huggins,

*Indiana University Southeast*

Gabriela Keemer

Laurie Kemp, *Woodward, Hobson & Fulton*

Susan Lonowski, *Frost Brown Todd LLC*

Benjamin P. Marmor, *Brown-Forman*

Houston Mills, *United Parcel Service*

Troy Riggs, *Louisville Metro Police Department*

Shirley Rivoli, *Group Nine*

Olu A. Stevens, *Stoll Keenon Ogden*

Paul R. Surowiec, *General Electric*

Henry "Jay" Walter, MD,

*Beargrass Medical Associates*

Joanne Weis, *Civic Leader*

Casey C. Wilson, *Republic Bank & Trust Co.*

### EMERITUS

Joan E. Thomas, M.D.

### EMERITUS IN MEMORIAM

Lewis Cole

## Statement of Financial Position

Fiscal year ending June 30, 2009

Assets	
Cash and Grants Receivable	\$ 1,893,676
Other Current Assets	484,720
Land, Building and Equipment (Net)	8,785,149
Endowment/Investments	1,672,450
<b>Total</b>	<b>\$ 12,835,995</b>
Liabilities and Net Assets	
Current Liabilities	\$ 212,655
Long Term Debt	0
Net Assets:	
Unrestricted*	9,729,664
Temporarily Restricted	1,221,226
Permanently Restricted	1,672,450
<b>Total</b>	<b>\$ 12,835,995</b>

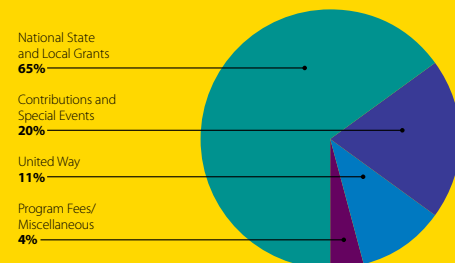
\* Includes facilities, furniture and equipment

## Statement of Activities

Revenues	
National, State and Local Grants	\$ 3,175,341
United Way	558,190
Contributions and Special Events	1,005,918
Program Fees/Miscellaneous	(195,812)
<b>Total Revenues</b>	<b>\$ 4,543,637</b>
Expenses	
Client Services	\$ 4,322,354
Administration	709,919
Fund Development	173,326
<b>Total Expenses</b>	<b>\$ 5,205,599</b>
<b>Net Current Year Activity</b>	<b>\$ (661,962)</b>

The Center experienced a net loss for FY2009 of \$661,962. This loss is attributable to non-cash issues on loss of investments of \$377,568 and depreciation expenses of \$261,716.

## 2008-2009 Funding Sources



# Golden Circle Lifetime Members

The status of Lifetime Golden Circle Member is bestowed on individuals, corporations, foundations and organizations with accrued financial contributions of \$25,000 over a lifetime, or deferred contributions of \$50,000 or more.



- AEGON
- Altria Group, Inc.
- Altria Group, Inc. – Louisville Area
- The Annie E. Casey Foundation
- Anthem Blue Cross and Blue Shield
- Appriss, Inc.
- Archdiocese of Louisville
- Baptist Hospital East
- BB&T
- Black & White
- Bornstein Building Co. Inc.
- Brown-Forman Corporation
- Brown and Williamson Tobacco Corporation
- CARES, Inc
- C. E. and S. Foundation
- Champions 4 Her
- Charlotte R. Schmidlapp Fund (Fifth Third Bank Trustee)
- Chase Bank of Kentucky
- Citigroup Foundation
- Clark Memorial Hospital
- CNA Foundation
- Coalition for the Homeless
- Commonwealth of Kentucky
- Commonwealth Wine and Spirits, LCC
- Community Foundation of Louisville
- Community Foundation of Southern Indiana
- Cotton & Allen, P.S.C.
- The Cralle Foundation
- Domestic Violence Housing Limited Partnership
- Emergency Fund for Women
- Estate of Elizabeth Coolidge
- Fifth Third Bank of Kentucky
- Floyd County Auditor
- Floyd County, IN Treasury
- Floyd Memorial Hospital and Health Services
- Foundation for Financial Planning
- Fred B. and Opal S. Woosley Foundation
- Freddie Mac
- Frost Brown Todd
- GE Appliances
- General Mills Foundation
- George P. & Henrietta D. Whipple Foundation
- The Gheens Foundation
- The Gordon Foundation
- Harrison County Community Foundation
- Henry County Fiscal Court Fund
- Hilliard Lyons Investments
- Honorable Order of Kentucky Colonels
- Horseshoe Foundation of Floyd County
- Humana Foundation
- State of Indiana
- Indiana Criminal Justice Institute – Victim Services
- Indiana Family & Social Services Administration
- Insight Communications
- Irwin Union Bank
- J & L Foundation
- James Graham Brown Foundation
- Jefferson County Grants to Encourage Arrest
- Jefferson County, KY Treasury
- Jewish Hospital and St. Mary's HealthCare
- Kentucky Association of Sexual Assault Programs
- Kentucky Cabinet for Health and Family Services
- Kentucky Domestic Violence Association
- Kentucky Housing Corporation
- Kentucky IOLTA Fund of the Kentucky Bar Foundation
- Kentucky Justice and Public Safety Cabinet – VOCA/VAWA
- Kentucky State Treasury
- Kentucky Workforce Investment
- Kosair Charities
- LG&E Energy Foundation
- Little Brownie Bakers/Kellogg's Snacks
- Longview Foundation, Inc.
- Louisville Bar Foundation
- Louisville Gas and Electric Company
- Louisville Metro Government
- Louisville Metro Housing Authority
- Louisville Metro Human Services
- Louisville Metro Police Department
- Louisville Metro Revenue Commission
- MAC Construction and Excavating
- Metro United Way
- Mildred V. Horn Foundation
- National Association for Public Interest Law
- National City Bank
- National City Bank of Kentucky
- City of New Albany, IN
- Norton Foundation
- Norton Healthcare
- Norton Healthcare Community Trust Fund
- Office of Domestic Violence/ Sexual Assault
- Office of Victim Advocacy
- Oldham County Sheriff's Office
- OPM Services, Inc.
- Pacers & Racers, Inc.
- Paul Ogle Foundation, Inc
- PNC
- Publishers Printing Company
- Purdue University
- Republic Bank & Trust
- Rudd Equipment Company
- Seven Counties Services
- Shelby County, KY Treasury
- Target
- Trover Solutions
- United Way of Scott County
- University of Louisville – Provost
- UPS
- The UPS Foundation
- U.S. Department of Health and Human Services
- U.S. Department of Housing and Urban Development
- U.S. Department of Justice
- Vencor, Inc.
- Ventas, Inc.
- WHAS Crusade for Children
- William E. Barth Foundation
- William Randolph Hearst Foundation
- WLKY-TV
- The Wood and Marie Hannah Foundation
- Younger Woman's Club of Louisville
- Yum! Brands Foundation, Inc.
- Yum! Brands, Inc.
- Helen Harting Abell
- Mr. and Mrs. Nolen Allen
- Anonymous
- Dr. Carol E. Baker
- Bill and Juanita Beach
- Mrs. Edith S. Bingham, Jr. and the Late Mr. Barry Bingham, Jr.
- Ms. Meredith W. Brown
- Mr. and Mrs. Owsley Brown II
- Diane Cornwell
- Ms. Joan C. Day
- Mr. and Mrs. Michael Ehrler
- Mr. Franklin Ensor
- Mr. and Mrs. Clyde F. Ensor
- Mr. Donald L. Ensor
- Mr. Larry J. Ensor
- Mrs. Jean Frazier
- Mr. Owsley Brown Frazier
- Mr. Gus Goldsmith
- Ms. Helen L. Heddens
- Bettie and Charlie Johnson
- Ms. Kathryn Mershon
- Mr. and Mrs. Ronald Murphy
- Kathy and Kent Oyler
- Ms. Margaret Redmon
- Mr. Mason C. Rudd
- Glenn and Ann Thomas
- Mr. Lee and Dr. Joan Thomas



# Annual Fund

We have made every effort to ensure accuracy and apologize for errors or omissions. Please contact Charity Stark at 502-581-7253 or [charity.stark@cwfempower.org](mailto:charity.stark@cwfempower.org) with any corrections.



## Golden Circle of Life: \$25,000+

Brown-Forman Corporation  
 Foundation for Financial Planning  
 Indiana Criminal Justice Institute  
 Indiana Housing & Community Development Authority  
 J & L Foundation  
 Jewish Hospital  
 Kentucky Association of Sexual Assault Programs  
 Kentucky Domestic Violence Association  
 Kentucky Justice & Public Safety Cabinet  
 Kentucky Office of the Attorney General  
 Kosair Charities  
 Metro Louisville  
 Metro United Way  
 Norton Healthcare Community Trust Fund  
 Owsley Brown Frazier  
 The C. E. and S. Foundation  
 US Department of Housing and Urban Development  
 Women 4 Women/ Champions 4 Her  
 Mr. Lee and Dr. Joan Thomas  
 The Cralle Foundation

Woodward, Hobson and Fulton, LLP

## Golden Circle of Hope: \$10,000-\$14,999

Child Victims Trust Fund  
 Harrison County Community Foundation  
 Harshaw Trane Foundation  
 My Morning Jacket  
 Anonymous  
 Mr. and Mrs. Frank Harshaw  
 Ms. Margaret Redmon

## Golden Circle of Giving: \$5,000-9,999

AEGON  
 Avon Foundation, Inc.  
 Brokers Unlimited – Theodore Loebenberg  
 Diana Fund  
 E.ON-US Services  
 GE Employee Community Fund  
 Horseshoe Foundation of Floyd County, Inc.  
 Kentucky Housing Corporation  
 Lewis D. Cole and Jean R. Cole Charitable Remainder Trusts  
 Macy's Foundation  
 Maplewood Foundation  
 National Association of VOCA Administrators  
 PNC  
 Rite Aid Foundation  
 Scott County Community Foundation  
 Sutherland Foundation  
 Target  
 United Way of America

University of Louisville Provost Office

Verizon Wireless  
 Wellpoint Associate Giving Campaign  
 Ms. Meredith Brown  
 Mr. Lewis Cole  
 Mr. Paul J. Diaz  
 Ms. Lee Ann Ellingsworth  
 Ann and Glenn Thomas  
 Ms. Mary Gwen A. Wheeler and Mr. David A. Jones

## Golden Circle Johnson Society: \$2,500-4,999

Baptist Hospital East  
 Bullitt County United Way  
 Churchill Downs  
 Community Foundation of Louisville  
 Empire Education Group, Inc.  
 Ford Motor Company  
 GE Foundation  
 General Mills Foundation  
 The Gordon Foundation Inc.  
 Henry County Fiscal Court Fund  
 HMC Service Company  
 Humana, Inc.  
 Louisville Youth Philanthropy Council  
 Metro Louisville Department of Health & Wellness  
 Northeast Christian Church  
 Oldham County Fiscal Court  
 ORI, Inc.  
 PETCO Foundation  
 Republic Bank  
 R & R Limousine  
 The Slice of Louisville, Inc.

Stites & Harbison  
 The TJX Foundation, Inc. (TJ MAXX)  
 Younger Woman's Club of Louisville  
 Ms. Ann T. Allen  
 Mr. and Mrs. Michael Davis  
 Ms. Joyce Seymour  
 Ms. Jamie Swyers

## Golden Circle of Compassion: \$1,000-2,499

Advanced Electrical Systems, Inc.  
 AFC-KY Service for Peace  
 AMC Inc.  
 Anthem Blue Cross Blue Shield  
 Appriss, Inc.  
 Arthur K. Smith Family Foundation  
 Associated Dental Laboratory of KY, Inc.  
 Bader's Food Mart  
 Bellarmine University – V-Day Campaign  
 Brightside  
 Build-a-Bear Workshop Foundation, Inc.  
 Calvin Presbyterian Church  
 Community Foundation of Southern Indiana  
 Courtenay Foundation  
 Creative Alliance  
 Diane Cornwell Charitable Lead Trust  
 Dine Company  
 Directors Staff Ladies  
 Electrical Workers Union 369  
 Fetter Printing Company  
 Floyd Memorial Hospital & Health Services  
 Frost Brown Todd, Women's Initiative  
 Gannett Foundation, Inc.  
 GE Consumer & Industrial  
 Greater Louisville Association of Realtors, Inc.

Hercules Fund  
 Hussung Mechanical Contractors, Inc.  
 Insuramax  
 Joseph Family Philanthropic Fund  
 Kentucky Foundation for Women  
 Kohl's  
 KPAK Foundation  
 L&N Federal Credit Union  
 Little Brownie Baker's/ Kellogg's Snacks  
 Louisville Youth Philanthropy Council  
 Lye & Linda Graham Charitable Fund  
 M & J Wilkow, LLC  
 Mark's Feed Store  
 Maze for County Attorney  
 Metropolitan Sewer District  
 Mildred V. Horn Foundation  
 Nazareth Literary & Benevolent Institution  
 Nel S. Morrison Charitable Trust  
 Okolona Church of Christ  
 Passport Health Plan  
 Scott County CASA (Communities Against Substance Abuse)  
 Shelby County Community Partnership Grants  
 City of Shelbyville, KY  
 St. Matthew's Episcopal Church  
 St. Paul's Episcopal Church  
 Stoll-Ballard Fund  
 Strothman & Company PSC  
 Louisville Presbyterian Theological Seminary, The Women's Center  
 Thornton's



Tom S. Detwiler Foundation, Inc.  
 Tri Kappa Central Office  
 United Way of Scott County  
 University of Louisville Department of Athletics  
 USA Dance Chapter 2021  
 Wal-Mart Foundation  
 Wendy's – Manna, Inc.  
 Whayne Supply Company  
 Wild and Woolly Video  
 Zoeller Co.  
 Mr. and Mrs. Robert W. Anderson, Jr.



Anonymous  
 Mr. and Mrs. David Boeyink  
 Ms. Toni Clem  
 Ms. Cindy Clifton  
 Mr. Scott Cook  
 Mr. and Mrs. Christopher Dudley  
 Ms. Marjorie Farris  
 Mrs. Jean Frazier  
 Ms. Mary Evelyn Gordinier and Mr. Ted Loebenberg  
 Ms. Sharon Hardy  
 Mr. David A. Jones and Mrs. Betty A. Jones  
 Mr. William G. Kaelin  
 Ms. Eileen Kaplan  
 Mark and Brittany Kleiner  
 Ms. LaChristal Lewis  
 Mr. and Mrs. Ted Nixon  
 Mr. and Mrs. Stephen P. Rivette  
 Mr. and Mrs. Evan Roth  
 Mr. Paul Surowiec  
 Ms. Stacy L. Thurman

Dr. Adewale Troutman and Mrs. Denise Vazquez Troutman  
 Mrs. Carol R. Tway  
 Mrs. Joanne Weis  
 Don and Claudia Wheatly  
 Dr. and Mrs. Richard S. Wolf  
 Fran Yarmuth and Jennifer Johnson  
 Congressman and Mrs. John Yarmuth  
 Margot and Carl Zoeller

## Circle of Courage: \$500-999

Adath Jeshurun Synagogue  
 Ahead Human Resources  
 Bank of America United Way Campaign  
 Caldwell Tanks, Inc.  
 Chilton & Medley  
 Custom Solutions, Inc.  
 Eco-Cell  
 Elizabeth Helm & James R. Voyles Fund  
 Eric Johnson Enterprise, Inc.  
 Grace Lutheran Church  
 Heavenly Silver  
 Humana Custom Contracts  
 Hurstbourne Christian Church  
 Labaugh and Associates, Inc.  
 Louis T. Roth & Co.  
 Louisville Bridge Association  
 Lynn's Paradise Café  
 Market Finders Insurance Company  
 Middletown Christian Church  
 Morehead State-Movement to Empower  
 Noble Metal Processing  
 Payroll Professionals of Kentuckiana  
 S. Pearson and Minx M. Auerbach Foundation  
 ResCare  
 St. Mark's United Church of Christ

St. Stephen United Church of Christ  
 U.S. Voice & Data LLC  
 Valor Traditional Academy  
 Ms. Jill Akerman Jones  
 Mr. Henry Alfod  
 Margaret Barr Kulp  
 Dan and Jayne Becher  
 Carol and Doug Bishop  
 Mr. Cornelius P. Cacho  
 Janet Cantrill  
 Ms. Janet Conti  
 Mrs. Maryhelen Coogole  
 K. Cottner and Steven Ray  
 Ms. Barbara Dickens  
 Ms. Reba L. Doutrick  
 Mrs. Cynthia Embry  
 Ms. Jill L. Force  
 Cory J. Goettsche  
 Mrs. Mary Moss Greenebaum and Mr. John S. Greenebaum, The Sumner Foundation  
 Donna and Greg Haven  
 Mr. and Mrs. Marshall Heuser  
 Lora C. Holman  
 Ms. Lisa Howerton  
 Ms. Jill Jones  
 Mr. Steven Kohn  
 Mr. C. Prewitt Lane, Jr.  
 Carole and Joseph Lash  
 Dr. and Ms. Leonard Leight  
 Dr. Barbara B. Lewis  
 Cantor David Lipp  
 John and Annie Locke  
 Jill and Patrick Mattingly  
 Mr. and Mrs. Daniel D. McGee  
 Carol A. Miller  
 Lori Moore  
 Mr. Lee Payne  
 Ms. Carolyn Peters  
 Ms. Suzanne K. Post  
 Mr. John E. Selent  
 Gregory Smith PSC  
 Dr. William Smock

Ann and Dick Swope  
 S. Upchurch and Greg Jones  
 The Van Fleet Family  
 Pat Vissman  
 Mrs. Libby Voyles  
 Dr. and Mrs. Henry J. Walter, M.D.  
 Connie and Bruce Wright  
 Mrs. Tonya L. York-Dees

## Circle of Hope: \$250-499

Advanced Global Communications, Inc.  
 Beargrass Christian Church  
 Commonwealth Attorney's Office  
 Goldberg and Simpson, PLC  
 Greater Louisville Oral & Maxillofacial Surgery Associates  
 Hibberd, Johnson, Kang & Cook, PLLC  
 Indiana University Southeast School of Nursing  
 Kentucky Alpha Delta Kappa  
 Kentuckiana Healthy Woman Magazine  
 Michael Koch and Associates  
 Middletown & Reutlinger  
 Monumental Life Insurance Co.  
 SalesForce Foundation  
 Severs Family Fund  
 St. Michael Catholic Church  
 Sullivan University College of Pharmacy  
 Summit Energy Services, Inc.  
 United Way of Bartholomew County  
 Mrs. William Alden  
 Ms. Elmer Lucille Allen  
 Anonymous  
 Mr. and Mrs. George R. Bell, III  
 Cara K. Bernosky  
 Katherine Beyke  
 Bruce and Donna Bohn  
 Mr. Todd Bright

Bonnie M. Brown, Attorney  
 Mr. and Mrs. H. Hewett Brown  
 Jane and David Browne  
 Mr. and Mrs. William Bryan  
 Ms. Edythe Burress  
 Mr. and Mrs. Gregory Campbell  
 Ms. Amber Christensen  
 Stephen and Jennifer Church  
 Ms. Patricia Cummings  
 George and Mary Lee Duthie  
 Mr. Bob Eaton  
 Cynthia and James Emery  
 Mr. Alan Engel  
 Mr. Brent Etscorn  
 Ms. Cynthia J. Fanning  
 Dr. Mary Fleming  
 Sister Lucy M. Freibert  
 Jim and Sharon Gorski  
 Tricia J. Gray and Chris Mescia  
 Mr. and Mrs. Michael Heideman  
 Mr. Robert Heinz  
 Alan and Jane Hennessey  
 Chuck and Sherry Henry  
 Dr. Susan Herlin  
 Paris and Donna Hopkins  
 Mrs. Lynn Howard  
 Ms. Eileen Hutchison  
 Ms. Linda R. Ives and Ms. Christa Steinbrenner  
 Mr. and Mrs. G. William Keyes  
 Mr. and Mrs. David Kinny  
 Lew and Kathy Lancaster  
 Mr. Russell Lloyd PSC  
 Ken and Kathleen Loomis  
 Christie Maloney and Dr. Robert Cunningham  
 Ms. Alice Lucille Martin  
 Mr. Martin Mathley  
 Mr. Robert L. McBeath  
 Mr. Robert S. Michael  
 Mr. and Mrs. Bruce Miller  
 Mr. Stan Moore  
 Mr. and Mrs. Sam Moseley  
 Ms. Michelle Naiser

Ms. Diane F. Nguyen  
 Susan and Jim Parobek  
 Larry and Gina Perry  
 Ms. Sheila Poole  
 Mr. and Mrs. John Powers  
 Linda Pursell  
 Carolyn and John Reiser  
 Ms. Leslie Rogers  
 Dr. and Mrs. David Roth  
 Mrs. Betsy Rudd-Bennett  
 John Russ and Cheryl Ungerleider  
 Ms. Robin Schalda  
 Mr. Larry Schneider  
 Sara Seyal  
 Hon. Paula F. Sherlock  
 Sally L. Shown  
 Adam and Michelle Singleton  
 Mike and Louise Slaven  
 Ms. Jacqueline Smith  
 Mrs. Jean Olive Smith  
 Jennifer L. Smith  
 Denise Spratt  
 Mr. Olu A. Stevens  
 Mrs. Mary Stone  
 Mr. James Strange III  
 Ernest and Barbara Stroxtile  
 Dr. and Mrs. Jerry Temes  
 Ms. Stephanie Trautwein  
 Ms. Carolyn Turner  
 Paul and Missy Varga

Dr. and Mrs. Norton G. Waterman  
 Ms. Ann Whitaker  
 Mr. Shawn C. Woosley

**Circle of Care: \$100-249**

AJ Seibert Co., Inc.  
 Alpha Delta Kappa KY Alpha IOTA  
 Altruse International, Inc. of New Albany  
 Anonymous  
 APWU Local 3944  
 Aquatic Access Inc.  
 Aurora Chapter No. 9 O.E.S.  
 Baptist Community Health Services  
 Bethel St. Paul Church Belles  
 Carpet Mart, Inc.  
 Citizens Union Bank  
 Commonwealth Commercial Real Estate  
 Corydon Medical Associates  
 Crosby Middle School  
 Cross-Cultural Cumulative Coding Center Women's Auxiliary  
 Cummings and Bruggman  
 Daughters of Penelope Saturn Chapter 281  
 Delta Sigma Theta Sorority, Inc.- Louisville Alumnae Chapter  
 DeSales High School  
 Diana L. Skaggs & Associates  
 Family Health Centers, Inc.  
 Fernandez, Friedman, Grossman & Kohn  
 Givhan & Spainhour, PSC  
 Greenebaum Doll & McDonald PLLC  
 Hartlage Machine Co. Inc.  
 Hibbs Wealth Management Group  
 Indiana State Employees' Community Campaign

Jefferson County Public Schools High School Principals  
 Jefferson County Public Schools Counselors  
 Jeffersontown Christian Church  
 Johnny D. Bar & Grill  
 Kappa Kappa Kappa-New Albany Associate Chapter  
 Kappa Kappa Kappa-Corydon Associate Chapter  
 Kappa Kappa Kappa, Inc.  
 Lawrence and Associates  
 The Literary Society of St. Catherine of Siena  
 LJH Infinity Realtors Inc.  
 Louisville Metro Housing Authority  
 Mastoras Ventures, LLC  
 Munson Business Interior, Inc.  
 National Association Railway Business Women  
 NetJets Aviation, Inc.  
 Norton & Associates Plumbing, Inc.  
 Norton Medical Associates – Southside  
 OPC Pest Control  
 Open Door Community Fellowship, Inc.  
 Pathways, Inc.  
 Pilot Club of New Albany  
 River City Street Rods  
 Shelby County District Court  
 Shiloh Baptist Church  
 Springdale Presbyterian Church  
 St. Augustine's Church  
 St. Matthews Episcopal Church  
 St. Paul United Methodist-Kaleidoscope Circle  
 St. Peter's Women of the ELCA  
 SuperCuts Kentucky  
 Teamsters Local Union No. 89  
 Trinity Presbyterian Church Women



United Way of Central Maryland  
 United Way of Southeastern Pennsylvania  
 UPS Employees  
 Wachovia Foundation Matching Gift Program  
 William L. Hoge III & Associates  
 Woman to Woman Kentuckiana, Inc.  
 Xi Beta Alpha  
 Dr. Brenton S. Adams and Ms. Donna Edelen  
 Ms. Kim Allen  
 Jeffrey and Tyra Amrein  
 Sara and Charles Anderson  
 Anonymous  
 Col. John Aubrey  
 Mr. and Mrs. Keith Aultman  
 Ms. Kathleen S. Bean and Mr. Robert Kotheimer  
 Ms. Therese A. Bird-McGuire  
 Dr. Susan G. Bornstein  
 Mrs. Susan Brasch  
 Ms. Florence Bright  
 Dr. Sandra Brooks  
 Ms. Judith A. Buchino  
 Ms. Margaret A. Buisson  
 Ms. Barbara Burroughs  
 Darrell and Lisa Cantrell  
 Mr. John G. Carroll  
 Ms. Sondra Carter  
 Ms. Suzette Carty  
 John, Greg and Dayna Catron  
 Ms. Jane Charmoli  
 Jennifer Charron  
 Kathy Clemons  
 Ms. Patricia Cooke

Ms. Cindy Corpe  
 Mrs. Pat Chervenak  
 Sue and Mike Chmielewski  
 Sandy Clemmons  
 Mr. and Mrs. Steven D. Cook  
 Ms. Carol L. Cornette  
 Linda and Fred Cowan  
 Mrs. Laurel Crimm  
 Mrs. Claudia Crump, Ph.D.  
 Ms. Patricia H. Dairf  
 Ms. Julia Daisey  
 Patricia DaRif  
 Betty Jane and Peter Davey  
 Ms. Elona C. Degooyer  
 Mr. Michael Delaney, Delaney Furniture  
 Martha and David Deno  
 John and Christine Desmarais  
 Ms. Lois Dick  
 Christopher and Martha Dolan  
 Lyle and Andrea Donan  
 Mr. William T. Dotson III  
 Mr. James Dougherty  
 Ms. Marcia Duttlinger  
 Ms. Ashley Eifler  
 Ms. Fran Englander  
 Ms. Kittie K. Eubank  
 Mr. Mark Feather  
 Ms. Diane Fischer  
 Mr. Michael Fish  
 Ms. Denise Fletcher  
 Ms. Jennie Fontanetta  
 Ms. Kim Foster  
 Mrs. Leslie J. Fowler  
 Ms. Donna Fox  
 Ms. Carol Foxworthy  
 Ms. Cynthia Franklin  
 Mr. Jeffrey M. Gagnon  
 Lee and Amy Garlove  
 Ms. Patricia C. George  
 Mr. and Mrs. Edwin Godfrey  
 Ms. Helene Gordon Williams



Ms. Mary L. Gorman  
 Rev. Joseph T. Graffis  
 Dr. Fay Greckel  
 Mrs. Marlene M. Grissom  
 Ms. Alice Hall

Edwin and Christine Hall  
 Suzanne and Fred Hammel  
 Patti L. Bell and Jeane M. Hanley  
 Mr. and Mrs. Berry Hayes  
 Ms. Barbara Hedspeth  
 Ms. Fred J. Hender MD and Nancy C. Martin  
 Ms. Meredith Kyle Hettinger  
 Ms. Darlene Hilpp  
 Mrs. Ilma M. Hirsch  
 Dr. and Mrs. Jonathan E. Hodes  
 Mrs. Lisa Hollander  
 Ms. Hollie Hopkins  
 Ms. Louise Horine  
 Mr. Barry R. Horowitz  
 Ms. Lisa J. Houston  
 Ms. Virginia Hudgens  
 Mr. and Mrs. David C. Hussung  
 Ms. Linda M. Jackson  
 Ms. Becky Jaenichen  
 Angela and Richard James  
 Brian and Cindy James  
 Mrs. Jodie L. James  
 Ms. Elizabeth Jent  
 Ms. Margaret Jewell  
 Charles and Kathy Johnson  
 Mr. Wesley Johnson  
 Ms. Cathy Jones  
 Ms. Shirley Jones

Ms. Marjorie Kaiser  
 Ms. Margaret E. Keane  
 Dr. Virginia T. Keeney  
 Ms. Teresa Kiersznowski  
 Mr. Richard Kingrey and Ms. Carolyn Kinser  
 Mrs. Patricia Kinnaird  
 Ms. Carolyn Kinser  
 Dr. and Mrs. Donald Kmetz  
 Ms. Toni D. Kohlmeyer  
 Ms. Rachael Kurzer Givens  
 Ronald and Deborah Kushmaul  
 Ms. Mary Ann Lambert  
 Ms. Nancy Lampton  
 Mr. and Mrs. Ethan Lasser  
 Mr. and Mrs. William C. Lattis, Jr.  
 Annette S. Lieberman  
 Ms. Meredith Loeb  
 Dr. Thomas Loeb MD  
 Lucy and Charles Long  
 Ms. Judy Lowe  
 Ms. Crit Luallen  
 Mr. James Lucado  
 Gaynell and Ronald Luttrell  
 Mr. and Mrs. Brian Lykins  
 Mr. and Mrs. Charles Lynch  
 Michael and Leigh Lynch  
 Mr. and Mrs. Louis Lyvers  
 Mr. Matthew Maier  
 Ms. Nancy Martin  
 Ms. Hilary Mattingly  
 Mr. Michael D. Mattingly  
 Dr. Edward N. Maxwell  
 Ms. Judith McCandless  
 Mr. and Mrs. Dennis McCarten  
 Vicki and Philip McCombs  
 Ms. Suzanne McDonald  
 Ms. Suzanne McHugh  
 Mr. and Mrs. John V. McReynolds  
 Ms. Jennie L. Meador  
 Neil Mellen and Maven Martin

Kip and Allison Meyer  
 Ms. Lillian C. Milanof  
 Mr. Dennis M. Miller  
 Mrs. Lizzie G. Miller  
 Pat Miller  
 Wanda Miller  
 Mr. Bradley Mohr  
 Mr. and Mrs. Will Monarch  
 Ron and Betty Monroe  
 Ms. Michelle Moran  
 Ms. Bettye J. Morgan  
 Ms. Irene Mosvold  
 Mr. Raymond J. Naber Jr.  
 Ms. Julie Namkin and Mr. Greg Singlust  
 Mr. and Mrs. John E. Nolan  
 Ms. Judith A. Olliges  
 Mr. Stuart Pass  
 Mr. Charles C. Peters Jr.  
 Ms. Joy Peterson  
 Jeremy and Kristin Pickerell  
 Kelly and Joe Pyzocha  
 Jeri and Jim Quillman  
 Mike Quiram  
 Mr. and Mrs. Gordon L. Ragan  
 Ms. Elaine Rahm  
 Ms. Gay M. Rapley-Adelstern  
 Ms. Laura Ratcliffe  
 Ms. Teresa Ray  
 Ms. Maddie C. Reno  
 Mr. and Mrs. Alberto Reyes  
 Anita and John Richards  
 Jim and Marsha Robards  
 Mr. and Mrs. Mark L. Roberson  
 Mr. and Mrs. Buford Robertson  
 Ms. Michele D. Rowe  
 Ms. Ellen R. Rudd  
 Ms. Rebecca Rue  
 Mrs. Kaelin M. Rybak  
 Mrs. Felice C. Sachs  
 Eddie and Michelle Sanders  
 Mr. Marc Satterwhite and Ms. Rebecca Jemian

Mr. Russell Saunders  
 Susan and Robert Scherer  
 Ms. Karen Schneider  
 Ms. Helen Schrock  
 Terry Sebastian  
 Ms. Louise Seiler  
 Ms. Robin Sewell  
 Ms. Mary N. Shands  
 Mrs. Ellen H. Shapira  
 Mr. and Mrs. Perry Shear  
 Mrs. Ellen B. Shelby  
 Mr. and Mrs. Bill Shrewsbury  
 Ms. Debbie Sibbitt  
 Jorecia and Charles Singleton  
 Mr. Mike H. Slaton  
 Ms. Mary Slayton Farmer  
 Mr. Robert and Mrs. Elizabeth Smedley  
 LeRoyce Smiley  
 Anne and Gary Smith  
 Mrs. Ellen and Mr. Richard Smith  
 Ms. Sandy Smithers  
 Mr. and Mrs. Wayne Snider  
 Mary Ann Sodrel  
 William and Sharon Spath  
 Ms. Sue Speed  
 Richard and Wendy Splan  
 Robert and Mary Ann Stenger  
 William C. Templeton III and Janice S. Davis  
 Mr. Joseph Thompson  
 Ms. Alice Tiano  
 Mrs. Carol S. Tittel  
 Ms. Margaret Trahey  
 Ms. Linda B. Trautwein  
 Deborah and Raymond Triplett  
 Ms. Sara B. Troutman  
 Mr. Richard A. Vance

Ms. Roanne H. Victor, Jr.  
 Mr. David A. Vogel  
 Ms. Sherri Wade  
 Ms. Letitia L. Walter  
 Don and Cynthia Ward  
 Mr. Louis Waterman  
 Mrs. Marsha Weinstein  
 Ms. Louise B. Welch  
 Sheila and Patrick Welsh  
 David and Sharon Whitely  
 Ms. Lenore O. Wilinkson  
 Marcia Wilmet  
 Beverly and James Wilson  
 Jim and Colleen Wilson  
 Dr. and Mrs. Thomas P. Wolf  
 Mr. and Mrs. Jonathan D. Wolff  
 Mr. and Mrs. Anthony Yeager  
 Ms. Pamela J. Young  
 Dr. Janice W. Yusk, M.D.  
 Ms. Carey Zanetti  
 Ms. Susan G. Zepeda  
 Ms. Cynthia M. Zinner  
 Ms. Cathy S. Zion  
 Mr. Robert C. Zoller





THE  
CENTER  
FOR  
WOMEN  
AND  
FAMILIES

P.O. Box 2048  
Louisville, Kentucky 40201-2048

NON-PROFIT ORG  
US POSTAGE  
**PAID**  
LOUISVILLE KY  
PERMIT NO. 202

## The Center for Women and Families

(877) 803-7577 Toll Free [www.thecenteronline.org](http://www.thecenteronline.org)



### KENTUCKY

#### Joan E. Thomas, M.D. Campus

Business Line: (502) 581-7200

24 Hour Crisis Line: (502) 581-7222

#### West Louisville Campus

(502) 775-6408

#### Shelbyville Office

(502) 633-7800  
(Serving Shelby, Henry, Oldham  
Trimble and Spencer counties)

#### Bullitt County Office

(502) 538-0212  
(Serving Bullitt and Spencer counties)

### INDIANA

#### Southern Indiana Campus

Business Line/

24 Hour Crisis Line: (812) 944-6743

#### Corydon Office

(812) 734-0280

#### Scottsburg Office

(812) 752-7996

