

tions

about services
; please call any of
our website.

Violence Crisis Line

ne

ie

3-7577

Line • 24-Hours

eronline.org

omen and Families will
services to all qualified
ss of race, color, national
rientation, religion, age,

following: under contract with the Cabinet
Domestic Violence Association with state
ssembly, Indiana Family & Social Services
na, Jefferson Co., the City of Louisville,
ted Ways, Victims of Crime Act, Crawford
; Indiana State Dept. of Health, Indiana
Health & Health Services Block Grant,
rsity Cooperative Extension, Younger
; foundations and donations.

You have the right to be free from violence!

Information about
domestic violence
for the lesbian, gay,
bisexual, transsexual
and transgender
community

Information from



HELPLINE
CENTER
FOR
WOMEN
AND
FAMILIES

Are you in an abusive relationship?

Has your partner

Does your partner:

- threaten to “out” you to your employer, family or others?
- control what you do, whom you see or talk to or where you go?
- take your important documents or money, make you ask for or refuse to give you money?
- slap, pinch, shove, hit, kick, punch or restrain you against your will?
- intimidate you with guns, knives or other weapons?
- act like the abuse is no big deal, it’s your fault or even deny doing it?
- tell you you’re a bad parent, threaten to take away or hurt the children?
- threaten to kill you?



Ho
ab
so
th
Ba
co
ph
str

I’l

**Men can’t batter or
Women don’t hurt**
People of any gender
orientation can batt

But I’ve never hit y
Abuse and battering
physical violence – t
non-consensual cont

**I promise. We’ll ge
stay with me.**

Abusers may be (or
Couples counseling
stop battering and c
dangerous for you.

**Battering, also called domestic
violence and dating violence, happens
in lesbian, gay, bisexual, transsexual,
transgender and straight
communities. It crosses all social,
ethnic, racial and economic lines.**

**An individual’s siz
or personality do
whether she or he
be a ba**

abuse?

is a pattern of person tries to beliefs or conduct of other person close de physical, d or economic abuse.



options

ick, beaten or ld call 911. If the omplaint of abuse by m of domestic of immigration w the same ith heterosexual uations, this can rest of the batterer. ce hours after the .

ncy: **911**
ty police: **574-7111**
nty police: **574-2111**
ice: **317-232-8241**

Protective orders (DVO and EPO)

These are court documents to provide protection from future acts of domestic violence.

You can file an emergency protective order if any of the following have happened to you:

- physical injury or assault
- sexual abuse or assault
- threats of physical injury or assault

You must be an ex-spouse, spouse, or an unmarried couple who is currently or formerly living together, or who has a child in common.

The laws in KY and IN do not explicitly exclude or include protection for gays, lesbians or transgendered people. If you encounter people who are not responsive based on sexual orientation, ask The Center for help.

You do not need to be a citizen or legal resident to get a protective order.

If you are an undocumented victim of domestic violence, you may be eligible to receive a three-year visa, with a possibility of a green card after that time. Advocates at The Center can help you with this process.

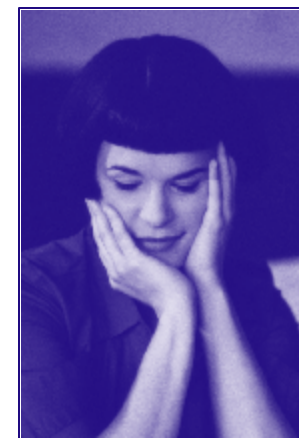
Domestic violence occurs within same-sex relationships statistical frequency as in heterosexual relation

- the prevalence of domestic violence among Gay and Lesbian couples is ap 25 - 33% (Barnes, "It's Just a Quarrel", American Bar Association Journal, 1
- each year, between 50,000 and 100,000 Lesbian women and as many as 50 battered (Murphy, Queer Justice: Equal Protection for Victims of Same-Sex, 30 Val. U.L. Rev. 335 (1995).
- many battered Gays or Lesbians fight back to *defend* themselves - it is a battering is mutual (Murphy, Queer Justice: Equal Protection for Victims of Violence, 30 Val. U.L. Rev 335 (1995).

The Center for Women and Families can help...

Services offered include:

- 24 hour crisis line
- Emergency shelter for female victims
- We will find safe options for male victims
- Transitional Housing is available for people leaving the shelter
- Hospital Advocacy
- Legal Advocacy, including immigration
- Safety planning
- Counseling & therapy
- Casework
- Children's services
- Victims' support groups
- The Center serves 14 counties including Jefferson, Shelby, Henry, Oldham, Trimble, Bullitt and Spencer in Kentucky and Clark, Floyd, Harrison, Scott, Washington, Crawford and Orange counties in Indiana.



How you can help victim of domesti

- You probably know survivor.
- Break the silence : violence in sa ships.
 - Share the brochure with victim of dom
 - Support a victim of dom
 - Believe the judge their cl know they ca
 - Don't criti survivor ever the batterer i never easy to when that person friend know that s/he makes, s/he c
- Get involved. Vol for Women and F