



THE
CENTER
FOR
WOMEN
AND
FAMILIES



*Helping Victims Become
Survivors for Almost 100 Years*

OUR *History*

The Center for Women and Families has been helping victims of domestic violence, sexual violence and economic hardship since 1912. Originally part of the YWCA, today it is a private nonprofit organization serving 14 Kentuckiana counties. The Center has established a national reputation for providing high-quality services and innovative programming to help victims become survivors.



One in three women will be the victim of domestic violence. Every two minutes someone is sexually assaulted in the United States.

- 1912** Opens small one room office at downtown Louisville YWCA
- 1975** Begins rape crisis and creative employment programming
- 1977** Opens the first domestic violence shelter in Kentucky
- 1983** Establishes services in New Albany, Indiana
- 1988** Moves to a new more secured downtown Louisville campus on West Breckinridge Street
- 1989** Incorporates as a private nonprofit organization; opens office in Shelbyville, Kentucky
- 1993** Opens office in Scottsburg, Indiana
- 1998** Begins providing transitional housing at West Louisville Campus
- 1999** Dedicates new Southern Indiana shelter
- 2000** Launches endowment and capital campaign to fund expansion
- 2005** Dedicates the Joan E. Thomas, M.D. Campus on Second Street in downtown Louisville
- 2007** Opens region's only community-based Sexual Assault Nurse Examiner (SANE) Clinic

OUR *Facilities*

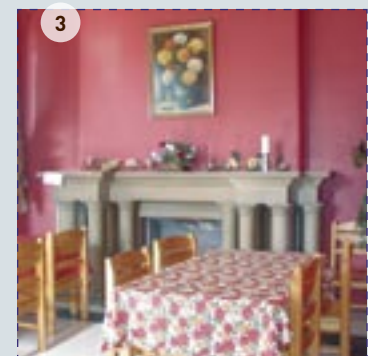
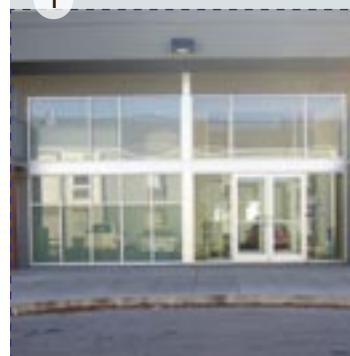
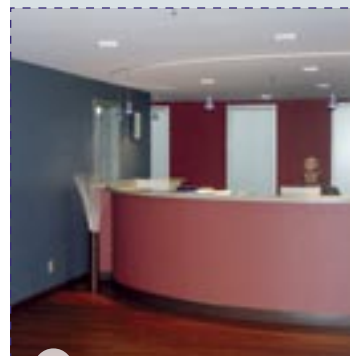
The Center operates more than six regional office locations, three of which provide emergency shelter, transitional housing and long term housing options.

The Center's **Joan E. Thomas, M.D. Campus (1)** provides residential and nonresidential services for survivors of domestic violence, sexual violence and economic hardship. It offers rooms for special-needs victims and age appropriate play spaces for children. This campus also houses The Center's Economic Success services, Kentucky crisis line and regional administration offices.

Located in Floyd County, The Center's **Southern Indiana Campus (2)** has provided emergency shelter, transitional housing and nonresidential services for victims of domestic and sexual violence since 1999. It also operates the Indiana crisis line. Office locations in Harrison, Crawford and Scott County offer outreach support.

The Center's **West Louisville Campus (3)**, based in a Classical Revival style building, provides safe, stable housing and support services to nine families working to establish violence-free homes of their own.

The Center also provides supportive services at convenient regional locations for victims of domestic and sexual violence in **Bullitt, Henry, Shelby, Oldham, Spencer and Trimble counties.**



RESIDENTIAL SERVICES

Find the Strength Within

Many victims of domestic violence flee with nothing but the clothes on their backs and a few precious possessions. Safe emergency shelter is a critical first step to a new beginning.

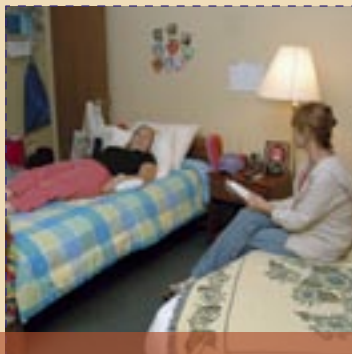
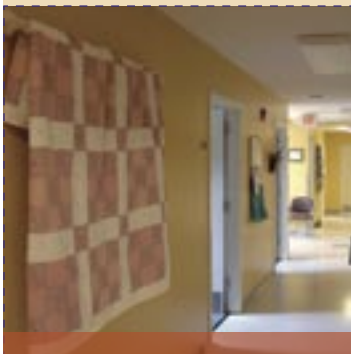


The Center's residential facilities provide safe, temporary haven for victims and their children. During the first few days, we provide comfortable beds, warm meals, clean clothes, crisis counseling and safety planning. Soon, our Family Advocates begin to help victims plan their unique journey of healing.

In many instances, survivors face a lack of safe long-term housing options. This is why The Center offers transitional housing or long-term housing counseling options at all of its residential facilities.

Other residential services include:

- › Hospital advocacy
- › Transportation assistance
- › Legal advocacy
- › Safety planning
- › Individual counseling
- › Daily support groups
- › Information and referrals
- › Economic Success services
- › Case management
- › Medical advocacy
- › Therapy & art therapy



(left) The Center's Southern Indiana Campus and (right) Joan E. Thomas, M.D. Campus.

NONRESIDENTIAL SERVICES

More Than a Shelter

When people think about The Center for Women and Families, they usually think about our shelter. But most of our services are provided "nonresidentially." That is, many of our clients never live at one of our housing facilities.

Photo by Bill Sheets Photography



In some instances, victims of domestic and sexual violence do not need emergency shelter. Supportive family and friends are providing a place for them to live. Other times it can still be very unsafe for victims to leave their batterers.

In other situations, our therapists see survivors weeks, months or even years after the abuse.



Healing may not be so much about getting better, as about letting go of everything that isn't you—all of the expectations, all of the beliefs—and becoming who you are. *Rachel Naomi Remen*

Nonresidential services are at the heart of The Center's mission to end domestic violence, sexual violence and economic hardship. They include:

- › Hospital advocacy
- › Legal advocacy
- › Safety planning
- › Individual counseling
- › Weekly support groups
- › Family & friends support
- › Therapy & art therapy
- › Sexual Assault Nurse Examiner (SANE) Clinic
- › Case management
- › Medical advocacy
- › Economic Success services

Economic Success



Photo by Bill Sheets Photography

It takes as much energy to wish as it does to plan.

Eleanor Roosevelt

Many survivors of domestic and sexual violence have trouble finding jobs and housing because of poor credit, rental and employment histories caused by years of physical and financial abuse. Since 1975, The Center has been helping survivors identify their strengths, anticipate barriers and develop strategies for economic self-sufficiency.

Our Economic Success Counselors work one-on-one with survivors to help them manage debts, increase assets, create budgets and set savings goals. Self-sufficiency is possible, with a little help and a lot of perseverance.



Our Economic Success services include:

- › Budgeting
- › Job search support
- › Individual Development Account (IDA) programs
- › Economic Literacy Outreach Project
- › Economic Success workshops
- › Economic Success resource rooms

The Center's Economic Success services are open to all qualifying participants. Many clients have never been the victim of domestic or sexual violence.

Staff & Volunteers

More than 80 dedicated employees and almost 200 volunteers ensure The Center's services are provided every hour of the day, every day of the year throughout our 14-county service area.

The Center's counselors, advocates, therapists and educators receive certification from the Kentucky Domestic Violence Association and Kentucky Association of Sexual Assault Programs training meeting requirements of the Kentucky Association of Sexual Assault Programs. Our volunteers undergo a rigorous 40-hour training to prepare them to help.



Fund development, accounting, communications, human resources, facilities, technology and other professionals provide management of regional administrative functions. A governing Board of Directors comprised of regional community leaders contributes time and talent to oversight of the mission, purposes and activities.



The Center is an equal opportunity employer. Its policies, procedures, programs and services are administered to ensure neither employees, applicants nor clients are subjected to discrimination on the basis of race, color, national origin, sex, religion, age, sexual preference, gender identity, familial status, pregnancy or disability.

Additional Services

24 HOUR CRISIS LINE 1-877-803-7577

The Center receives more than 15,000 calls to our toll-free crisis line each year. Victims and their families call 24 hours a day, every day of the year with questions and concerns.



LOUISVILLE SANE CLINIC

Provided in partnership with University Hospital and Louisville SANE/SART.

The Louisville Sexual Assault Nurse Examiner (SANE) Clinic is our region's only community-based clinic of its kind. It offers immediate, confidential services in the heart of the Joan E. Thomas, M.D. Campus. All services are provided by a Registered Nurse who has completed specialized forensic training in the care and treatment of male and female sexual assault victims.



LEGAL ADVOCACY SERVICES

The Center's Legal Advocates work directly with regional law enforcement to provide resources to victims of domestic and sexual violence. Often, these advocates accompany victims to Emergency Protective Order, criminal

and other court hearings to support them through the process.

COMMUNITY EDUCATION AND TRAINING

Each year, The Center provides community education and training to more than 20,000 people. These programs build awareness about our services, dispel common myths, increase public knowledge, enhance professional skills and provide a framework for prevention. Doctors, nurses, police officers, faith-leaders, human resource teams, students of all ages and many more have participated.

Call the location nearest you to request details.

OUR Young Residents



At any given time, almost half of our residential clients are children.

Research suggests children exposed to domestic, sexual or emotional violence are at increased risk for substance abuse, school delinquency and other challenges. But studies also remind us that children are resilient. They can overcome with safety, nurturing and encouragement provided here at The Center for Women and Families.

Our children's services include:

- › Art activities
- › Age appropriate play spaces
- › Teen Room
- › Safety planning
- › Playgrounds
- › Boy Scout troop
- › Healthy meals
- › Field trips
- › Tutoring
- › Counseling

Photo by Bill Sheets Photography



SUPPORT *The Center*



How wonderful it is that nobody need wait a single moment before starting to improve the world.

Anne Frank

MAKE A DIFFERENCE

There are so many ways to support our mission.

You are part of the solution.

- › Make an online donation: www.thecenteronline.org
- › Coordinate an Adopt-a-Room drive.
- › Deliver gently used items in the name of The Center to your nearest Goodwill location.
- › Attend Celebration of Service and Survival, our largest annual fundraising event.
- › Remember The Center when making plans for life income gifts and annuities.

For more information about ways you can help, contact the Director of Development at 502-581-7207.

RAISE YOUR HAND

Whether volunteers are making hospital runs, monitoring court proceedings, tutoring school children or organizing our storage closets, they are at the heart of The Center's mission and services.



Contact our Volunteer Manager at 502-581-7268 for more information about becoming a volunteer.

VISIT THE CENTER

Call The Center's President/CEO to schedule a visit to one of our regional locations: 502-581-7211.

Mission

The Center for Women and Families engages individuals and community in the elimination of domestic violence, sexual violence and economic hardship through service, education and advocacy.



Locations

For more information about services offered at The Center for Women and Families, please call any of our locations or visit www.thecenteronline.org.

Toll-free 24 Hour Crisis Line:

1-877-803-7577

KENTUCKY

Joan E. Thomas, M.D. Campus

Open 24 Hours
P.O. Box 2048
Louisville, KY 40201-2048
(502) 581-7200 Business
(502) 581-7222 24 Hour

West Louisville Campus

4303 West Broadway
Louisville, KY 40211-3122
(502) 775-6408

Shelby County Area Services

(502) 633-7800

Kentucky Outreach Services

(502) 538-0212

INDIANA

Southern Indiana Campus

Open 24 Hours
P.O. Box 248
Sellersburg, IN 47172-0248
(812) 944-6743 24 Hours

Corydon Office

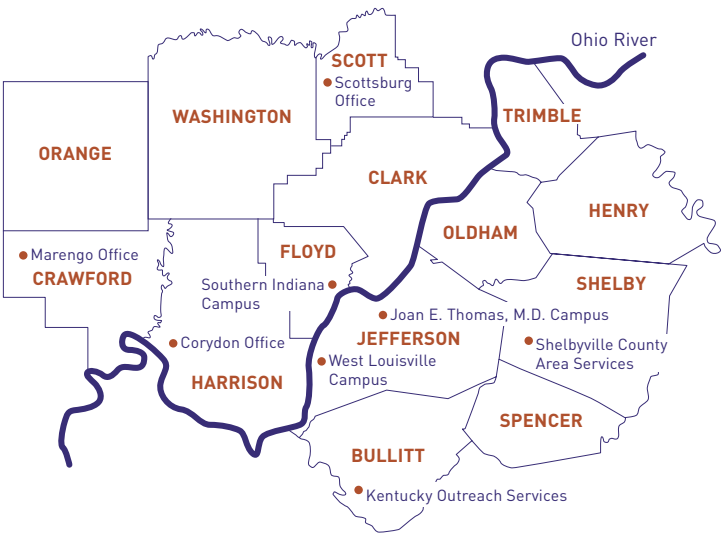
405 N. Capital Avenue
Suite 102
Corydon, IN 47112-1552
(812) 734-0280

Marengo Office

6941 East State Road 64
Marengo, IN 47140-8912
(812) 365-2338

Scottsburg Office

1092 West Community Way
Scottsburg, IN 47170-7768
(812) 752-7996



Our programs are funded in part by the following:

Kentucky Domestic Violence Association, Kentucky Association of Sexual Assault Programs, Kentucky Housing Corporation, Metro Louisville, Metro United Way, United Way of Scott County, Inc., U.S. Department of Housing and Urban Development, and many more federal, regional and local sources. Please review our most recent annual report at www.thecenteronline.org for a complete list of our funders.

