

The Center for Women and Families serves 7 Indiana counties.



THE CENTER FOR WOMEN AND FAMILIES



TOLL FREE (877) 803-7577

INDIANA (812) 944-6743

24 HOUR CRISIS LINE

The Center for Women and Families serves 7 Indiana counties.



THE CENTER FOR WOMEN AND FAMILIES



TOLL FREE (877) 803-7577

INDIANA (812) 944-6743

24 HOUR CRISIS LINE

The Center for Women and Families serves 7 Indiana counties.



THE CENTER FOR WOMEN AND FAMILIES



TOLL FREE (877) 803-7577

INDIANA (812) 944-6743

24 HOUR CRISIS LINE

The Center for Women and Families serves 7 Indiana counties.



THE CENTER FOR WOMEN AND FAMILIES



TOLL FREE (877) 803-7577

INDIANA (812) 944-6743

24 HOUR CRISIS LINE

THERE'S NO EXCUSE FOR ABUSE.

THERE'S NO EXCUSE FOR ABUSE.

THERE'S NO EXCUSE FOR ABUSE.

THERE'S NO EXCUSE FOR ABUSE.



TRUST YOUR FEELINGS
If you feel uncomfortable,
Leave as quickly as possible.

BE INDEPENDENT
Make your own decisions and
choose your own friends.

BE CLEAR AND FIRM
You have the right to say no.

TRUST YOUR FEELINGS
If you feel uncomfortable,
Leave as quickly as possible.

BE INDEPENDENT
Make your own decisions and
choose your own friends.

BE CLEAR AND FIRM
You have the right to say no.

TRUST YOUR FEELINGS
If you feel uncomfortable,
Leave as quickly as possible.

BE INDEPENDENT
Make your own decisions and
choose your own friends.

BE CLEAR AND FIRM
You have the right to say no.

TRUST YOUR FEELINGS
If you feel uncomfortable,
Leave as quickly as possible.

BE INDEPENDENT
Make your own decisions and
choose your own friends.

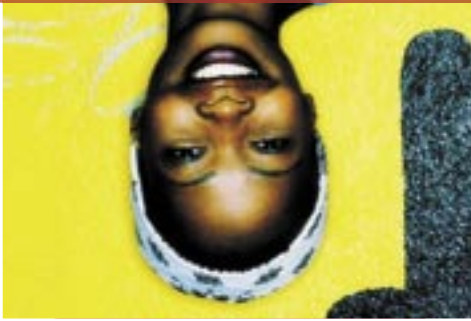
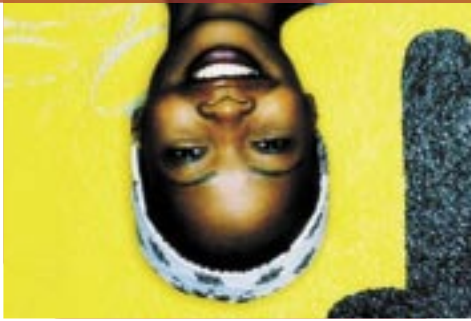
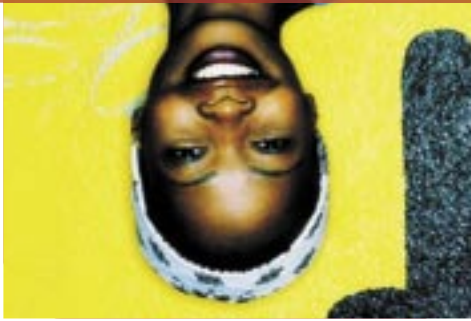
BE CLEAR AND FIRM
You have the right to say no.

DATE SAFE

DATE SAFE

DATE SAFE

DATE SAFE



DATING VIOLENCE

DATING VIOLENCE

DATING VIOLENCE

DATING VIOLENCE



Dating violence means physical, emotional/psychological or sexual abuse in a dating relationship.

Dating violence means physical, emotional/psychological or sexual abuse in a dating relationship.

Dating violence means physical, emotional/psychological or sexual abuse in a dating relationship.

Dating violence means physical, emotional/psychological or sexual abuse in a dating relationship.

"Violence" is slapping, hitting, pushing or shoving. It's also threats, ridicule, name calling and controlling what you do, where you go and who you see.

"Violence" is slapping, hitting, pushing or shoving. It's also threats, ridicule, name calling and controlling what you do, where you go and who you see.

"Violence" is slapping, hitting, pushing or shoving. It's also threats, ridicule, name calling and controlling what you do, where you go and who you see.

"Violence" is slapping, hitting, pushing or shoving. It's also threats, ridicule, name calling and controlling what you do, where you go and who you see.

While physical violence is more immediately damaging, emotional abuse may be more long term and devastating.

While physical violence is more immediately damaging, emotional abuse may be more long term and devastating.

While physical violence is more immediately damaging, emotional abuse may be more long term and devastating.

While physical violence is more immediately damaging, emotional abuse may be more long term and devastating.

WARNING SIGNS

- * Jealousy and control issues
- * Possessiveness
- * Verbal abuse
- * Sexual demands
- * Violent temper
- * Abusive home life
- * Rapidly changing mood
- * Excessive alcohol or drug use

WARNING SIGNS

- * Jealousy and control issues
- * Possessiveness
- * Verbal abuse
- * Sexual demands
- * Violent temper
- * Abusive home life
- * Rapidly changing mood
- * Excessive alcohol or drug use

WARNING SIGNS

- * Jealousy and control issues
- * Possessiveness
- * Verbal abuse
- * Sexual demands
- * Violent temper
- * Abusive home life
- * Rapidly changing mood
- * Excessive alcohol or drug use

WARNING SIGNS

- * Jealousy and control issues
- * Possessiveness
- * Verbal abuse
- * Sexual demands
- * Violent temper
- * Abusive home life
- * Rapidly changing mood
- * Excessive alcohol or drug use

WHAT TO DO

1. Get away from the violent person
2. Tell someone. Reach out for help from family, friends, teachers, police, or someone you trust.
3. Call The Center for Women and Families
4. Remember, the violence will not go away on its own.

WHAT TO DO

1. Get away from the violent person
2. Tell someone. Reach out for help from family, friends, teachers, police, or someone you trust.
3. Call The Center for Women and Families
4. Remember, the violence will not go away on its own.

WHAT TO DO

1. Get away from the violent person
2. Tell someone. Reach out for help from family, friends, teachers, police, or someone you trust.
3. Call The Center for Women and Families
4. Remember, the violence will not go away on its own.

WHAT TO DO

1. Get away from the violent person
2. Tell someone. Reach out for help from family, friends, teachers, police, or someone you trust.
3. Call The Center for Women and Families
4. Remember, the violence will not go away on its own.

HELP IS AVAILABLE.

HELP IS AVAILABLE.

HELP IS AVAILABLE.

HELP IS AVAILABLE.